

Product datasheet for **CF506880**

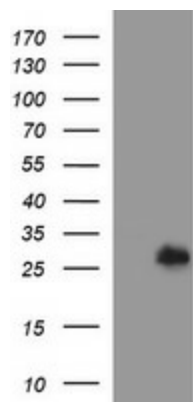
DTD1 Mouse Monoclonal Antibody [Clone ID: OT11E1]

Product data:

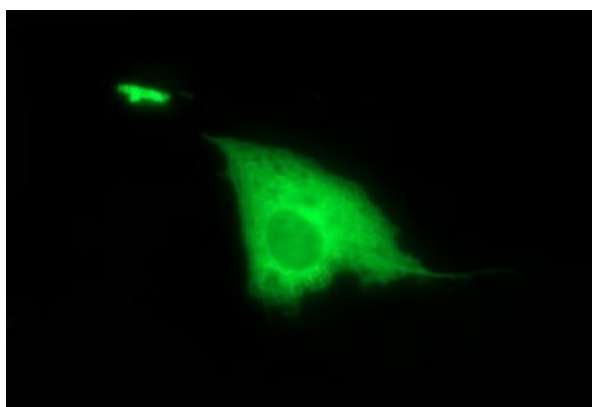
Product Type:	Primary Antibodies
Clone Name:	OT11E1
Applications:	IF, WB
Recommended Dilution:	WB 1:4000, IF 1:100
Reactivity:	Human, Mouse, Rat
Host:	Mouse
Isotype:	IgG1
Clonality:	Monoclonal
Immunogen:	Full length human recombinant protein of human DTD1(NP_543010) produced in HEK293T cell.
Formulation:	Lyophilized powder (original buffer 1X PBS, pH 7.3, 8% trehalose)
Reconstitution Method:	For reconstitution, we recommend adding 100uL distilled water to a final antibody concentration of about 1 mg/mL. To use this carrier-free antibody for conjugation experiment, we strongly recommend performing another round of desalting process. (OriGene recommends Zeba Spin Desalting Columns, 7KMWCO from Thermo Scientific)
Purification:	Purified from mouse ascites fluids or tissue culture supernatant by affinity chromatography (protein A/G)
Conjugation:	Unconjugated
Storage:	Store at -20°C as received.
Stability:	Stable for 12 months from date of receipt.
Predicted Protein Size:	23.2 kDa
Gene Name:	D-aminoacyl-tRNA deacylase 1
Database Link:	NP_543010 Entrez Gene 66044 Mouse Entrez Gene 362227 Rat Entrez Gene 92675 Human Q8TEA8
Synonyms:	C20orf88; DUE-B; DUEB; HARS2; pqn-68



[View online »](#)

Product images:

HEK293T cells were transfected with the pCMV6-ENTRY control (Cat# [PS100001], Left lane) or pCMV6-ENTRY DTD1 (Cat# [RC207233], Right lane) cDNA for 48 hrs and lysed. Equivalent amounts of cell lysates (5 ug per lane) were separated by SDS-PAGE and immunoblotted with anti-DTD1 (Cat# [TA506880]). Positive lysates [LY409024] (100ug) and [LC409024] (20ug) can be purchased separately from OriGene.



Anti-DTD1 mouse monoclonal antibody ([TA506880]) immunofluorescent staining of COS7 cells transiently transfected by pCMV6-ENTRY DTD1 ([RC207233]).