

Product datasheet for **CF506859**

IL6R Mouse Monoclonal Antibody [Clone ID: OTI2F4]

Product data:

Product Type:	Primary Antibodies
Clone Name:	OTI2F4
Applications:	IF, IHC, WB
Recommend Dilution:	WB 1:4000, IHC 1:150, IF 1:100
Reactivity:	Human
Host:	Mouse
Isotype:	IgG1
Clonality:	Monoclonal
Immunogen:	Full length human recombinant protein of human IL6R(NP_000556) produced in HEK293T cell.
Formulation:	PBS (pH7.3), 8% Trehalose
Reconstitution Method:	Reconstitute with PBS (pH7.3). To use this carrier-free antibody for conjugation experiment, we strongly recommend you to perform another round of desalting process. (OriGene recommends Zeba Spin Desalting Columns, 7KMWCO from Thermo Scientific)
Purification:	Purified from cell culture supernatant by affinity chromatography
Predicted Protein Size:	49.8 kDa
Gene Name:	Homo sapiens interleukin 6 receptor (IL6R), transcript variant 1, mRNA.
Database Link:	NP_000556 Entrez Gene 3570 Human
Background:	This gene encodes a subunit of the interleukin 6 (IL6) receptor complex. Interleukin 6 is a potent pleiotropic cytokine that regulates cell growth and differentiation and plays an important role in the immune response. The IL6 receptor is a protein complex consisting of this protein and interleukin 6 signal transducer (IL6ST/GP130/IL6-beta), a receptor subunit also shared by many other cytokines. Dysregulated production of IL6 and this receptor are implicated in the pathogenesis of many diseases, such as multiple myeloma, autoimmune diseases and prostate cancer. Alternatively spliced transcript variants encoding distinct isoforms have been reported. A pseudogene of this gene is found on chromosome 9. [provided by RefSeq, May 2011]
Synonyms:	CD126; gp80; IL-6R-1; IL-6RA; IL6Q; IL6RA; IL6RQ

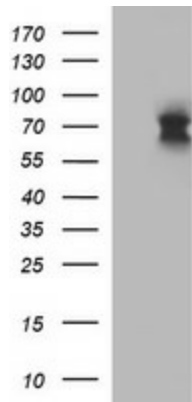


[View online »](#)

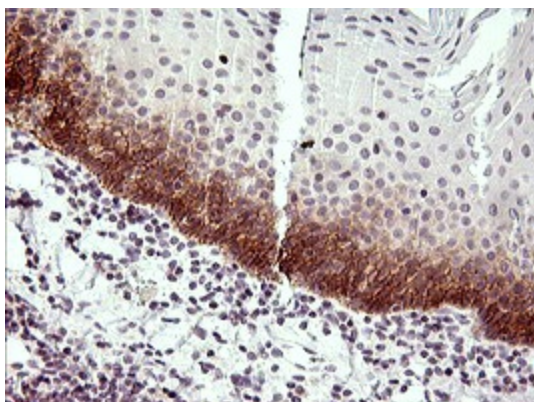
Protein Families: Druggable Genome, ES Cell Differentiation/IPS, Transmembrane

Protein Pathways: Cytokine-cytokine receptor interaction, Hematopoietic cell lineage, Jak-STAT signaling pathway

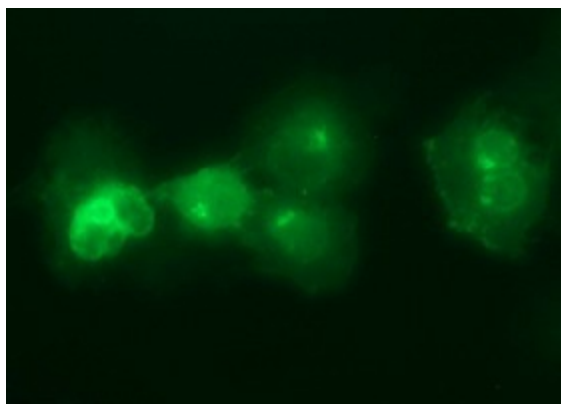
Product images:



HEK293T cells were transfected with the pCMV6-ENTRY control (Left lane) or pCMV6-ENTRY IL6R (RC221874, Right lane) cDNA for 48 hrs and lysed. Equivalent amounts of cell lysates (5 ug per lane) were separated by SDS-PAGE and immunoblotted with anti-IL6R. Positive lysates LY400192 (100ug) and LC400192 (20ug) can be purchased separately from OriGene.



Immunohistochemical staining of paraffin-embedded Human lymph node tissue within the normal limits using anti-IL6R mouse monoclonal antibody. (Heat-induced epitope retrieval by 10mM citric buffer, pH6.0, 120°C for 3min, TA506859)



Anti-IL6R mouse monoclonal antibody (TA506859) immunofluorescent staining of COS7 cells transiently transfected by pCMV6-ENTRY IL6R (RC221874).