

## Product datasheet for **CF506850**

### IL1 alpha (IL1A) Mouse Monoclonal Antibody [Clone ID: OTI2F11]

#### Product data:

Product Type:	Primary Antibodies
Clone Name:	OTI2F11
Applications:	IF, IHC, WB
Recommended Dilution:	WB 1:2000, IHC 1:150, IF 1:100
Reactivity:	Human
Host:	Mouse
Isotype:	IgG1
Clonality:	Monoclonal
Immunogen:	Full length human recombinant protein of human IL1A(NP_000566) produced in HEK293T cell.
Formulation:	Lyophilized powder (original buffer 1X PBS, pH 7.3, 8% trehalose)
Reconstitution Method:	For reconstitution, we recommend adding 100uL distilled water to a final antibody concentration of about 1 mg/mL. To use this carrier-free antibody for conjugation experiment, we strongly recommend performing another round of desalting process. (OriGene recommends Zeba Spin Desalting Columns, 7KMWCO from Thermo Scientific)
Purification:	Purified from mouse ascites fluids or tissue culture supernatant by affinity chromatography (protein A/G)
Conjugation:	Unconjugated
Storage:	Store at -20°C as received.
Stability:	Stable for 12 months from date of receipt.
Predicted Protein Size:	30.4 kDa
Gene Name:	interleukin 1 alpha
Database Link:	<a href="#">NP_000566</a> <a href="#">Entrez Gene 3552 Human P01583</a>



[View online »](#)

**Background:**

The protein encoded by this gene is a member of the interleukin 1 cytokine family. This cytokine is a pleiotropic cytokine involved in various immune responses, inflammatory processes, and hematopoiesis. This cytokine is produced by monocytes and macrophages as a proprotein, which is proteolytically processed and released in response to cell injury, and thus induces apoptosis. This gene and eight other interleukin 1 family genes form a cytokine gene cluster on chromosome 2. It has been suggested that the polymorphism of these genes is associated with rheumatoid arthritis and Alzheimer's disease. [provided by RefSeq, Jul 2008]

**Synonyms:**

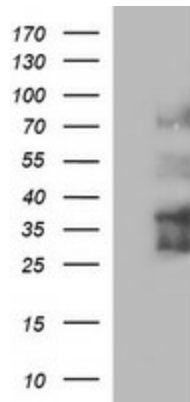
IL-1A; IL1; IL1-ALPHA; IL1F1

**Protein Families:**

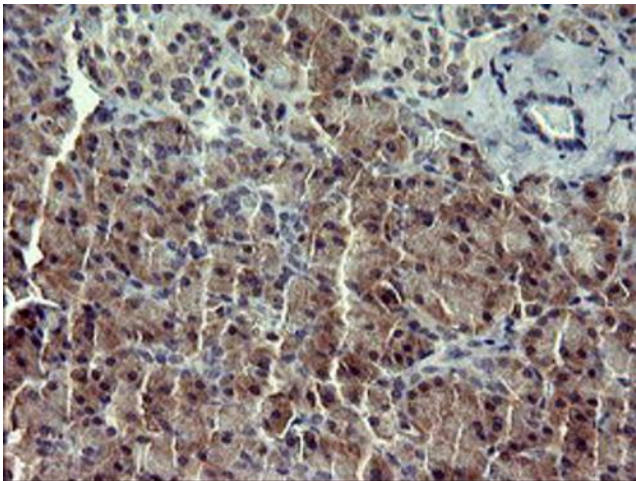
Druggable Genome, Secreted Protein

**Protein Pathways:**

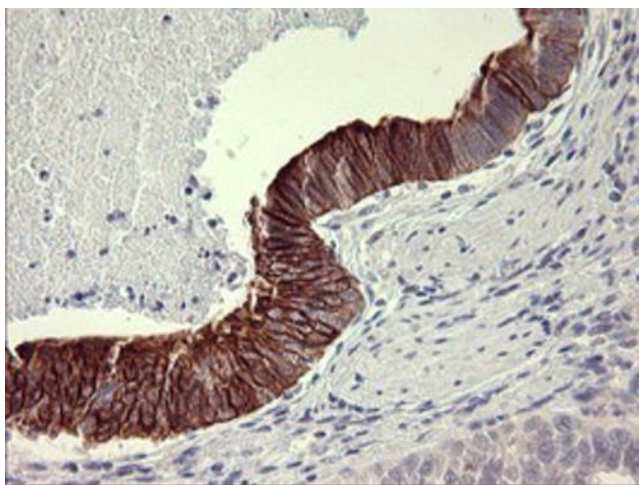
Apoptosis, Cytokine-cytokine receptor interaction, Graft-versus-host disease, Hematopoietic cell lineage, MAPK signaling pathway, Prion diseases, Type I diabetes mellitus

**Product images:**

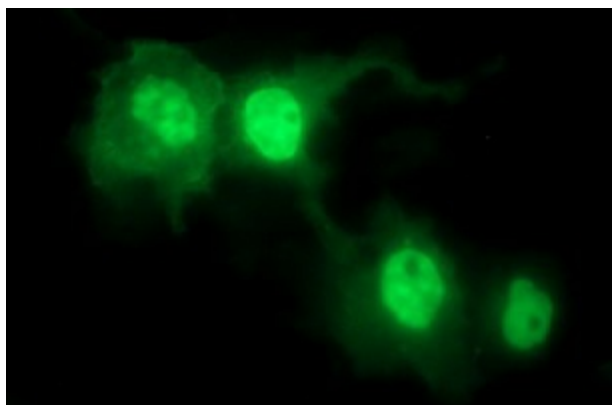
HEK293T cells lysate (5ug, left lane) and full length human recombinant protein of human IL1A (NP\_000566) produced in HEK293T cell (5ug, right lane) were separated by SDS-PAGE and immunoblotted with anti-IL1A.



Immunohistochemical staining of paraffin-embedded Human pancreas tissue within the normal limits using anti-IL1A mouse monoclonal antibody. (Heat-induced epitope retrieval by 10mM citric buffer, pH6.0, 120°C for 3min, [TA506850])



Immunohistochemical staining of paraffin-embedded Carcinoma of Human pancreas tissue using anti-IL1A mouse monoclonal antibody. (Heat-induced epitope retrieval by 10mM citric buffer, pH6.0, 120°C for 3min, [TA506850])



Anti-IL1A mouse monoclonal antibody ([TA506850]) immunofluorescent staining of COS7 cells transiently transfected by pCMV6-ENTRY IL1A ([RC202084]).