

## Product datasheet for **CF506838**

### GRF2 (RAPGEF1) Mouse Monoclonal Antibody [Clone ID: OTI2C3]

#### Product data:

Product Type:	Primary Antibodies
Clone Name:	OTI2C3
Applications:	IHC, WB
Recommended Dilution:	WB 1:400~4000, IHC 1:150
Reactivity:	Human, Dog, Rat, Monkey, Mouse
Host:	Mouse
Isotype:	IgG1
Clonality:	Monoclonal
Immunogen:	Full length human recombinant protein of human RAPGEF1(NP_941372) produced in HEK293T cell.
Formulation:	Lyophilized powder (original buffer 1X PBS, pH 7.3, 8% trehalose)
Reconstitution Method:	For reconstitution, we recommend adding 100uL distilled water to a final antibody concentration of about 1 mg/mL. To use this carrier-free antibody for conjugation experiment, we strongly recommend performing another round of desalting process. (OriGene recommends Zeba Spin Desalting Columns, 7KMWCO from Thermo Scientific)
Purification:	Purified from mouse ascites fluids or tissue culture supernatant by affinity chromatography (protein A/G)
Conjugation:	Unconjugated
Storage:	Store at -20°C as received.
Stability:	Stable for 12 months from date of receipt.
Predicted Protein Size:	122.6 kDa
Gene Name:	Rap guanine nucleotide exchange factor 1
Database Link:	<a href="#">NP_941372</a> <a href="#">Entrez Gene 107746</a> <a href="#">MouseEntrez Gene 63881</a> <a href="#">RatEntrez Gene 491286</a> <a href="#">DogEntrez Gene 715272</a> <a href="#">MonkeyEntrez Gene 2889</a> <a href="#">Human Q13905</a>
Synonyms:	C3G; GRF2

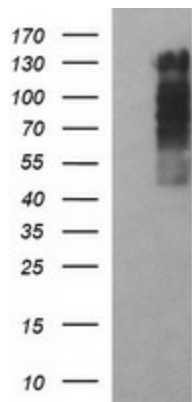


[View online »](#)

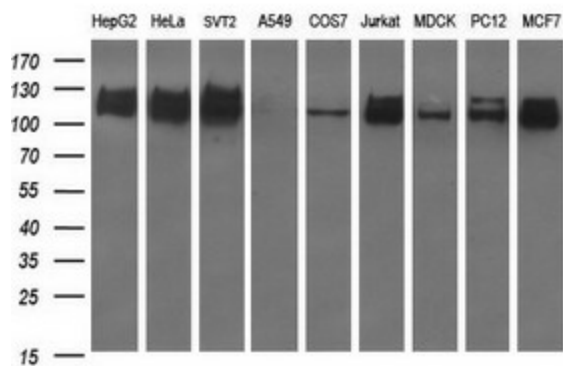
**Protein Families:** Druggable Genome

**Protein Pathways:** Focal adhesion, Insulin signaling pathway, Neurotrophin signaling pathway, Renal cell carcinoma

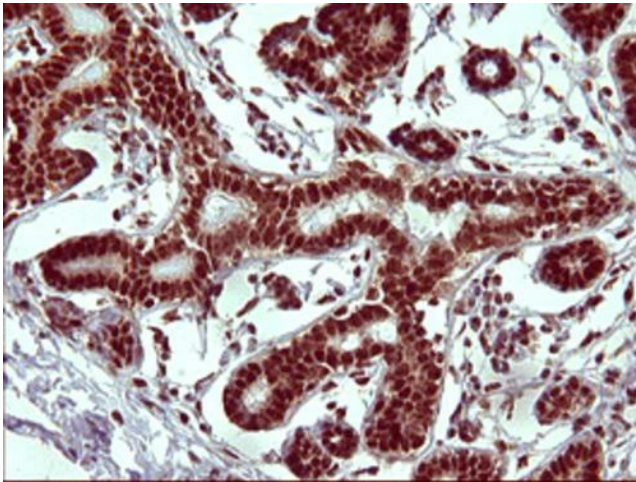
**Product images:**



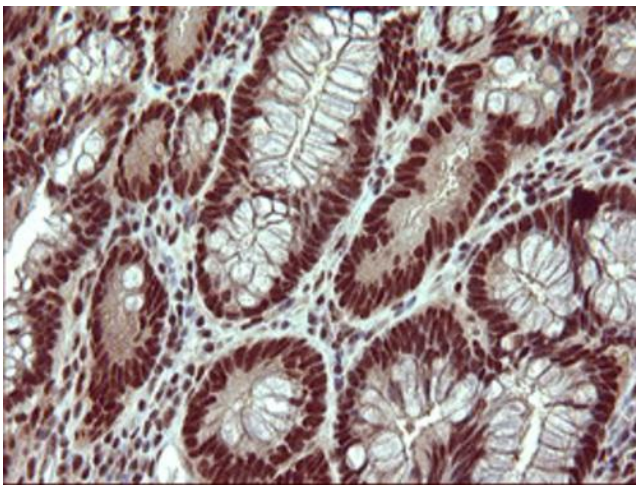
HEK293T cells were transfected with the pCMV6-ENTRY control (Left lane) or pCMV6-ENTRY RAPGEF1 ([RC208092], Right lane) cDNA for 48 hrs and lysed. Equivalent amounts of cell lysates (5 ug per lane) were separated by SDS-PAGE and immunoblotted with anti-RAPGEF1. Positive lysates [LY404802] (100ug) and [LC404802] (20ug) can be purchased separately from OriGene.



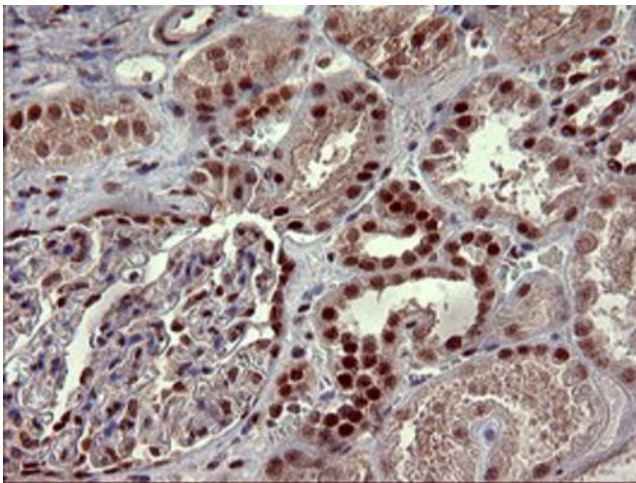
Western blot analysis of extracts (35ug) from 9 different cell lines by using anti-RAPGEF1 monoclonal antibody (HepG2: human; HeLa: human; SVT2: mouse; A549: human; COS7: monkey; Jurkat: human; MDCK: canine; PC12: rat; MCF7: human).



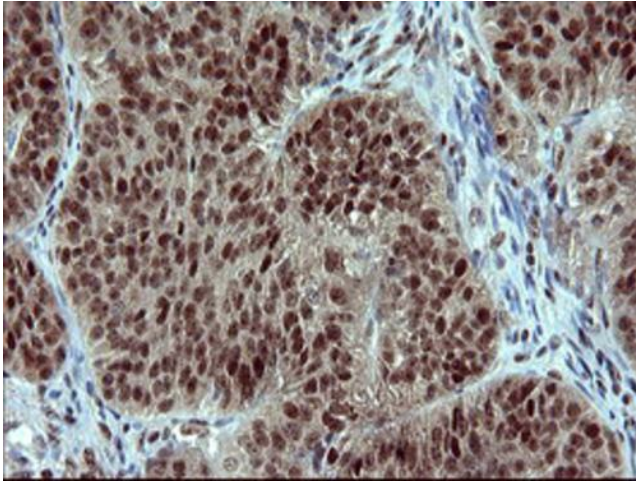
Immunohistochemical staining of paraffin-embedded Human breast tissue within the normal limits using anti-RAPGEF1 mouse monoclonal antibody. (Heat-induced epitope retrieval by 10mM citric buffer, pH6.0, 120°C for 3min, [TA506838])



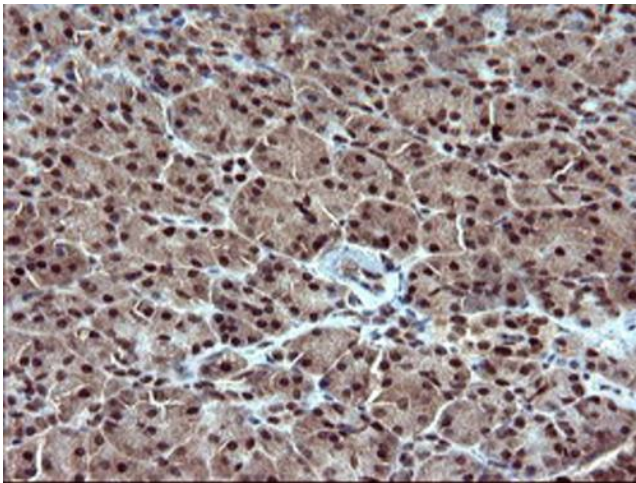
Immunohistochemical staining of paraffin-embedded Adenocarcinoma of Human colon tissue using anti-RAPGEF1 mouse monoclonal antibody. (Heat-induced epitope retrieval by 10mM citric buffer, pH6.0, 120°C for 3min, [TA506838])



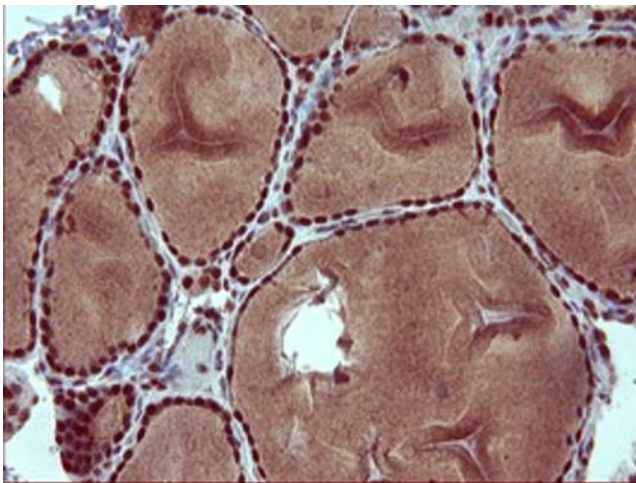
Immunohistochemical staining of paraffin-embedded Human Kidney tissue within the normal limits using anti-RAPGEF1 mouse monoclonal antibody. (Heat-induced epitope retrieval by 10mM citric buffer, pH6.0, 120°C for 3min, [TA506838])



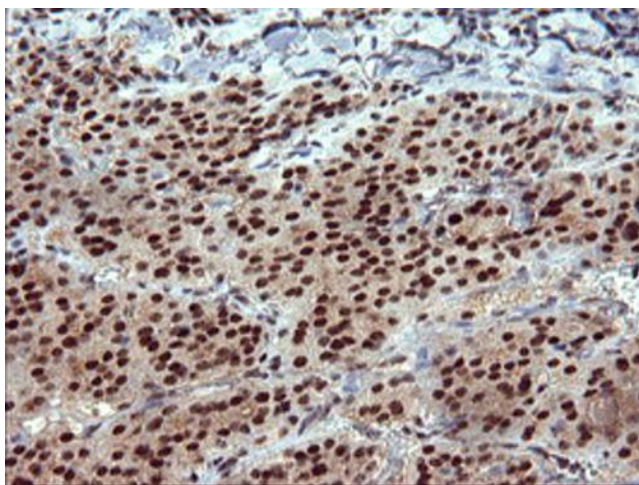
Immunohistochemical staining of paraffin-embedded Adenocarcinoma of Human ovary tissue using anti-RAPGEF1 mouse monoclonal antibody. (Heat-induced epitope retrieval by 10mM citric buffer, pH6.0, 120°C for 3min, [TA506838])



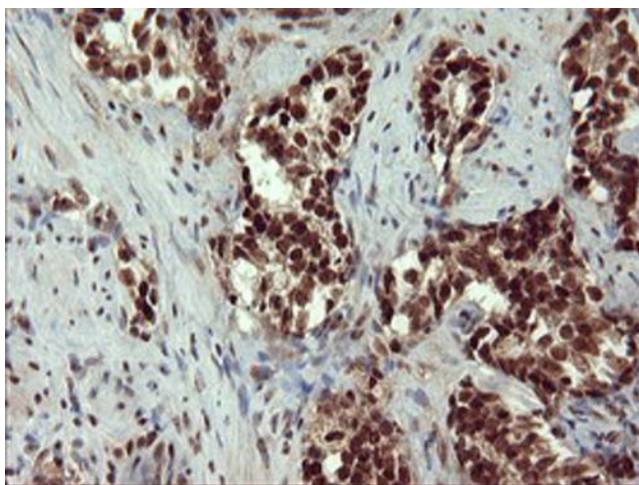
Immunohistochemical staining of paraffin-embedded Human pancreas tissue within the normal limits using anti-RAPGEF1 mouse monoclonal antibody. (Heat-induced epitope retrieval by 10mM citric buffer, pH6.0, 120°C for 3min, [TA506838])



Immunohistochemical staining of paraffin-embedded Human thyroid tissue within the normal limits using anti-RAPGEF1 mouse monoclonal antibody. (Heat-induced epitope retrieval by 10mM citric buffer, pH6.0, 120°C for 3min, [TA506838])



Immunohistochemical staining of paraffin-embedded Carcinoma of Human thyroid tissue using anti-RAPGEF1 mouse monoclonal antibody. (Heat-induced epitope retrieval by 10mM citric buffer, pH6.0, 120°C for 3min, [TA506838])



Immunohistochemical staining of paraffin-embedded Carcinoma of Human prostate tissue using anti-RAPGEF1 mouse monoclonal antibody. (Heat-induced epitope retrieval by 10mM citric buffer, pH6.0, 120°C for 3min, [TA506838])