

Product datasheet for **CF506805**

TUBB1 Mouse Monoclonal Antibody [Clone ID: OTI4A3]

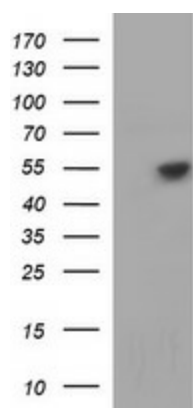
Product data:

Product Type:	Primary Antibodies
Clone Name:	OTI4A3
Applications:	IF, IHC, WB
Recommended Dilution:	WB 1:200~2000, IHC 1:150, IF 1:100
Reactivity:	Human, Dog, Rat, Monkey, Mouse
Host:	Mouse
Isotype:	IgG2a
Clonality:	Monoclonal
Immunogen:	Full length human recombinant protein of human TUBB1(NP_110400) produced in HEK293T cell.
Formulation:	Lyophilized powder (original buffer 1X PBS, pH 7.3, 8% trehalose)
Reconstitution Method:	For reconstitution, we recommend adding 100uL distilled water to a final antibody concentration of about 1 mg/mL. To use this carrier-free antibody for conjugation experiment, we strongly recommend performing another round of desalting process. (OriGene recommends Zeba Spin Desalting Columns, 7KMWCO from Thermo Scientific)
Purification:	Purified from mouse ascites fluids or tissue culture supernatant by affinity chromatography (protein A/G)
Conjugation:	Unconjugated
Storage:	Store at -20°C as received.
Stability:	Stable for 12 months from date of receipt.
Predicted Protein Size:	50.1 kDa
Gene Name:	tubulin beta 1 class VI
Database Link:	NP_110400 Entrez Gene 545486 MouseEntrez Gene 679312 RatEntrez Gene 485950 DogEntrez Gene 693889 MonkeyEntrez Gene 81027 Human Q9H4B7
Synonyms:	beta 1; beta tubulin 1; class VI; dj543j19.4; OTTHUMP00000031411; tubulin

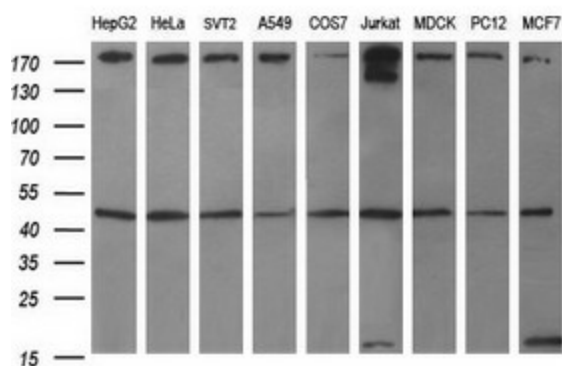


[View online »](#)

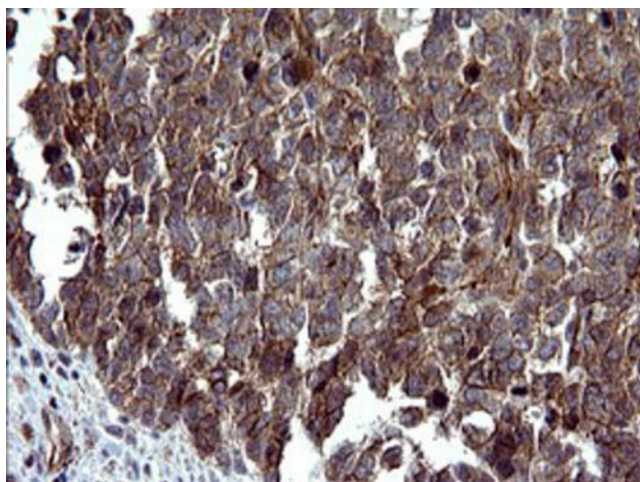
Protein Families: Druggable Genome
 Protein Pathways: Gap junction, Pathogenic Escherichia coli infection

Product images:


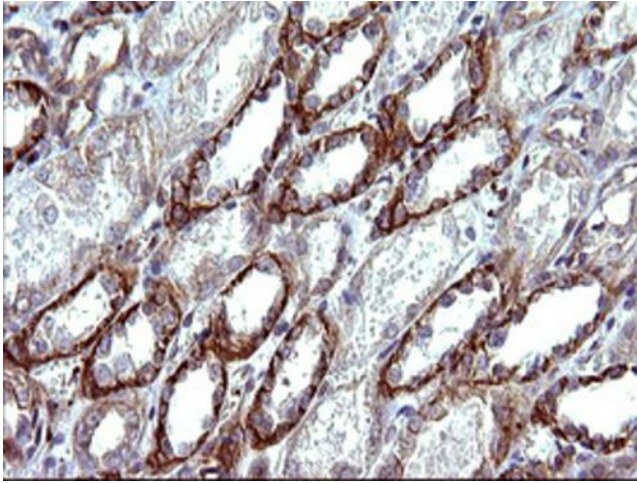
HEK293T cells were transfected with the pCMV6-ENTRY control (Cat# [PS100001], Left lane) or pCMV6-ENTRY TUBB1 (Cat# [RC207459], Right lane) cDNA for 48 hrs and lysed. Equivalent amounts of cell lysates (5 ug per lane) were separated by SDS-PAGE and immunoblotted with anti-TUBB1 (Cat# [TA506805]). Positive lysates [LY410723] (100ug) and [LC410723] (20ug) can be purchased separately from OriGene.



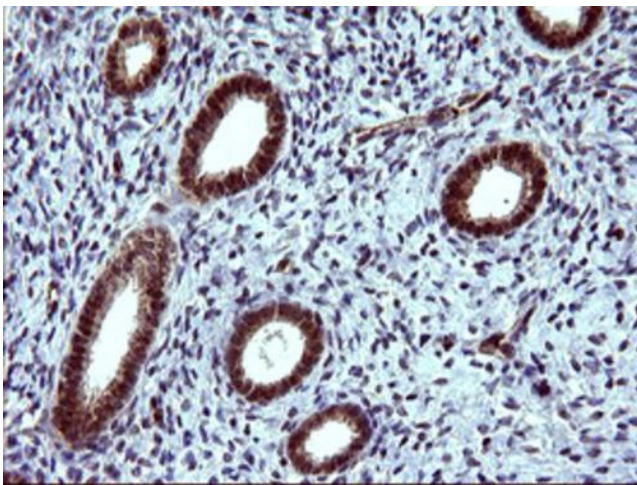
Western blot analysis of extracts (35ug) from 9 different cell lines by using anti-TUBB1 monoclonal antibody (HepG2: human; HeLa: human; SVT2: mouse; A549: human; COS7: monkey; Jurkat: human; MDCK: canine; PC12: rat; MCF7: human).



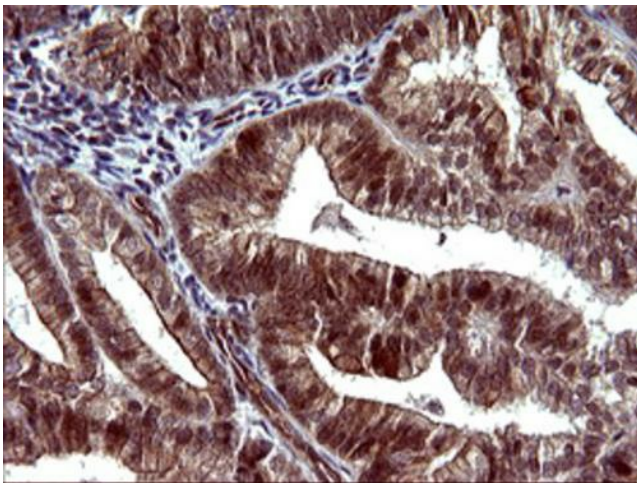
Immunohistochemical staining of paraffin-embedded Adenocarcinoma of Human colon tissue using anti-TUBB1 mouse monoclonal antibody. (Heat-induced epitope retrieval by 10mM citric buffer, pH6.0, 120°C for 3min, [TA506805])



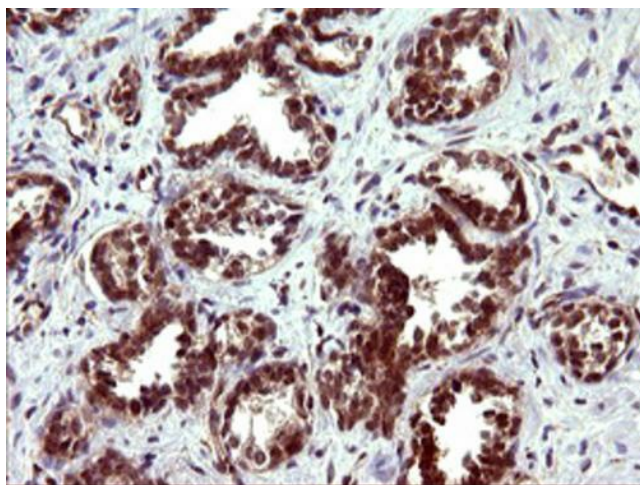
Immunohistochemical staining of paraffin-embedded Human Kidney tissue within the normal limits using anti-TUBB1 mouse monoclonal antibody. (Heat-induced epitope retrieval by 10mM citric buffer, pH6.0, 120°C for 3min, [TA506805])



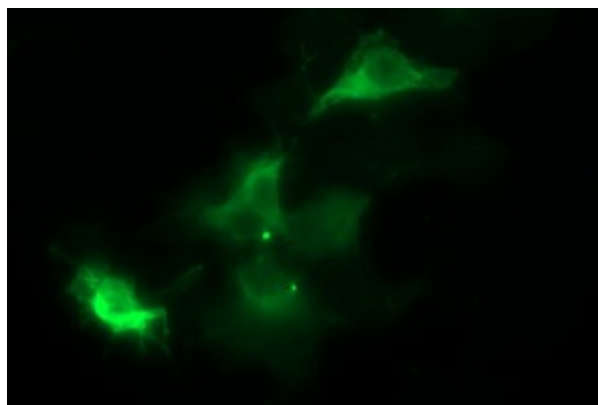
Immunohistochemical staining of paraffin-embedded Human endometrium tissue within the normal limits using anti-TUBB1 mouse monoclonal antibody. (Heat-induced epitope retrieval by 10mM citric buffer, pH6.0, 120°C for 3min, [TA506805])



Immunohistochemical staining of paraffin-embedded Adenocarcinoma of Human endometrium tissue using anti-TUBB1 mouse monoclonal antibody. (Heat-induced epitope retrieval by 10mM citric buffer, pH6.0, 120°C for 3min, [TA506805])



Immunohistochemical staining of paraffin-embedded Carcinoma of Human prostate tissue using anti-TUBB1 mouse monoclonal antibody. (Heat-induced epitope retrieval by 10mM citric buffer, pH6.0, 120°C for 3min, [TA506805])



Anti-TUBB1 mouse monoclonal antibody ([TA506805]) immunofluorescent staining of COS7 cells transiently transfected by pCMV6-ENTRY TUBB1 ([RC207459]).