

## Product datasheet for **CF506797**

### Oct4 (POU5F1) Mouse Monoclonal Antibody [Clone ID: OTI2B6]

#### Product data:

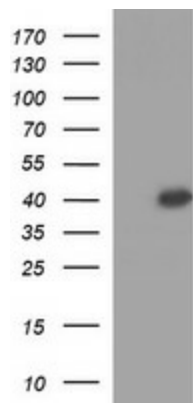
Product Type:	Primary Antibodies
Clone Name:	OTI2B6
Applications:	WB
Recommended Dilution:	WB 1:4000
Reactivity:	Human
Host:	Mouse
Isotype:	IgG2b
Clonality:	Monoclonal
Immunogen:	Full length human recombinant protein of human POU5F1(NP_002692) produced in HEK293T cell.
Formulation:	Lyophilized powder (original buffer 1X PBS, pH 7.3, 8% trehalose)
Reconstitution Method:	For reconstitution, we recommend adding 100uL distilled water to a final antibody concentration of about 1 mg/mL. To use this carrier-free antibody for conjugation experiment, we strongly recommend performing another round of desalting process. (OriGene recommends Zeba Spin Desalting Columns, 7KMWCO from Thermo Scientific)
Purification:	Purified from mouse ascites fluids or tissue culture supernatant by affinity chromatography (protein A/G)
Conjugation:	Unconjugated
Storage:	Store at -20°C as received.
Stability:	Stable for 12 months from date of receipt.
Predicted Protein Size:	38.4 kDa
Gene Name:	Homo sapiens POU class 5 homeobox 1 (POU5F1), transcript variant 1, mRNA.
Database Link:	<a href="#">NP_002692</a> <a href="#">Entrez Gene 5460 Human</a> <a href="#">Q01860</a>
Synonyms:	Oct-3; Oct-4; OCT3; OCT4; OTF-3; OTF3; OTF4



[View online »](#)

**Protein Families:** Adult stem cells, Cancer stem cells, Embryonic stem cells, Induced pluripotent stem cells, Stem cell - Pluripotency, Transcription Factors

**Product images:**



HEK293T cells were transfected with the pCMV6-ENTRY control (Left lane) or pCMV6-ENTRY POU5F1 ([RC211998], Right lane) cDNA for 48 hrs and lysed. Equivalent amounts of cell lysates (5 ug per lane) were separated by SDS-PAGE and immunoblotted with anti-POU5F1. Positive lysates [LY400950] (100ug) and [LC400950] (20ug) can be purchased separately from OriGene.