

Product datasheet for **CF506741**

CD44 Mouse Monoclonal Antibody [Clone ID: OTI5B6]

Product data:

Product Type:	Primary Antibodies
Clone Name:	OTI5B6
Applications:	WB
Recommended Dilution:	WB 1:4000, IF 1:100
Reactivity:	Human
Host:	Mouse
Isotype:	IgG2a
Clonality:	Monoclonal
Immunogen:	Full length human recombinant protein of human CD44(NP_000601) produced in HEK293T cell.
Formulation:	Lyophilized powder (original buffer 1X PBS, pH 7.3, 8% trehalose)
Reconstitution Method:	For reconstitution, we recommend adding 100uL distilled water to a final antibody concentration of about 1 mg/mL. To use this carrier-free antibody for conjugation experiment, we strongly recommend performing another round of desalting process. (OriGene recommends Zeba Spin Desalting Columns, 7KMWCO from Thermo Scientific)
Purification:	Purified from mouse ascites fluids or tissue culture supernatant by affinity chromatography (protein A/G)
Conjugation:	Unconjugated
Storage:	Store at -20°C as received.
Stability:	Stable for 12 months from date of receipt.
Predicted Protein Size:	79.2 kDa
Gene Name:	CD44 molecule (Indian blood group)
Database Link:	NP_000601 Entrez Gene 960 Human P16070
Synonyms:	CDW44; CSPG8; ECMR-III; HCELL; HUTCH-I; IN; LHR; MC56; MDU2; MDU3; MIC4; Pgp1

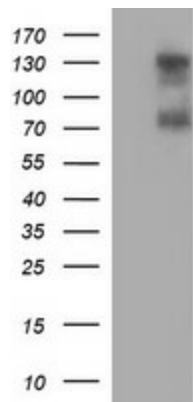


[View online »](#)

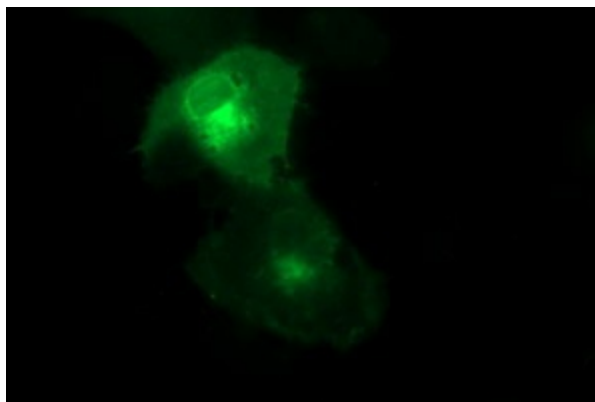
Protein Families: Adult stem cells, Cancer stem cells, Druggable Genome, Embryonic stem cells, ES Cell Differentiation/IPS, Stem cell relevant signaling - DSL/Notch pathway, Transmembrane

Protein Pathways: ECM-receptor interaction, Hematopoietic cell lineage

Product images:



HEK293T cells were transfected with the pCMV6-ENTRY control (Left lane) or pCMV6-ENTRY CD44 ([RC221771], Right lane) cDNA for 48 hrs and lysed. Equivalent amounts of cell lysates (5 ug per lane) were separated by SDS-PAGE and immunoblotted with anti-CD44. Positive lysates [LY400203] (100ug) and [LC400203] (20ug) can be purchased separately from OriGene.



Anti-CD44 mouse monoclonal antibody ([TA506741]) immunofluorescent staining of COS7 cells transiently transfected by pCMV6-ENTRY CD44 ([RC221771]).