

## Product datasheet for **CF506684**

### TUBB2B Mouse Monoclonal Antibody [Clone ID: OTI8F12]

#### Product data:

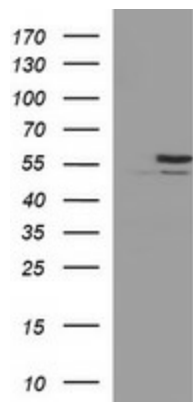
Product Type:	Primary Antibodies
Clone Name:	OTI8F12
Applications:	IF, IHC, WB
Recommended Dilution:	WB 1:4000, IF 1:100, IHC: 1:150
Reactivity:	Human, Mouse, Rat
Host:	Mouse
Isotype:	IgG2a
Clonality:	Monoclonal
Immunogen:	Full length human recombinant protein of human TUBB2B(NP_821080) produced in HEK293T cell.
Formulation:	Lyophilized powder (original buffer 1X PBS, pH 7.3, 8% trehalose)
Reconstitution Method:	For reconstitution, we recommend adding 100uL distilled water to a final antibody concentration of about 1 mg/mL. To use this carrier-free antibody for conjugation experiment, we strongly recommend performing another round of desalting process. (OriGene recommends Zeba Spin Desalting Columns, 7KMWCO from Thermo Scientific)
Purification:	Purified from mouse ascites fluids or tissue culture supernatant by affinity chromatography (protein A/G)
Conjugation:	Unconjugated
Storage:	Store at -20°C as received.
Stability:	Stable for 12 months from date of receipt.
Predicted Protein Size:	49.8 kDa
Gene Name:	tubulin beta 2B class IIb
Database Link:	<a href="#">NP_821080</a> <a href="#">Entrez Gene 73710 Mouse</a> <a href="#">Entrez Gene 291081 Rat</a> <a href="#">Entrez Gene 347733 Human</a> <a href="#">Q9BVA1</a>
Synonyms:	bA506K6.1; PMGYSA
Protein Families:	Druggable Genome



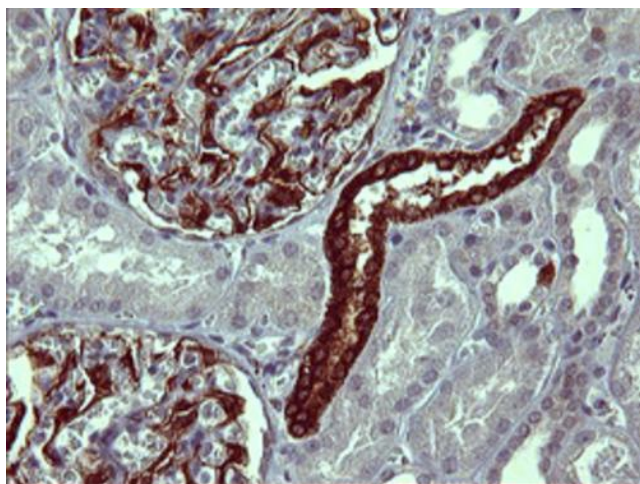
[View online >](#)

Protein Pathways: Gap junction, Pathogenic Escherichia coli infection

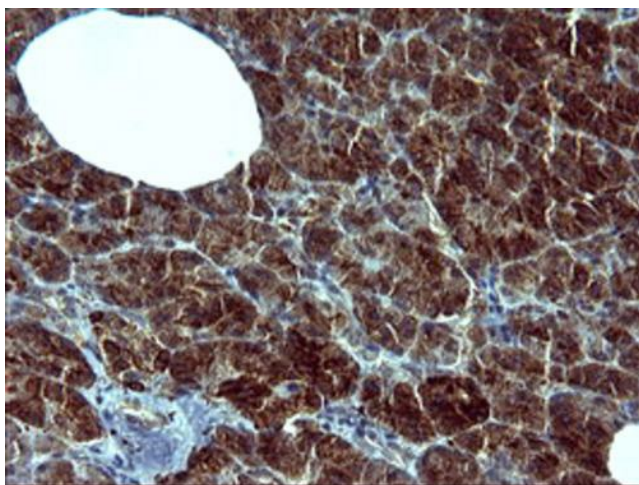
### Product images:



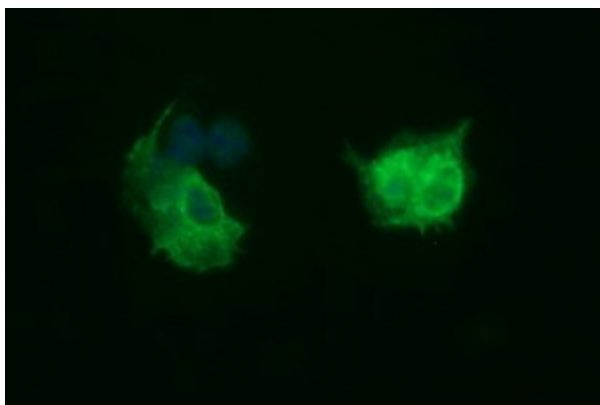
HEK293T cells were transfected with the pCMV6-ENTRY control (Left lane) or pCMV6-ENTRY TUBB2B ([RC209075], Right lane) cDNA for 48 hrs and lysed. Equivalent amounts of cell lysates (5 ug per lane) were separated by SDS-PAGE and immunoblotted with anti-TUBB2B. Positive lysates [LY405880] (100ug) and [LC405880] (20ug) can be purchased separately from OriGene.



Immunohistochemical staining of paraffin-embedded Human Kidney tissue within the normal limits using anti-TUBB2B mouse monoclonal antibody. ([TA506684]). Heat-induced epitope retrieval by EDTA solution buffer pH 8.0 at 120°C for 3 min.



Immunohistochemical staining of paraffin-embedded Human pancreas tissue within the normal limits using anti-TUBB2B mouse monoclonal antibody. ([TA506684]). Heat-induced epitope retrieval by EDTA solution buffer pH 8.0 at 120°C for 3 min.



Anti-TUBB2B mouse monoclonal antibody ([TA506684]) immunofluorescent staining of COS7 cells transiently transfected by pCMV6-ENTRY TUBB2B ([RC209075]).