

Product datasheet for **CF506604**

TUBB2B Mouse Monoclonal Antibody [Clone ID: OTI2G4]

Product data:

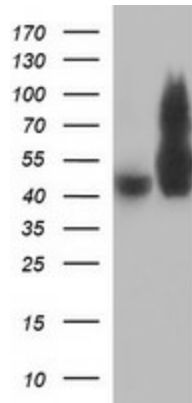
| | |
|-------------------------|--|
| Product Type: | Primary Antibodies |
| Clone Name: | OTI2G4 |
| Applications: | IF, WB |
| Recommended Dilution: | WB 1:4000, IF 1:100 |
| Reactivity: | Human, Mouse, Rat |
| Host: | Mouse |
| Isotype: | IgG2b |
| Clonality: | Monoclonal |
| Immunogen: | Full length human recombinant protein of human TUBB2B(NP_821080) produced in HEK293T cell. |
| Formulation: | Lyophilized powder (original buffer 1X PBS, pH 7.3, 8% trehalose) |
| Reconstitution Method: | For reconstitution, we recommend adding 100uL distilled water to a final antibody concentration of about 1 mg/mL. To use this carrier-free antibody for conjugation experiment, we strongly recommend performing another round of desalting process. (OriGene recommends Zeba Spin Desalting Columns, 7KMWCO from Thermo Scientific) |
| Purification: | Purified from mouse ascites fluids or tissue culture supernatant by affinity chromatography (protein A/G) |
| Conjugation: | Unconjugated |
| Storage: | Store at -20°C as received. |
| Stability: | Stable for 12 months from date of receipt. |
| Predicted Protein Size: | 49.8 kDa |
| Gene Name: | tubulin beta 2B class IIb |
| Database Link: | NP_821080 Entrez Gene 73710 Mouse Entrez Gene 291081 Rat Entrez Gene 347733 Human Q9BVA1 |
| Synonyms: | bA506K6.1; PMGYSA |
| Protein Families: | Druggable Genome |



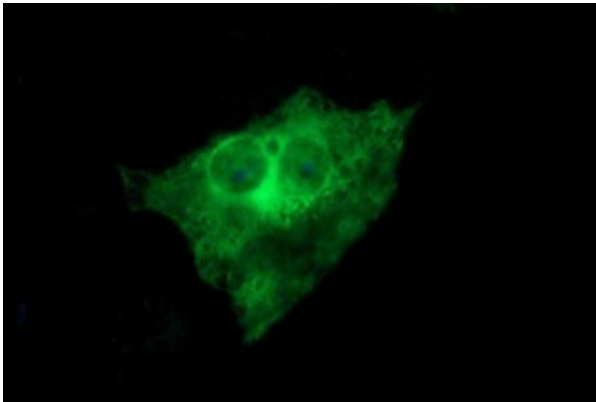
[View online »](#)

Protein Pathways: Gap junction, Pathogenic Escherichia coli infection

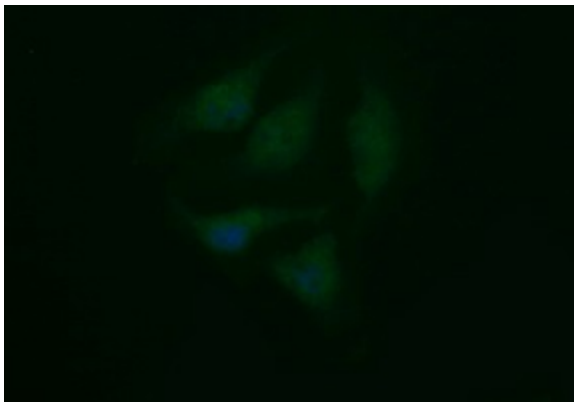
Product images:



HEK293T cells were transfected with the pCMV6-ENTRY control (Left lane) or pCMV6-ENTRY TUBB2B ([RC209075], Right lane) cDNA for 48 hrs and lysed. Equivalent amounts of cell lysates (5 ug per lane) were separated by SDS-PAGE and immunoblotted with anti-TUBB2B. Positive lysates [LY405880] (100ug) and [LC405880] (20ug) can be purchased separately from OriGene.



Anti-TUBB2B mouse monoclonal antibody ([TA506604]) immunofluorescent staining of COS7 cells transiently transfected by pCMV6-ENTRY TUBB2B ([RC209075]).



Immunofluorescent staining of HeLa cells using anti-TUBB2B mouse monoclonal antibody ([TA506604]).