

## Product datasheet for **CF506590**

### beta II Tubulin (TUBB2A) Mouse Monoclonal Antibody [Clone ID: OTI3E6]

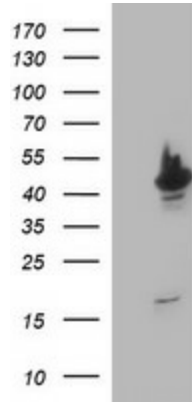
#### Product data:

Product Type:	Primary Antibodies
Clone Name:	OTI3E6
Applications:	IF, IHC, WB
Recommended Dilution:	WB 1:4000, IF 1:100, IHC: 1:150
Reactivity:	Human, Mouse, Rat
Host:	Mouse
Isotype:	IgG2a
Clonality:	Monoclonal
Immunogen:	Full length human recombinant protein of human TUBB2A(NP_001060) produced in HEK293T cell.
Formulation:	Lyophilized powder (original buffer 1X PBS, pH 7.3, 8% trehalose)
Reconstitution Method:	For reconstitution, we recommend adding 100uL distilled water to a final antibody concentration of about 1 mg/mL. To use this carrier-free antibody for conjugation experiment, we strongly recommend performing another round of desalting process. (OriGene recommends Zeba Spin Desalting Columns, 7KMWCO from Thermo Scientific)
Purification:	Purified from mouse ascites fluids or tissue culture supernatant by affinity chromatography (protein A/G)
Conjugation:	Unconjugated
Storage:	Store at -20°C as received.
Stability:	Stable for 12 months from date of receipt.
Gene Name:	tubulin beta 2A class IIa
Database Link:	<a href="#">NP_001060</a> <a href="#">Entrez Gene 22151 Mouse</a> <a href="#">Entrez Gene 498736 Rat</a> <a href="#">Entrez Gene 7280 Human</a> <a href="#">Q13885</a>
Synonyms:	CDCBM5; dj40E16.7; TUBB; TUBB2
Protein Families:	Druggable Genome
Protein Pathways:	Gap junction, Pathogenic Escherichia coli infection

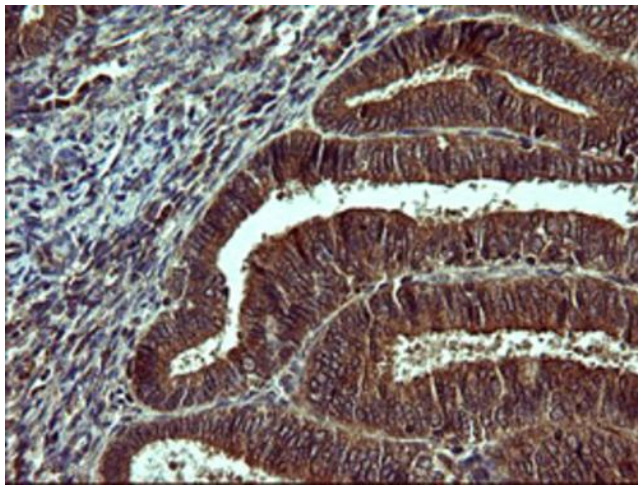


[View online »](#)

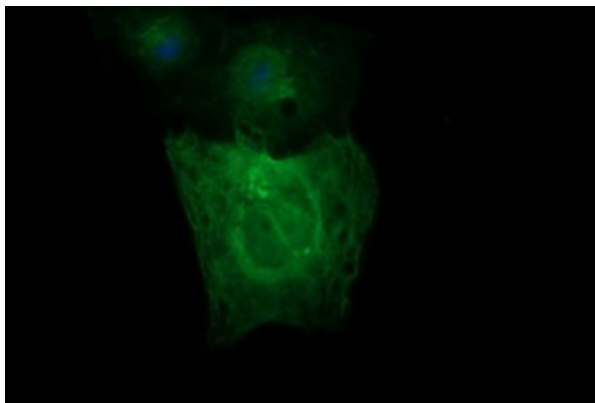
Product images:



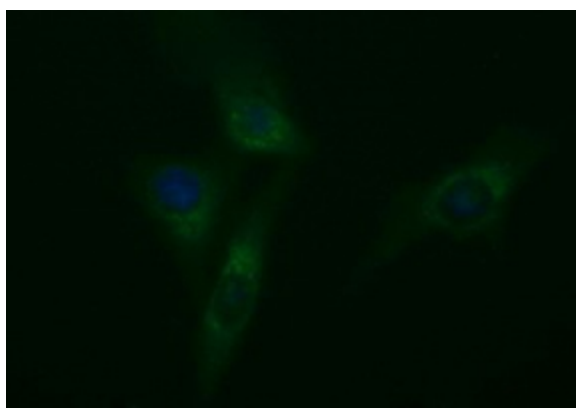
HEK293T cells were transfected with the pCMV6-ENTRY control (Cat# [PS100001], Left lane) or pCMV6-ENTRY TUBB2A (Cat# [RC205881], Right lane) cDNA for 48 hrs and lysed. Equivalent amounts of cell lysates (5 ug per lane) were separated by SDS-PAGE and immunoblotted with anti-TUBB2A (Cat# [TA506590]). Positive lysates [LY420706] (100ug) and [LC420706] (20ug) can be purchased separately from OriGene.



Immunohistochemical staining of paraffin-embedded Adenocarcinoma of Human endometrium tissue using anti-TUBB2A mouse monoclonal antibody. ([TA506590])



Anti-TUBB2A mouse monoclonal antibody ([TA506590]) immunofluorescent staining of COS7 cells transiently transfected by pCMV6-ENTRY TUBB2A ([RC205881]).



Immunofluorescent staining of HeLa cells using anti-TUBB2A mouse monoclonal antibody ([TA506590]).