

## Product datasheet for **CF506584**

### TGF beta 1 (TGFB1) Mouse Monoclonal Antibody [Clone ID: OTI2B5]

#### Product data:

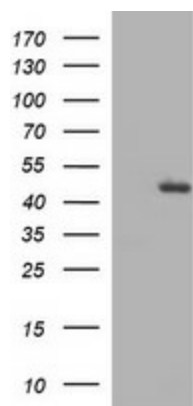
Product Type:	Primary Antibodies
Clone Name:	OTI2B5
Applications:	WB
Recommended Dilution:	WB 1:2000
Reactivity:	Human, Mouse, Rat
Host:	Mouse
Isotype:	IgG2a
Clonality:	Monoclonal
Immunogen:	Full length human recombinant protein of human TGFB1(NP_000651) produced in HEK293T cell.
Formulation:	Lyophilized powder (original buffer 1X PBS, pH 7.3, 8% trehalose)
Reconstitution Method:	For reconstitution, we recommend adding 100uL distilled water to a final antibody concentration of about 1 mg/mL. To use this carrier-free antibody for conjugation experiment, we strongly recommend performing another round of desalting process. (OriGene recommends Zeba Spin Desalting Columns, 7KMWCO from Thermo Scientific)
Purification:	Purified from mouse ascites fluids or tissue culture supernatant by affinity chromatography (protein A/G)
Conjugation:	Unconjugated
Storage:	Store at -20°C as received.
Stability:	Stable for 12 months from date of receipt.
Predicted Protein Size:	44 kDa
Gene Name:	transforming growth factor beta 1
Database Link:	<a href="#">NP_000651</a> <a href="#">Entrez Gene 21803 Mouse</a> <a href="#">Entrez Gene 59086 Rat</a> <a href="#">Entrez Gene 7040 Human</a> <a href="#">P01137</a>
Synonyms:	CED; DPD1; LAP; TGFB; TGFbeta
Protein Families:	Druggable Genome, ES Cell Differentiation/IPS, Secreted Protein, Transcription Factors



[View online »](#)

**Protein Pathways:**

Cell cycle, Chronic myeloid leukemia, Colorectal cancer, Cytokine-cytokine receptor interaction, Dilated cardiomyopathy, Hypertrophic cardiomyopathy (HCM), MAPK signaling pathway, Pancreatic cancer, Pathways in cancer, Renal cell carcinoma, TGF-beta signaling pathway

**Product images:**

HEK293T cells were transfected with the pCMV6-ENTRY control (Left lane) or pCMV6-ENTRY TGFB1 ([RC200973], Right lane) cDNA for 48 hrs and lysed. Equivalent amounts of cell lysates (5 ug per lane) were separated by SDS-PAGE and immunoblotted with anti-TGFB1.