

Product datasheet for **CF506582**

Tubulin (TUBA1B) Mouse Monoclonal Antibody [Clone ID: OTI3G3]

Product data:

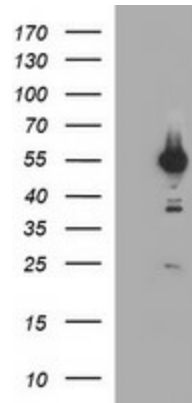
Product Type:	Primary Antibodies
Clone Name:	OTI3G3
Applications:	IHC, WB
Recommended Dilution:	WB 1:4000, IHC: 1:150
Reactivity:	Human, Mouse
Host:	Mouse
Isotype:	IgG2a
Clonality:	Monoclonal
Immunogen:	Full length human recombinant protein of human TUBA1B(NP_006073) produced in HEK293T cell.
Formulation:	Lyophilized powder (original buffer 1X PBS, pH 7.3, 8% trehalose)
Reconstitution Method:	For reconstitution, we recommend adding 100uL distilled water to a final antibody concentration of about 1 mg/mL. To use this carrier-free antibody for conjugation experiment, we strongly recommend performing another round of desalting process. (OriGene recommends Zeba Spin Desalting Columns, 7KMWCO from Thermo Scientific)
Purification:	Purified from mouse ascites fluids or tissue culture supernatant by affinity chromatography (protein A/G)
Conjugation:	Unconjugated
Storage:	Store at -20°C as received.
Stability:	Stable for 12 months from date of receipt.
Predicted Protein Size:	50 kDa
Gene Name:	tubulin alpha 1b
Database Link:	NP_006073 Entrez Gene 22143 Mouse Entrez Gene 10376 Human P68363
Synonyms:	K-ALPHA-1
Protein Families:	Druggable Genome



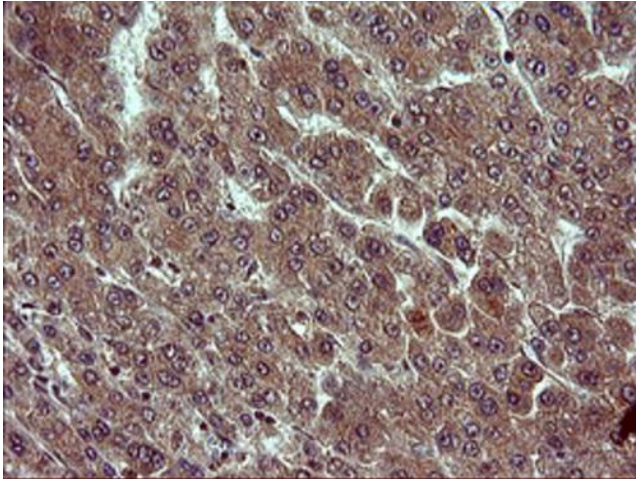
[View online >](#)

Protein Pathways: Gap junction, Pathogenic Escherichia coli infection

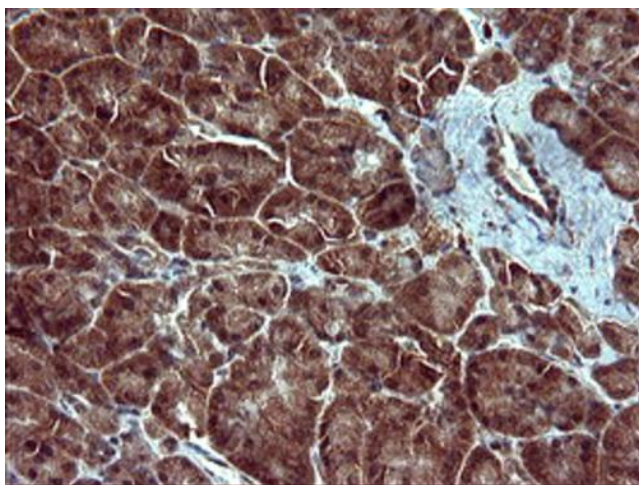
Product images:



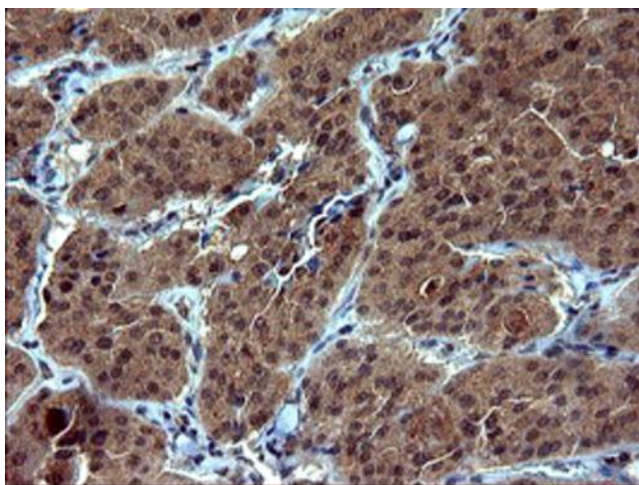
HEK293T cells were transfected with the pCMV6-ENTRY control (Cat# [PS100001], Left lane) or pCMV6-ENTRY TUBA1B (Cat# [RC205008], Right lane) cDNA for 48 hrs and lysed. Equivalent amounts of cell lysates (5 ug per lane) were separated by SDS-PAGE and immunoblotted with anti-TUBA1B (Cat# [TA506582]). Positive lysates [LY401831] (100ug) and [LC401831] (20ug) can be purchased separately from OriGene.



Immunohistochemical staining of paraffin-embedded Carcinoma of Human liver tissue using anti-TUBA1B mouse monoclonal antibody. ([TA506582])



Immunohistochemical staining of paraffin-embedded Human pancreas tissue within the normal limits using anti-TUBA1B mouse monoclonal antibody. ([TA506582])



Immunohistochemical staining of paraffin-embedded Carcinoma of Human thyroid tissue using anti-TUBA1B mouse monoclonal antibody. ([TA506582])