

Product datasheet for **CF506557**

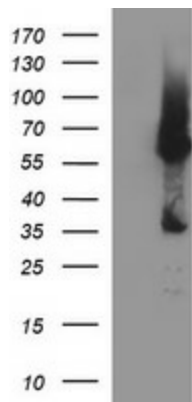
Tyrosine Hydroxylase (TH) Mouse Monoclonal Antibody [Clone ID: OTI1A4]

Product data:

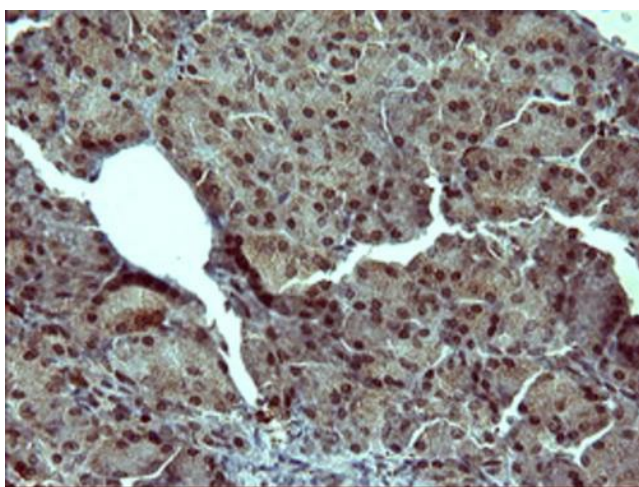
Product Type:	Primary Antibodies
Clone Name:	OTI1A4
Applications:	IF, IHC, WB
Recommended Dilution:	WB 1:4000, IF 1:100, IHC: 1:150
Reactivity:	Human, Mouse, Rat
Host:	Mouse
Isotype:	IgG1
Clonality:	Monoclonal
Immunogen:	Full length human recombinant protein of human TH(NP_000351) produced in HEK293T cell.
Formulation:	Lyophilized powder (original buffer 1X PBS, pH 7.3, 8% trehalose)
Reconstitution Method:	For reconstitution, we recommend adding 100uL distilled water to a final antibody concentration of about 1 mg/mL. To use this carrier-free antibody for conjugation experiment, we strongly recommend performing another round of desalting process. (OriGene recommends Zeba Spin Desalting Columns, 7KMWCO from Thermo Scientific)
Purification:	Purified from mouse ascites fluids or tissue culture supernatant by affinity chromatography (protein A/G)
Conjugation:	Unconjugated
Storage:	Store at -20°C as received.
Stability:	Stable for 12 months from date of receipt.
Predicted Protein Size:	55.4 kDa
Gene Name:	tyrosine hydroxylase
Database Link:	NP_000351 Entrez Gene 21823 Mouse Entrez Gene 25085 Rat Entrez Gene 7054 Human P07101
Synonyms:	DYT5b; DYT14; TYH
Protein Families:	Druggable Genome
Protein Pathways:	Metabolic pathways, Parkinson's disease, Tyrosine metabolism



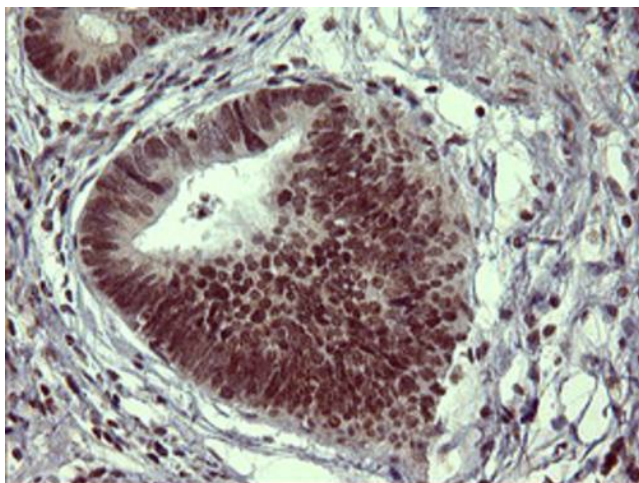
[View online »](#)

Product images:

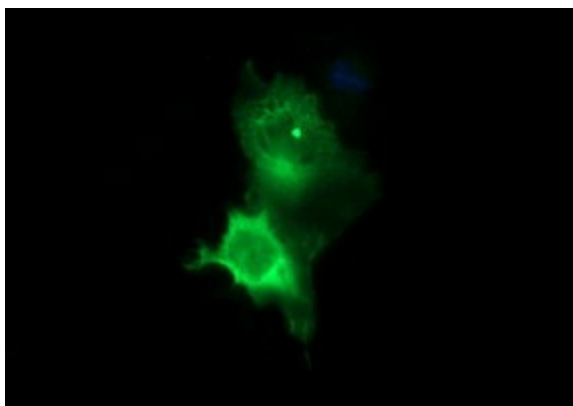
HEK293T cells were transfected with the pCMV6-ENTRY control (Left lane) or pCMV6-ENTRY TH ([RC211218], Right lane) cDNA for 48 hrs and lysed. Equivalent amounts of cell lysates (5 ug per lane) were separated by SDS-PAGE and immunoblotted with anti-TH. Positive lysates [LY424777] (100ug) and [LC424777] (20ug) can be purchased separately from OriGene.



Immunohistochemical staining of paraffin-embedded Human pancreas tissue within the normal limits using anti-TH mouse monoclonal antibody. ([TA506557]). Heat-induced epitope retrieval by EDTA solution buffer pH 8.0 at 120°C for 3 min.



Immunohistochemical staining of paraffin-embedded Carcinoma of Human pancreas tissue using anti-TH mouse monoclonal antibody. ([TA506557]). Heat-induced epitope retrieval by EDTA solution buffer pH 8.0 at 120°C for 3 min.



Anti-TH mouse monoclonal antibody ([TA506557]) immunofluorescent staining of COS7 cells transiently transfected by pCMV6-ENTRY TH ([RC211218]).