

## Product datasheet for **CF506484**

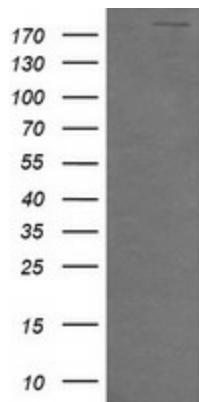
### DOCK8 Mouse Monoclonal Antibody [Clone ID: OTI2C11]

#### Product data:

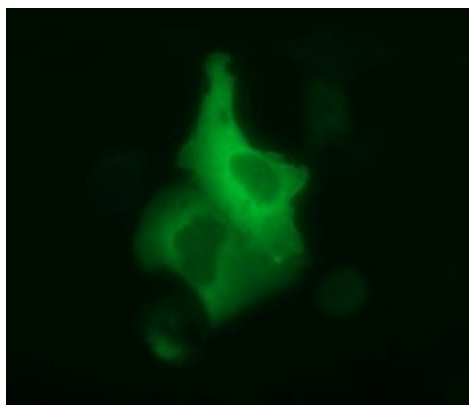
Product Type:	Primary Antibodies
Clone Name:	OTI2C11
Applications:	IF, WB
Recommended Dilution:	WB 1:4000, IF 1:100
Reactivity:	Human, Mouse, Rat
Host:	Mouse
Isotype:	IgG1
Clonality:	Monoclonal
Immunogen:	Human recombinant protein fragment corresponding to amino acids 833-1160 of human DOCK8(NP_982272) produced in HEK293T cell.
Formulation:	Lyophilized powder (original buffer 1X PBS, pH 7.3, 8% trehalose)
Reconstitution Method:	For reconstitution, we recommend adding 100uL distilled water to a final antibody concentration of about 1 mg/mL. To use this carrier-free antibody for conjugation experiment, we strongly recommend performing another round of desalting process. (OriGene recommends Zeba Spin Desalting Columns, 7KMWCO from Thermo Scientific)
Purification:	Purified from mouse ascites fluids or tissue culture supernatant by affinity chromatography (protein A/G)
Conjugation:	Unconjugated
Storage:	Store at -20°C as received.
Stability:	Stable for 12 months from date of receipt.
Predicted Protein Size:	238.3 kDa
Gene Name:	dedicator of cytokinesis 8
Database Link:	<a href="#">NP_982272</a> <a href="#">Entrez Gene 76088 Mouse</a> <a href="#">Entrez Gene 499337 Rat</a> <a href="#">Entrez Gene 81704 Human</a> <a href="#">Q8NF50</a>
Synonyms:	HEL-205; MRD2; ZIR8



[View online »](#)

**Product images:**

HEK293T cells were transfected with the pCMV6-ENTRY control (Left lane) or pCMV6-ENTRY DOCK8 ([RC222789], Right lane) cDNA for 48 hrs and lysed. Equivalent amounts of cell lysates (5 ug per lane) were separated by SDS-PAGE and immunoblotted with anti-DOCK8. Positive lysates [LY404295] (100ug) and [LC404295] (20ug) can be purchased separately from OriGene.



Anti-DOCK8 mouse monoclonal antibody ([TA506484]) immunofluorescent staining of COS7 cells transiently transfected by pCMV6-ENTRY DOCK8 ([RC222789]).