

## Product datasheet for **CF506470**

### **p73 (TP73) Mouse Monoclonal Antibody [Clone ID: OTI2H5]**

#### **Product data:**

<b>Product Type:</b>	Primary Antibodies
<b>Clone Name:</b>	OTI2H5
<b>Applications:</b>	IF, IHC, WB
<b>Recommended Dilution:</b>	WB 1:4000, IHC 1:150, IF 1:100
<b>Reactivity:</b>	Human, Mouse, Rat
<b>Host:</b>	Mouse
<b>Isotype:</b>	IgG1
<b>Clonality:</b>	Monoclonal
<b>Immunogen:</b>	Human recombinant protein fragment corresponding to amino acids 167-409 of human TP73 (NP_005418) produced in HEK293T cell.
<b>Formulation:</b>	Lyophilized powder (original buffer 1X PBS, pH 7.3, 8% trehalose)
<b>Reconstitution Method:</b>	For reconstitution, we recommend adding 100uL distilled water to a final antibody concentration of about 1 mg/mL. To use this carrier-free antibody for conjugation experiment, we strongly recommend performing another round of desalting process. (OriGene recommends Zeba Spin Desalting Columns, 7KMWCO from Thermo Scientific)
<b>Purification:</b>	Purified from mouse ascites fluids or tissue culture supernatant by affinity chromatography (protein A/G)
<b>Conjugation:</b>	Unconjugated
<b>Storage:</b>	Store at -20°C as received.
<b>Stability:</b>	Stable for 12 months from date of receipt.
<b>Predicted Protein Size:</b>	69.4 kDa
<b>Gene Name:</b>	tumor protein p73
<b>Database Link:</b>	<a href="#">NP_005418</a> <a href="#">Entrez Gene 362675 Rat</a> <a href="#">Entrez Gene 7161 Human</a> <a href="#">O15350</a>



[View online »](#)

**Background:**

This gene encodes a member of the p53 family of transcription factors involved in cellular responses to stress and development. It maps to a region on chromosome 1p36 that is frequently deleted in neuroblastoma and other tumors, and thought to contain multiple tumor suppressor genes. The demonstration that this gene is monoallelically expressed (likely from the maternal allele), supports the notion that it is a candidate gene for neuroblastoma. Many transcript variants resulting from alternative splicing and/or use of alternate promoters have been found for this gene, but the biological validity and the full-length nature of some variants have not been determined. [provided by RefSeq, Feb

**Synonyms:**

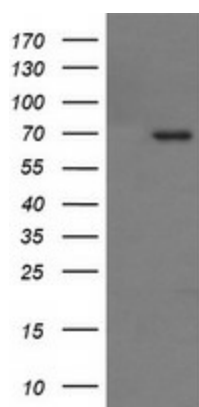
P73

**Protein Families:**

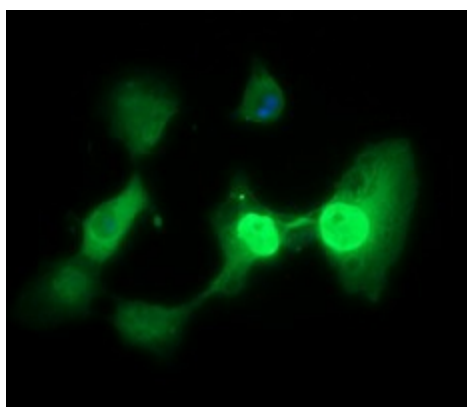
Druggable Genome, Transcription Factors

**Protein Pathways:**

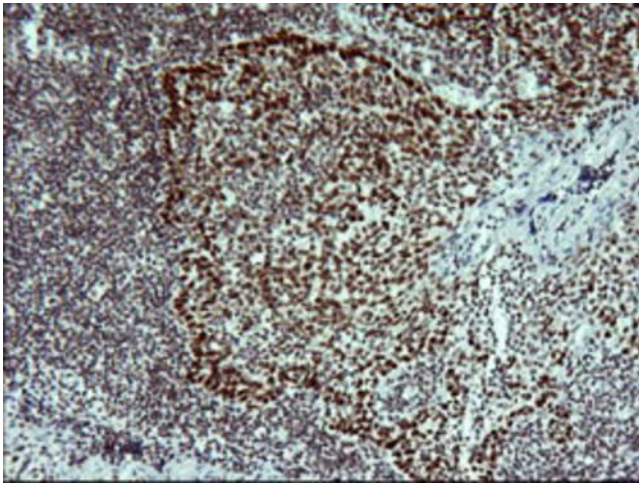
Neurotrophin signaling pathway, p53 signaling pathway

**Product images:**

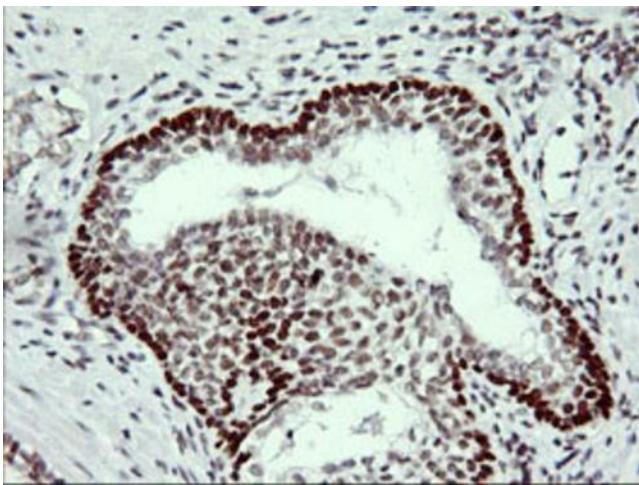
HEK293T cells were transfected with the pCMV6-ENTRY control (Cat# [PS100001], Left lane) or pCMV6-ENTRY TP73 (Cat# [RC220864], Right lane) cDNA for 48 hrs and lysed. Equivalent amounts of cell lysates (5 ug per lane) were separated by SDS-PAGE and immunoblotted with anti-TP73 (Cat# [TA506470]). Positive lysates [LY417321] (100ug) and [LC417321] (20ug) can be purchased separately from OriGene.



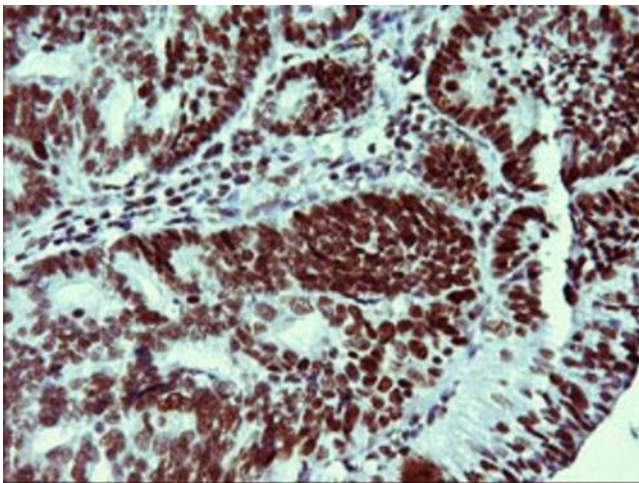
Anti-TP73 mouse monoclonal antibody ([TA506470]) immunofluorescent staining of COS7 cells transiently transfected by pCMV6-ENTRY TP73 ([RC220864]).



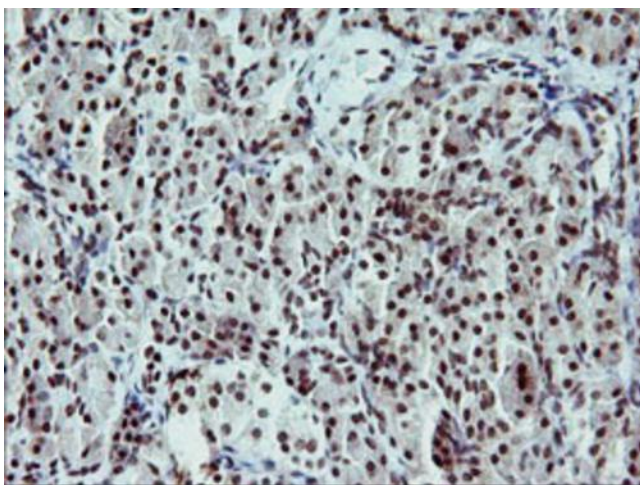
Immunohistochemical staining of paraffin-embedded Human lymph node tissue within the normal limits using anti-TP73 mouse monoclonal antibody. (Heat-induced epitope retrieval by 10mM citric buffer, pH6.0, 120°C for 3min, [TA506470])



Immunohistochemical staining of paraffin-embedded Carcinoma of Human prostate tissue using anti-TP73 mouse monoclonal antibody. (Heat-induced epitope retrieval by 10mM citric buffer, pH6.0, 120°C for 3min, [TA506470])



Immunohistochemical staining of paraffin-embedded Carcinoma of Human pancreas tissue using anti-TP73 mouse monoclonal antibody. (Heat-induced epitope retrieval by 10mM citric buffer, pH6.0, 120°C for 3min, [TA506470])



Immunohistochemical staining of paraffin-embedded Human pancreas tissue within the normal limits using anti-TP73 mouse monoclonal antibody. (Heat-induced epitope retrieval by 10mM citric buffer, pH6.0, 120°C for 3min, [TA506470])