

## Product datasheet for **CF506443**

### IL1 beta (IL1B) Mouse Monoclonal Antibody [Clone ID: OTI3E1]

#### Product data:

Product Type:	Primary Antibodies
Clone Name:	OTI3E1
Applications:	IF, IHC, WB
Recommended Dilution:	WB 1:1000~4000, IHC 1:150, IF 1:100
Reactivity:	Human
Host:	Mouse
Isotype:	IgG1
Clonality:	Monoclonal
Immunogen:	Full length human recombinant protein of human IL1B(NP_000567) produced in HEK293T cell.
Formulation:	Lyophilized powder (original buffer 1X PBS, pH 7.3, 8% trehalose)
Reconstitution Method:	For reconstitution, we recommend adding 100uL distilled water to a final antibody concentration of about 1 mg/mL. To use this carrier-free antibody for conjugation experiment, we strongly recommend performing another round of desalting process. (OriGene recommends Zeba Spin Desalting Columns, 7KMWCO from Thermo Scientific)
Purification:	Purified from mouse ascites fluids or tissue culture supernatant by affinity chromatography (protein A/G)
Conjugation:	Unconjugated
Storage:	Store at -20°C as received.
Stability:	Stable for 12 months from date of receipt.
Predicted Protein Size:	30.6 kDa
Gene Name:	interleukin 1 beta
Database Link:	<a href="#">NP_000567</a> <a href="#">Entrez Gene 3553 Human P01584</a>



[View online »](#)

**Background:**

The protein encoded by this gene is a member of the interleukin 1 cytokine family. This cytokine is produced by activated macrophages as a proprotein, which is proteolytically processed to its active form by caspase 1 (CASP1/ICE). This cytokine is an important mediator of the inflammatory response, and is involved in a variety of cellular activities, including cell proliferation, differentiation, and apoptosis. The induction of cyclooxygenase-2 (PTGS2/COX2) by this cytokine in the central nervous system (CNS) is found to contribute to inflammatory pain hypersensitivity. This gene and eight other interleukin 1 family genes form a cytokine gene cluster on chromosome 2. [provided by RefSeq, Jul 2008]

**Synonyms:**

IL-1; IL1-BETA; IL1F2

**Protein Families:**

Druggable Genome, Secreted Protein

**Protein Pathways:**

Alzheimer's disease, Apoptosis, Cytokine-cytokine receptor interaction, Cytosolic DNA-sensing pathway, Graft-versus-host disease, Hematopoietic cell lineage, MAPK signaling pathway, NOD-like receptor signaling pathway, Prion diseases, Toll-like receptor signaling pathway, Type I diabetes mellitus

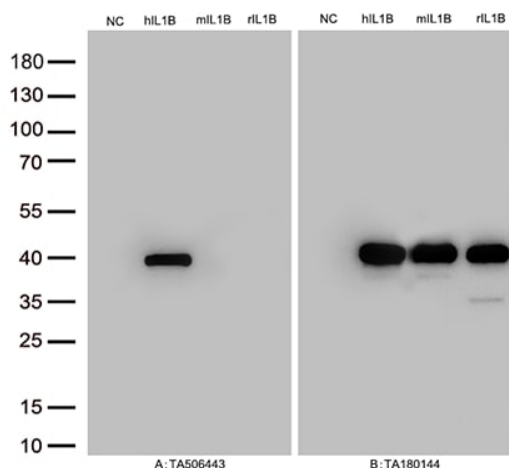
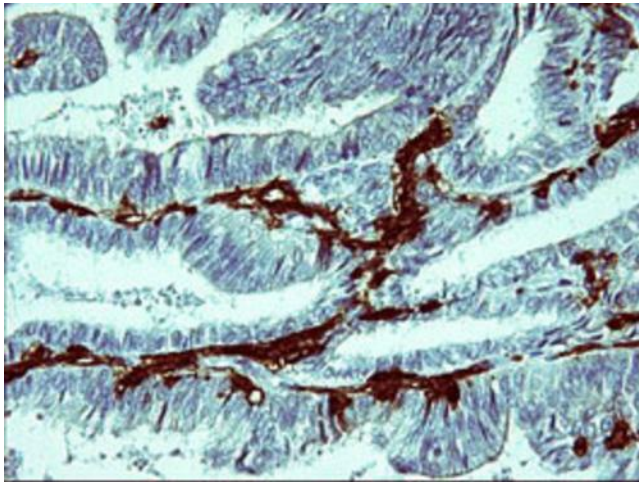
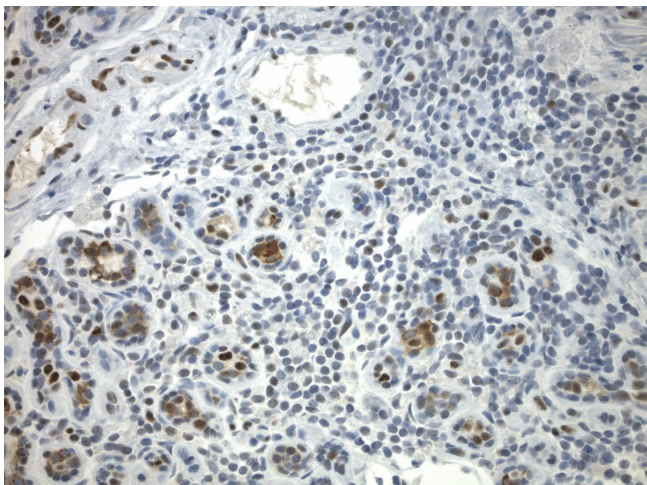
**Product images:**


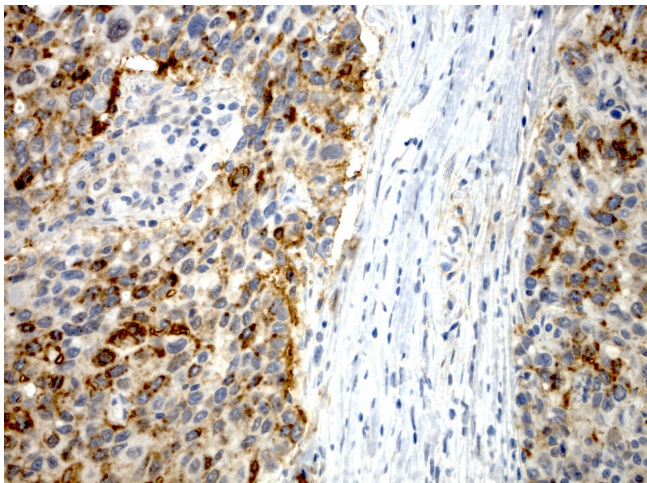
Figure A, Western blot analysis of overexpressed lysates(25ug per lane) from HEK293T cells transfected with empty plasmid ([PS100001], NC), human IL1B plasmid ([RC202079], hIL1B), mouse IL1B plasmid ([MR226719], mIL1B), rat IL1B plasmid ([RR211023], rIL1B) using anti-IL1B antibody [TA506443] (1:500). Figure B, Western blot analysis of the same samples as figure A with anti-DDK antibody ([TA180144], 1:1000)



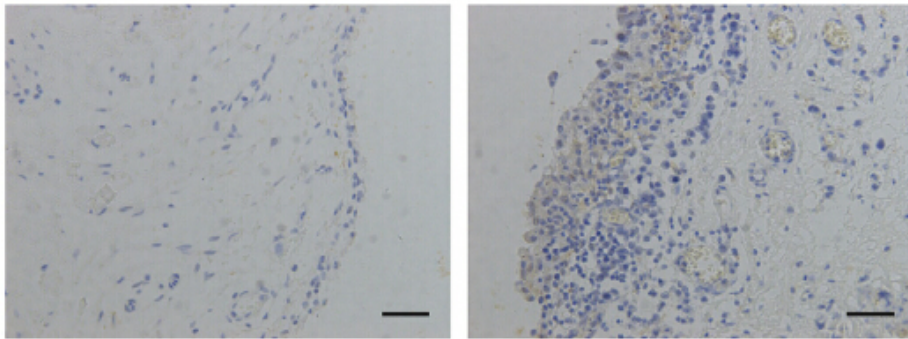
Immunohistochemical staining of paraffin-embedded Adenocarcinoma of Human endometrium tissue using anti-IL1B mouse monoclonal antibody. Heat-induced epitope retrieval by EDTA solution buffer pH 8.0 at 120°C for 3 min.



Immunohistochemical staining of paraffin-embedded normal breast cancer and normal adjacent using anti-IL1B antibody [TA506443] clone OT13E1 mouse monoclonal antibody. Protocol used HIER TEE pH9.0 (cat# [B21-100]) and anti-IL1B at 1:100 dilution. Detection was done with Polink1 Broad Mouse and Rabbit C/N [D11-18] with DAB Kit. Image 40x magnification.



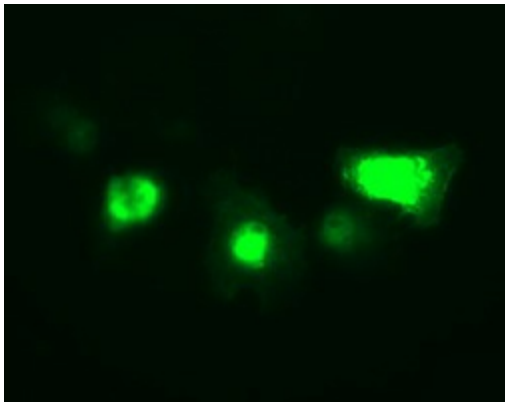
Immunohistochemical staining of paraffin-embedded breast cancer using anti-IL1B antibody [TA506443] clone OT13E1 mouse monoclonal antibody. HIER TEE pH9.0 (cat# [B21-100]) and anti-IL1B at 1:100 dilution. Detection was done with Polink1 Broad Mouse and Rabbit C/N [D11-18] with DAB Kit. Image 40x magnification.

IL-1 $\beta$ /Hematoxylin

Fracture

OA

Figure from citation: Immunohistochemistry of IL1B protein level by using anti-IL1B antibody in synovial tissues from fracture and OA patients, respectively. Dilution: 1:100 [View Citation](#). Heat-induced epitope retrieval by EDTA solution buffer pH 8.0 at 120°C for 3 min.



Anti-IL1B mouse monoclonal antibody ([TA506443]) immunofluorescent staining of COS7 cells transiently transfected by pCMV6-ENTRY IL1B ([RC202079]).