

## Product datasheet for **CF506430**

### SNAIL (SNAI1) Mouse Monoclonal Antibody [Clone ID: OTI1H7]

#### Product data:

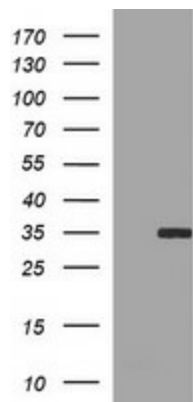
Product Type:	Primary Antibodies
Clone Name:	OTI1H7
Applications:	WB
Recommended Dilution:	WB 1:1000
Reactivity:	Human, Mouse, Rat
Host:	Mouse
Isotype:	IgG1
Clonality:	Monoclonal
Immunogen:	Full length human recombinant protein of human SNAI1(NP_005976) produced in HEK293T cell.
Formulation:	Lyophilized powder (original buffer 1X PBS, pH 7.3, 8% trehalose)
Reconstitution Method:	For reconstitution, we recommend adding 100uL distilled water to a final antibody concentration of about 1 mg/mL. To use this carrier-free antibody for conjugation experiment, we strongly recommend performing another round of desalting process. (OriGene recommends Zeba Spin Desalting Columns, 7KMWCO from Thermo Scientific)
Purification:	Purified from mouse ascites fluids or tissue culture supernatant by affinity chromatography (protein A/G)
Conjugation:	Unconjugated
Storage:	Store at -20°C as received.
Stability:	Stable for 12 months from date of receipt.
Predicted Protein Size:	28.9 kDa
Gene Name:	snail family transcriptional repressor 1
Database Link:	<a href="#">NP_005976</a> <a href="#">Entrez Gene 20613 Mouse</a> <a href="#">Entrez Gene 116490 Rat</a> <a href="#">Entrez Gene 6615 Human</a> <a href="#">O95863</a>
Synonyms:	dj710H13.1; SLUGH2; SNA; SNAH; SNAIL; SNAIL1
Protein Families:	Druggable Genome



[View online »](#)

Protein Pathways: Adherens junction

### Product images:



HEK293T cells were transfected with the pCMV6-ENTRY control (Left lane) or pCMV6-ENTRY SNAI1 ([RC204581], Right lane) cDNA for 48 hrs and lysed. Equivalent amounts of cell lysates (5 ug per lane) were separated by SDS-PAGE and immunoblotted with anti-SNAI1. Positive lysates [LY401811] (100ug) and [LC401811] (20ug) can be purchased separately from OriGene.