

Product datasheet for **CF506407**

CD22 Mouse Monoclonal Antibody [Clone ID: OTI1F12]

Product data:

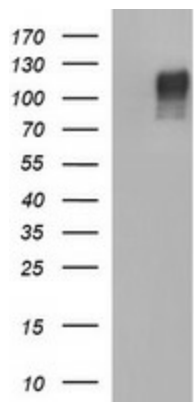
Product Type:	Primary Antibodies
Clone Name:	OTI1F12
Applications:	IF, WB
Recommended Dilution:	WB 1:400~4000, IF 1:100
Reactivity:	Human, Dog, Rat, Monkey, Mouse
Host:	Mouse
Isotype:	IgG1
Clonality:	Monoclonal
Immunogen:	Full length human recombinant protein of human CD22(NP_001762) produced in HEK293T cell.
Formulation:	Lyophilized powder (original buffer 1X PBS, pH 7.3, 8% trehalose)
Reconstitution Method:	For reconstitution, we recommend adding 100uL distilled water to a final antibody concentration of about 1 mg/mL. To use this carrier-free antibody for conjugation experiment, we strongly recommend performing another round of desalting process. (OriGene recommends Zeba Spin Desalting Columns, 7KMWCO from Thermo Scientific)
Purification:	Purified from mouse ascites fluids or tissue culture supernatant by affinity chromatography (protein A/G)
Conjugation:	Unconjugated
Storage:	Store at -20°C as received.
Stability:	Stable for 12 months from date of receipt.
Gene Name:	CD22 molecule
Database Link:	NP_001762 Entrez Gene 12483 Mouse Entrez Gene 308501 Rat Entrez Gene 476485 Dog Entrez Gene 106994739 Monkey Entrez Gene 933 Human P20273
Synonyms:	SIGLEC-2; SIGLEC2
Protein Families:	Druggable Genome, Transmembrane



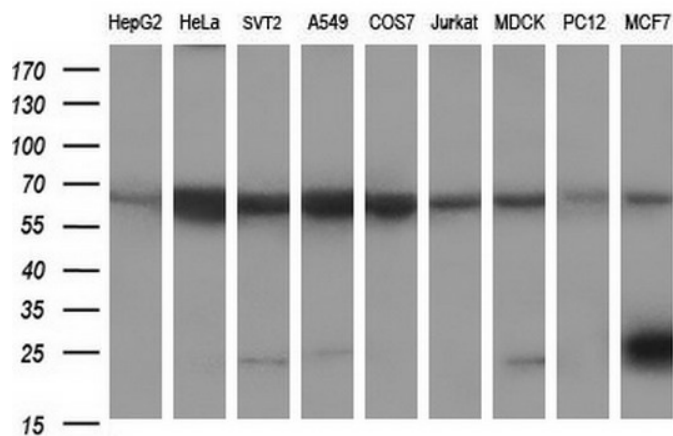
[View online »](#)

Protein Pathways: B cell receptor signaling pathway, Cell adhesion molecules (CAMs), Hematopoietic cell lineage

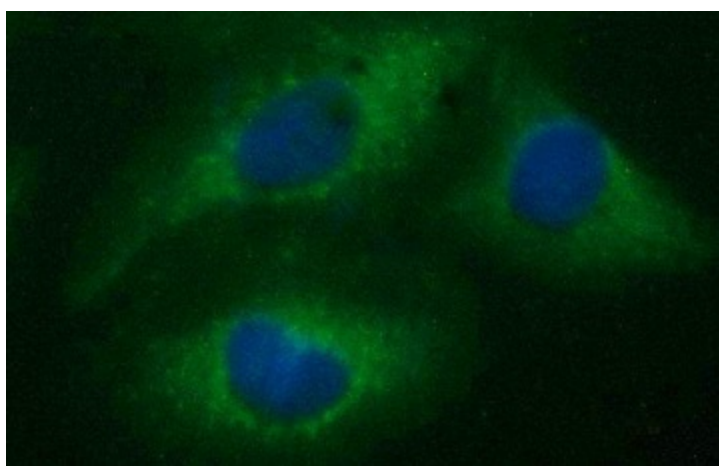
Product images:



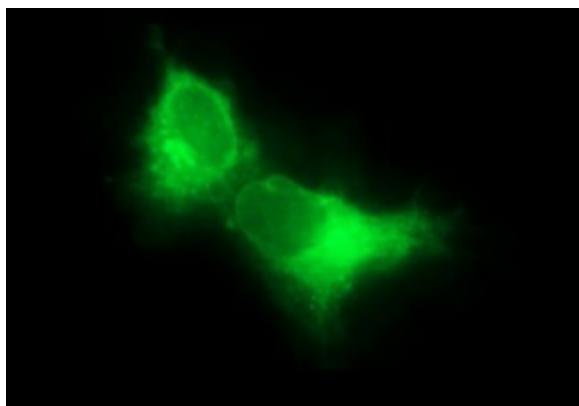
HEK293T cells were transfected with the pCMV6-ENTRY control (Cat# [PS100001], Left lane) or pCMV6-ENTRY CD22 (Cat# [RC216939], Right lane) cDNA for 48 hrs and lysed. Equivalent amounts of cell lysates (5 ug per lane) were separated by SDS-PAGE and immunoblotted with anti-CD22(Cat# [TA506407]).



Western blot analysis of extracts (35ug) from 9 different cell lines by using anti-CD22 monoclonal antibody (HepG2: human; HeLa: human; SVT2: mouse; A549: human; COS7: monkey; Jurkat: human; MDCK: canine; PC12: rat; MCF7: human).



Immunofluorescent staining of HeLa cells using anti-CD22 mouse monoclonal antibody ([TA506407]).



Anti-CD22 mouse monoclonal antibody ([TA506407]) immunofluorescent staining of COS7 cells transiently transfected by pCMV6-ENTRY CD22 ([RC216939]).