

Product datasheet for **CF506343**

CD64 (FCGR1A) Mouse Monoclonal Antibody [Clone ID: OTI3D3]

Product data:

Product Type:	Primary Antibodies
Clone Name:	OTI3D3
Applications:	WB
Recommended Dilution:	WB 1:500
Reactivity:	Human
Host:	Mouse
Isotype:	IgG1
Clonality:	Monoclonal
Immunogen:	Full length human recombinant protein of human FCGR1A(NP_000557) produced in HEK293T cell.
Formulation:	Lyophilized powder (original buffer 1X PBS, pH 7.3, 8% trehalose)
Reconstitution Method:	For reconstitution, we recommend adding 100uL distilled water to a final antibody concentration of about 1 mg/mL. To use this carrier-free antibody for conjugation experiment, we strongly recommend performing another round of desalting process. (OriGene recommends Zeba Spin Desalting Columns, 7KMWCO from Thermo Scientific)
Purification:	Purified from mouse ascites fluids or tissue culture supernatant by affinity chromatography (protein A/G)
Conjugation:	Unconjugated
Storage:	Store at -20°C as received.
Stability:	Stable for 12 months from date of receipt.
Predicted Protein Size:	42.5 kDa
Gene Name:	Fc fragment of IgG receptor Ia
Database Link:	NP_000557 Entrez Gene 2209 Human P12314
Background:	This gene encodes a protein that plays an important role in the immune response. This protein is a high-affinity Fc-gamma receptor. The gene is one of three related gene family members located on chromosome 1. [provided by RefSeq, Jul 2008]



[View online »](#)

Synonyms: CD64; CD64A; FCRI; IGFR1

Protein Families: Transmembrane

Protein Pathways: Fc gamma R-mediated phagocytosis, Hematopoietic cell lineage, Systemic lupus erythematosus

Product images:

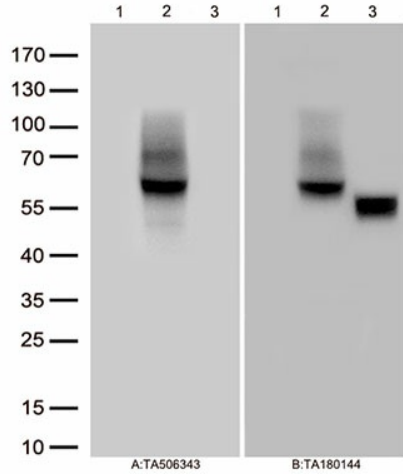
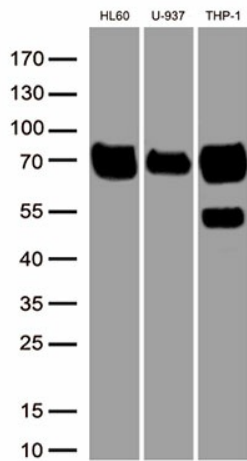
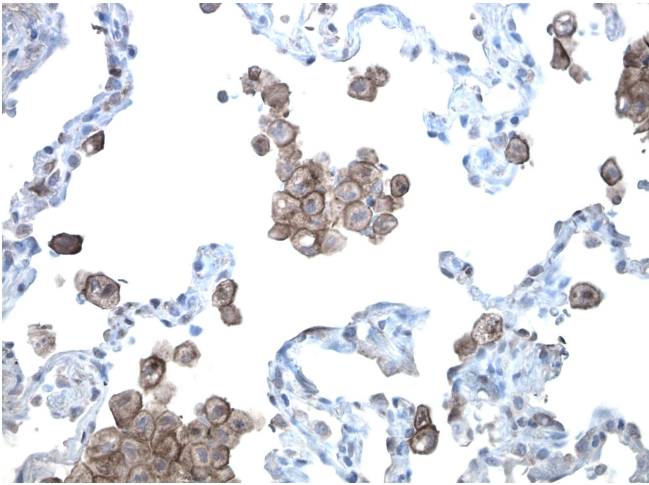


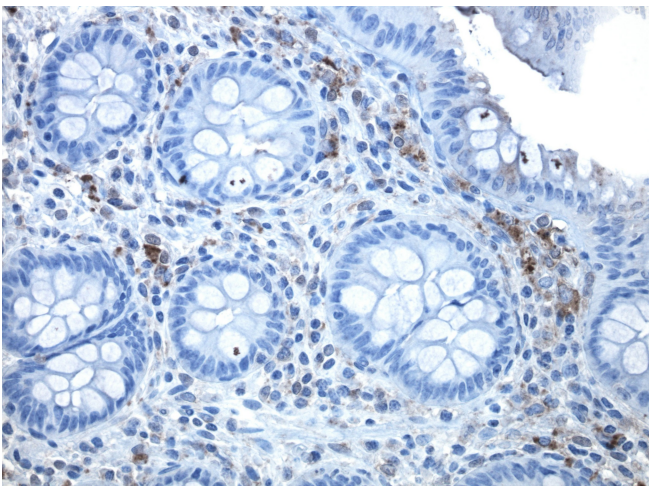
Figure A, Western blot analysis of overexpressed lysates(25ug per lane) from HEK293T cells transfected with empty plasmid ([PS100001], lane 1) , human FCGR1A plasmid ([RC207487], lane 2), rat FCGR1A plasmid ([RR203150], lane 3) using anti-FCGR1A antibody [TA506343] (1:500). Figure B, Western blot analysis of the same samples as figure A with anti-DDK antibody ([TA180144], 1:1000)



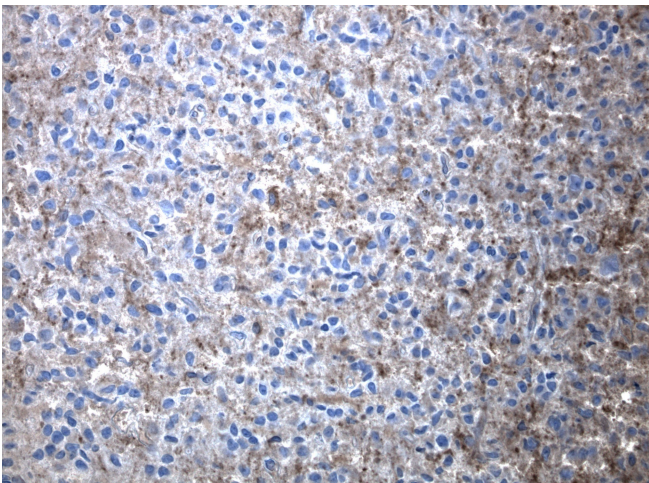
Western blot analysis of extracts (50ug per lane) from 3 cell lines lysates by using anti-FCGR1A monoclonal antibody([TA506343], 1:500)



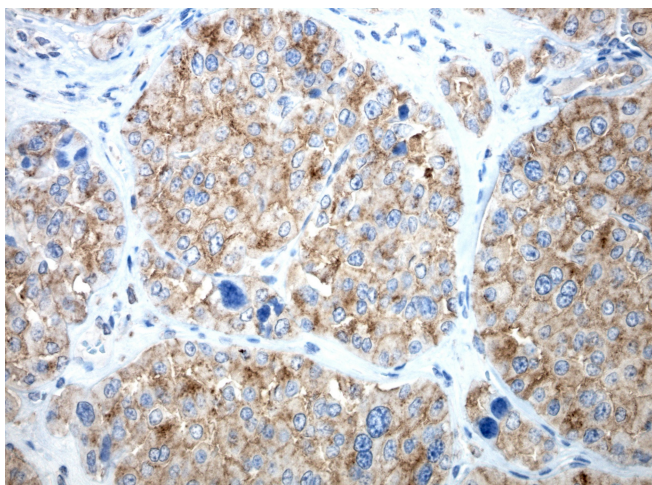
Immunohistochemical staining of paraffin-embedded normal lung showing strong staining on immune cells and weak staining on tumor using anti-FCGR1A antibody [TA506343] clone OTI3D3 mouse monoclonal antibody. Protocol used HIER TEE pH9.0 (cat# [B21-100]) and anti-FCGR1A at 1:50 dilution. Detection was done with Polink1 Broad Mouse and Rabbit C/N [D11-18] with DAB Kit. Image 40x magnification.



Immunohistochemical staining of paraffin-embedded normal appendix using anti-FCGR1A antibody [TA506343] clone OTI3D3 mouse monoclonal antibody. HIER TEE pH9.0 (cat# [B21-100]) and anti-FCGR1A at 1:50 dilution. Detection was done with Polink1 Broad Mouse and Rabbit C/N [D11-18] with DAB Kit. Image 40x magnification.



Immunohistochemical staining of paraffin-embedded glioma using anti-FCGR1A antibody [TA506343] clone OTI3D3 mouse monoclonal antibody. Protocol used HIER TEE pH9.0 (cat# [B21-100]) and anti-FCGR1A at 1:50 dilution. Detection was done with Polink1 Broad Mouse and Rabbit C/N [D11-18] with DAB Kit. Image 40x magnification.



Immunohistochemical staining of paraffin-embedded renal cell carcinoma using anti-FCGR1A antibody [TA506343] clone OTI3D3 mouse monoclonal antibody. Protocol used HIER TEE pH9.0 (cat# [B21-100]) and anti-FCGR1A at 1:50 dilution. Detection was done with Polink1 Broad Mouse and Rabbit C/N [D11-18] with DAB Kit. Image 40x magnification.