

## Product datasheet for **CF506335**

### CD33 Mouse Monoclonal Antibody [Clone ID: OTI1G10]

#### Product data:

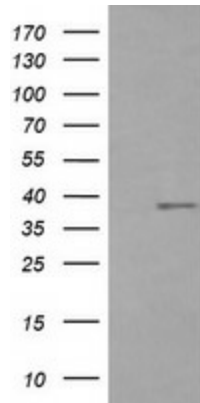
Product Type:	Primary Antibodies
Clone Name:	OTI1G10
Applications:	FC, IF, WB
Recommended Dilution:	WB 1:4000, IF 1:100
Reactivity:	Human
Host:	Mouse
Isotype:	IgG1
Clonality:	Monoclonal
Immunogen:	Full length human recombinant protein of human CD33(NP_001763) produced in HEK293T cell.
Formulation:	Lyophilized powder (original buffer 1X PBS, pH 7.3, 8% trehalose)
Reconstitution Method:	For reconstitution, we recommend adding 100uL distilled water to a final antibody concentration of about 1 mg/mL. To use this carrier-free antibody for conjugation experiment, we strongly recommend performing another round of desalting process. (OriGene recommends Zeba Spin Desalting Columns, 7KMWCO from Thermo Scientific)
Purification:	Purified from mouse ascites fluids or tissue culture supernatant by affinity chromatography (protein A/G)
Conjugation:	Unconjugated
Storage:	Store at -20°C as received.
Stability:	Stable for 12 months from date of receipt.
Predicted Protein Size:	38 kDa
Gene Name:	CD33 molecule
Database Link:	<a href="#">NP_001763</a> <a href="#">Entrez Gene 945 Human</a> <a href="#">P20138</a>
Synonyms:	p67; SIGLEC-3; SIGLEC3
Protein Families:	Druggable Genome, Transmembrane



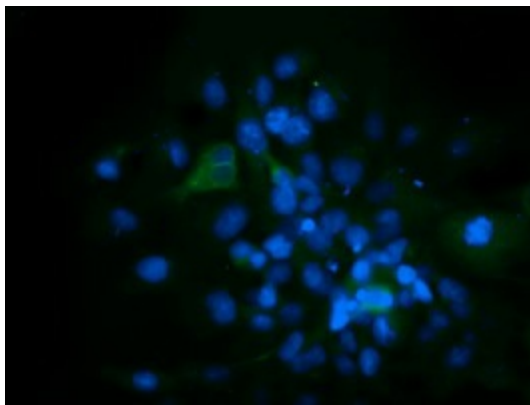
[View online »](#)

Protein Pathways: Hematopoietic cell lineage

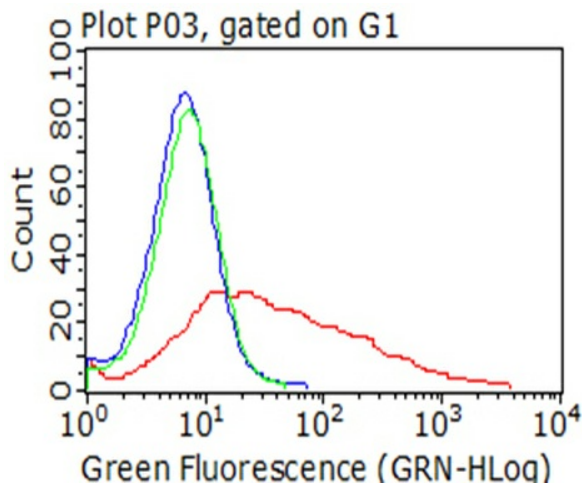
**Product images:**



HEK293T cells were transfected with the pCMV6-ENTRY control (Left lane) or pCMV6-ENTRY CD33 ([RC207023], Right lane) cDNA for 48 hrs and lysed. Equivalent amounts of cell lysates (5 ug per lane) were separated by SDS-PAGE and immunoblotted with anti-CD33. Positive lysates [LY400667] (100ug) and [LC400667] (20ug) can be purchased separately from OriGene.



Anti-CD33 mouse monoclonal antibody ([TA506335]) immunofluorescent staining of COS7 cells transiently transfected by pCMV6-ENTRY CD33 ([RC207023]).



Flow cytometric analysis of living 293T cells transfected with CD33 overexpression plasmid ([RC207023]), Red)/empty vector ([PS100001], Blue) using anti-CD33 antibody ([TA506335]). Cells incubated with a non-specific antibody (Green) were used as isotype control (1:100).