

## Product datasheet for **CF506325**

### **Apc11 (ANAPC11) Mouse Monoclonal Antibody [Clone ID: OTI3C4]**

#### **Product data:**

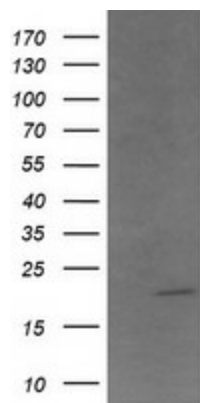
|                                |  |
|--------------------------------|--|
| <b>Product Type:</b>           | Primary Antibodies   |
| <b>Clone Name:</b>             | OTI3C4   |
| <b>Applications:</b>           | IF, IHC, WB  |
| <b>Recommended Dilution:</b>   | WB 1:4000, IHC 1:150, IF 1:100   |
| <b>Reactivity:</b>             | Human, Mouse, Rat  |
| <b>Host:</b>                   | Mouse  |
| <b>Isotype:</b>                | IgG1   |
| <b>Clonality:</b>              | Monoclonal   |
| <b>Immunogen:</b>              | Full length human recombinant protein of human ANAPC11(NP_001002244) produced in HEK293T cell.   |
| <b>Formulation:</b>            | Lyophilized powder (original buffer 1X PBS, pH 7.3, 8% trehalose)  |
| <b>Reconstitution Method:</b>  | For reconstitution, we recommend adding 100uL distilled water to a final antibody concentration of about 1 mg/mL. To use this carrier-free antibody for conjugation experiment, we strongly recommend performing another round of desalting process. (OriGene recommends Zeba Spin Desalting Columns, 7KMWCO from Thermo Scientific) |
| <b>Purification:</b>           | Purified from mouse ascites fluids or tissue culture supernatant by affinity chromatography (protein A/G)  |
| <b>Conjugation:</b>            | Unconjugated   |
| <b>Storage:</b>                | Store at -20°C as received.  |
| <b>Stability:</b>              | Stable for 12 months from date of receipt.   |
| <b>Predicted Protein Size:</b> | 20.5 kDa   |
| <b>Gene Name:</b>              | anaphase promoting complex subunit 11  |
| <b>Database Link:</b>          | <a href="#">NP_001002244</a><br><a href="#">Entrez Gene 66156 Mouse</a> <a href="#">Entrez Gene 498030 Rat</a> <a href="#">Entrez Gene 51529 Human</a><br><a href="#">Q9NYG5</a>   |
| <b>Synonyms:</b>               | APC11; Apc11p; HSPC214   |
| <b>Protein Families:</b>       | Druggable Genome   |



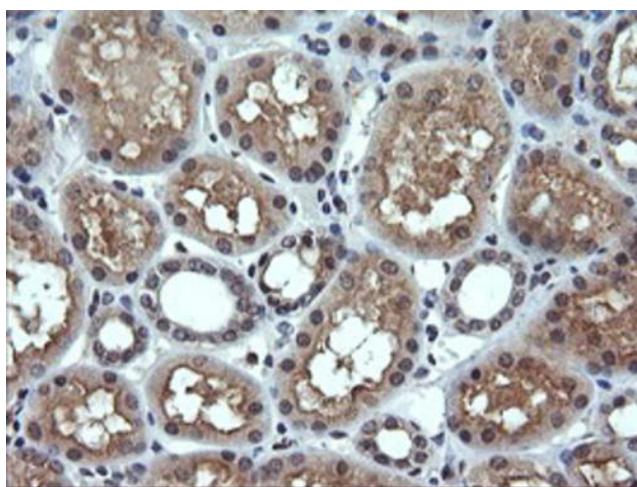
[View online »](#)

**Protein Pathways:** Cell cycle, Oocyte meiosis, Progesterone-mediated oocyte maturation, Ubiquitin mediated proteolysis

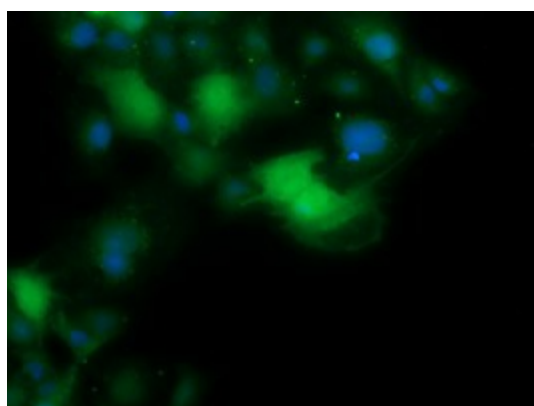
### Product images:



HEK293T cells were transfected with the pCMV6-ENTRY control (Cat# [PS100001], Left lane) or pCMV6-ENTRY ANAPC11 (Cat# [RC200097], Right lane) cDNA for 48 hrs and lysed. Equivalent amounts of cell lysates (5 ug per lane) were separated by SDS-PAGE and immunoblotted with anti-ANAPC11 (Cat# [TA506325]). Positive lysates [LY424181] (100ug) and [LC424181] (20ug) can be purchased separately from OriGene.



Immunohistochemical staining of paraffin-embedded Human Kidney tissue within the normal limits using anti-ANAPC11 mouse monoclonal antibody. Heat-induced epitope retrieval by EDTA solution buffer pH 8.0 at 120°C for 3 min.



Anti-ANAPC11 mouse monoclonal antibody ([TA506325]) immunofluorescent staining of COS7 cells transiently transfected by pCMV6-ENTRY ANAPC11 ([RC200097]).