

## Product datasheet for **CF506300**

### Apc11 (ANAPC11) Mouse Monoclonal Antibody [Clone ID: OTI1B5]

#### Product data:

Product Type:	Primary Antibodies
Clone Name:	OTI1B5
Applications:	IF, WB
Recommended Dilution:	WB 1:2000, IF 1:100
Reactivity:	Human, Mouse, Rat
Host:	Mouse
Isotype:	IgG2a
Clonality:	Monoclonal
Immunogen:	Full length human recombinant protein of human ANAPC11(NP_001002244) produced in HEK293T cell.
Formulation:	Lyophilized powder (original buffer 1X PBS, pH 7.3, 8% trehalose)
Reconstitution Method:	For reconstitution, we recommend adding 100uL distilled water to a final antibody concentration of about 1 mg/mL. To use this carrier-free antibody for conjugation experiment, we strongly recommend performing another round of desalting process. (OriGene recommends Zeba Spin Desalting Columns, 7KMWCO from Thermo Scientific)
Purification:	Purified from mouse ascites fluids or tissue culture supernatant by affinity chromatography (protein A/G)
Conjugation:	Unconjugated
Storage:	Store at -20°C as received.
Stability:	Stable for 12 months from date of receipt.
Predicted Protein Size:	20.5 kDa
Gene Name:	Homo sapiens anaphase promoting complex subunit 11 (ANAPC11), transcript variant 1, mRNA.
Database Link:	<a href="#">NP_001002244</a> <a href="#">Entrez Gene 66156 Mouse</a> <a href="#">Entrez Gene 498030 Rat</a> <a href="#">Entrez Gene 51529 Human</a> <a href="#">Q9NYG5</a>
Synonyms:	APC11; Apc11p; HSPC214

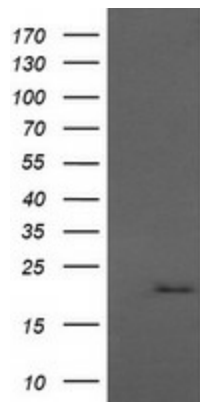


[View online »](#)

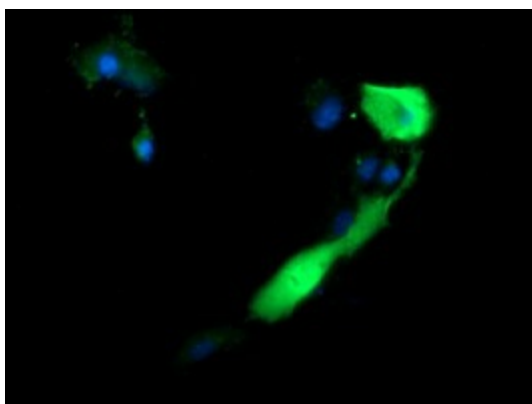
**Protein Families:** Druggable Genome

**Protein Pathways:** Cell cycle, Oocyte meiosis, Progesterone-mediated oocyte maturation, Ubiquitin mediated proteolysis

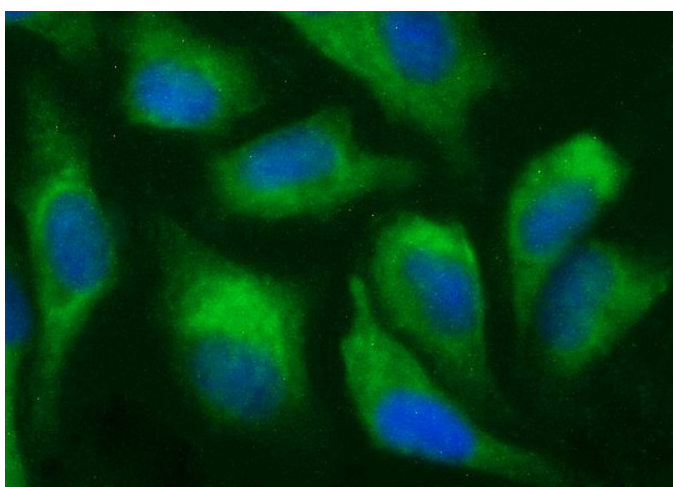
**Product images:**



HEK293T cells were transfected with the pCMV6-ENTRY control (Left lane) or pCMV6-ENTRY ANAPC11 ([RC200097], Right lane) cDNA for 48 hrs and lysed. Equivalent amounts of cell lysates (5 ug per lane) were separated by SDS-PAGE and immunoblotted with anti-ANAPC11. Positive lysates [LY424181] (100ug) and [LC424181] (20ug) can be purchased separately from OriGene.



Anti-ANAPC11 mouse monoclonal antibody ([TA506300]) immunofluorescent staining of COS7 cells transiently transfected by pCMV6-ENTRY ANAPC11 ([RC200097]).



Immunofluorescent staining of HeLa cells using anti-ANAPC11 mouse monoclonal antibody ([TA506300]).