

## Product datasheet for **CF506294**

### CD33 Mouse Monoclonal Antibody [Clone ID: OTI2C1]

#### Product data:

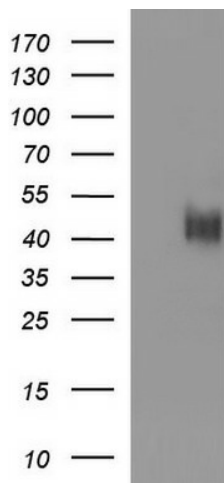
Product Type:	Primary Antibodies
Clone Name:	OTI2C1
Applications:	FC, IHC, WB
Recommended Dilution:	WB 1:2000, IHC 1:150
Reactivity:	Human
Host:	Mouse
Isotype:	IgG1
Clonality:	Monoclonal
Immunogen:	Full length human recombinant protein of human CD33(NP_001763) produced in HEK293T cell.
Formulation:	Lyophilized powder (original buffer 1X PBS, pH 7.3, 8% trehalose)
Reconstitution Method:	For reconstitution, we recommend adding 100uL distilled water to a final antibody concentration of about 1 mg/mL. To use this carrier-free antibody for conjugation experiment, we strongly recommend performing another round of desalting process. (OriGene recommends Zeba Spin Desalting Columns, 7KMWCO from Thermo Scientific)
Purification:	Purified from mouse ascites fluids or tissue culture supernatant by affinity chromatography (protein A/G)
Conjugation:	Unconjugated
Storage:	Store at -20°C as received.
Stability:	Stable for 12 months from date of receipt.
Predicted Protein Size:	38 kDa
Gene Name:	Homo sapiens CD33 molecule (CD33), transcript variant 1, mRNA.
Database Link:	<a href="#">NP_001763</a> <a href="#">Entrez Gene 945 Human</a> <a href="#">P20138</a>
Synonyms:	p67; SIGLEC-3; SIGLEC3
Protein Families:	Druggable Genome, Transmembrane



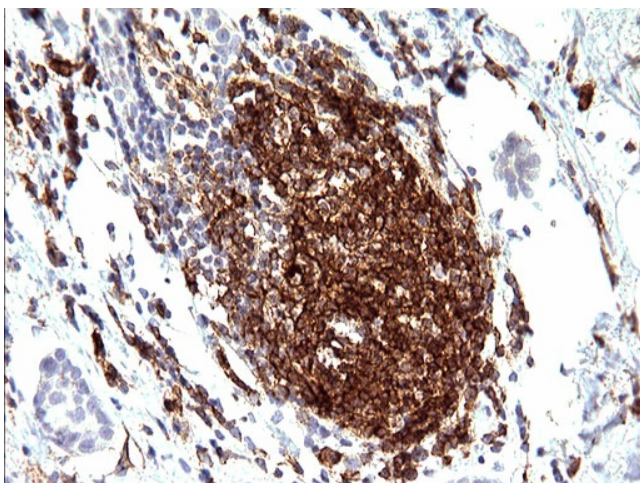
[View online »](#)

Protein Pathways: Hematopoietic cell lineage

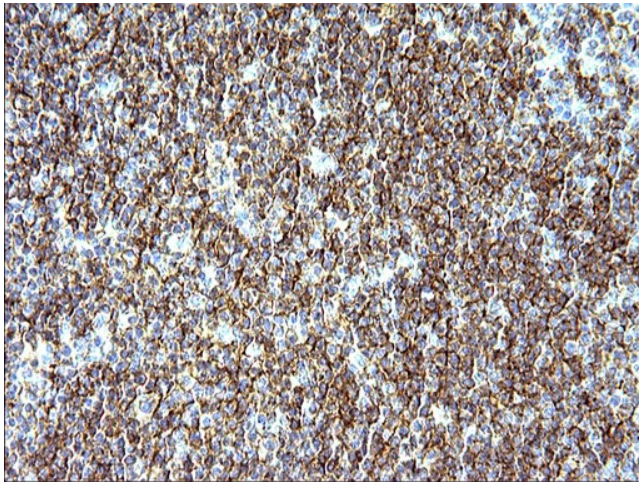
### Product images:



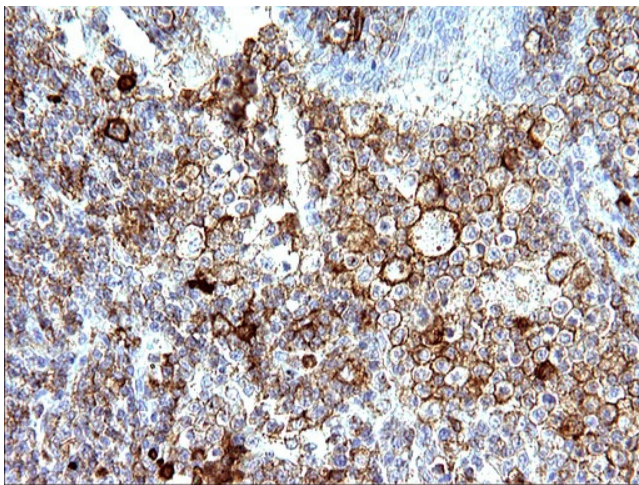
HEK293T cells were transfected with the pCMV6-ENTRY control (Cat# [PS100001], Left lane) or pCMV6-ENTRY CD33 (Cat# [RC207023], Right lane) cDNA for 48 hrs and lysed. Equivalent amounts of cell lysates (5 ug per lane) were separated by SDS-PAGE and immunoblotted with anti-CD33 (Cat# [TA506294]). Positive lysates [LY400667] (100ug) and [LC400667] (20ug) can be purchased separately from OriGene.



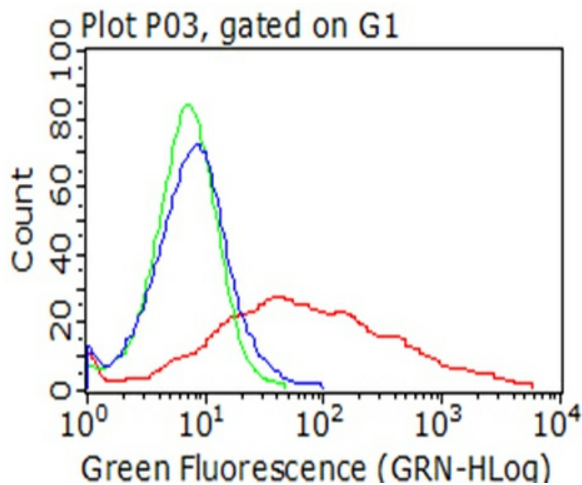
Immunohistochemical staining of paraffin-embedded Adenocarcinoma of Human breast tissue using anti-CD33 mouse monoclonal antibody. (Heat-induced epitope retrieval by 10mM citric buffer, pH6.0, 120°C for 3min, [TA506294])



Immunohistochemical staining of paraffin-embedded Human lymph node tissue within the normal limits using anti-CD33 mouse monoclonal antibody. (Heat-induced epitope retrieval by 10mM citric buffer, pH6.0, 120°C for 3min, [TA506294])



Immunohistochemical staining of paraffin-embedded Human lymphoma tissue using anti-CD33 mouse monoclonal antibody. (Heat-induced epitope retrieval by 10mM citric buffer, pH6.0, 120°C for 3min, [TA506294])



Flow cytometric analysis of living 293T cells transfected with CD33 overexpression plasmid ([RC207023]), Red)/empty vector ([PS100001], Blue) using anti-CD33 antibody ([TA506294]). Cells incubated with a non-specific antibody (Green) were used as isotype control (1:100).