

Product datasheet for **CF506234**

CD19 Mouse Monoclonal Antibody [Clone ID: OTI3G7]

Product data:

Product Type:	Primary Antibodies
Clone Name:	OTI3G7
Applications:	FC, IF, IHC, WB
Recommended Dilution:	WB 1:4000, IHC 1:150, IF 1:100, FLOW 1:50
Reactivity:	Human
Host:	Mouse
Isotype:	IgG1
Clonality:	Monoclonal
Immunogen:	Full length human recombinant protein of human CD19(NP_001761) produced in HEK293T cell.
Formulation:	Lyophilized powder (original buffer 1X PBS, pH 7.3, 8% trehalose)
Reconstitution Method:	For reconstitution, we recommend adding 100uL distilled water to a final antibody concentration of about 1 mg/mL. To use this carrier-free antibody for conjugation experiment, we strongly recommend performing another round of desalting process. (OriGene recommends Zeba Spin Desalting Columns, 7KMWCO from Thermo Scientific)
Purification:	Purified from mouse ascites fluids or tissue culture supernatant by affinity chromatography (protein A/G)
Conjugation:	Unconjugated
Storage:	Store at -20°C as received.
Stability:	Stable for 12 months from date of receipt.
Predicted Protein Size:	60.9 kDa
Gene Name:	CD19 molecule
Database Link:	NP_001761 Entrez Gene 930 Human P15391



[View online »](#)

Background:

Lymphocytes proliferate and differentiate in response to various concentrations of different antigens. The ability of the B cell to respond in a specific, yet sensitive manner to the various antigens is achieved with the use of low-affinity antigen receptors. This gene encodes a cell surface molecule which assembles with the antigen receptor of B lymphocytes in order to decrease the threshold for antigen receptor-dependent stimulation. [provided by RefSeq, Jul 2008]

Synonyms:

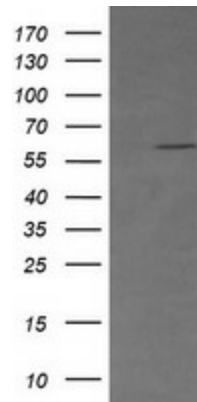
B4; CVID3

Protein Families:

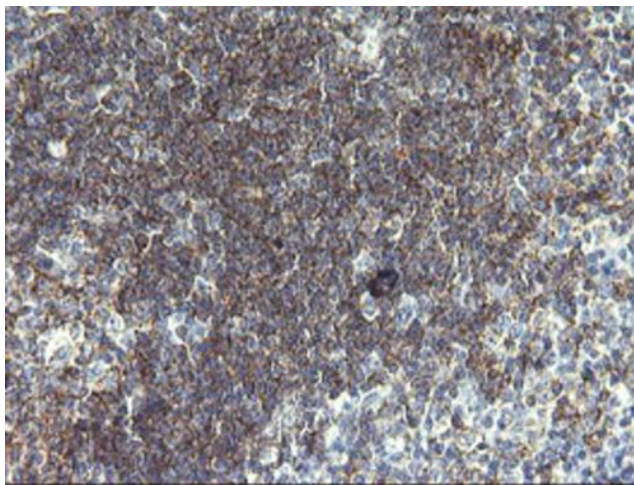
Druggable Genome, Transmembrane

Protein Pathways:

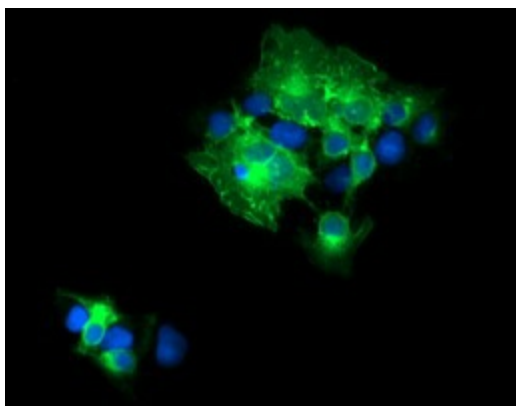
B cell receptor signaling pathway, Hematopoietic cell lineage, Primary immunodeficiency

Product images:


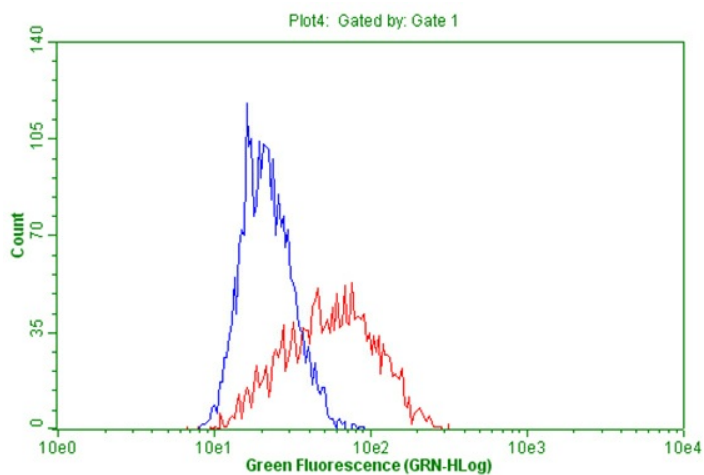
HEK293T cells were transfected with the pCMV6-ENTRY control (Left lane) or pCMV6-ENTRY CD19 ([RC202922], Right lane) cDNA for 48 hrs and lysed. Equivalent amounts of cell lysates (5 ug per lane) were separated by SDS-PAGE and immunoblotted with anti-CD19. Positive lysates [LY400678] (100ug) and [LC400678] (20ug) can be purchased separately from OriGene.



Immunohistochemical staining of paraffin-embedded Human tonsil within the normal limits using anti-CD19 mouse monoclonal antibody. ([TA506234]; heat-induced epitope retrieval by 1mM EDTA in 10mM Tris, pH8.5, 120°C for 3min)



Anti-CD19 mouse monoclonal antibody ([TA506234]) immunofluorescent staining of COS7 cells transiently transfected by pCMV6-ENTRY CD19 ([RC202922]).



Flow cytometric Analysis of living K562 cells, using anti-CD19 antibody ([TA506234]), (Red), compared to a nonspecific negative control antibody, (Blue).