

## Product datasheet for **CF506230**

### PDGF Receptor beta (PDGFRB) Mouse Monoclonal Antibody [Clone ID: OTI1E8]

#### Product data:

|                        |  |
|------------------------|--|
| Product Type:          | Primary Antibodies   |
| Clone Name:            | OTI1E8   |
| Applications:          | IF, IHC, WB  |
| Recommended Dilution:  | WB 1:4000, IHC 1:150, IF 1:100   |
| Reactivity:            | Human, Mouse, Rat  |
| Host:                  | Mouse  |
| Isotype:               | IgG1   |
| Clonality:             | Monoclonal   |
| Immunogen:             | Full length human recombinant protein of human PDGFRB(NP_002600) produced in HEK293T cell.   |
| Formulation:           | Lyophilized powder (original buffer 1X PBS, pH 7.3, 8% trehalose)  |
| Reconstitution Method: | For reconstitution, we recommend adding 100uL distilled water to a final antibody concentration of about 1 mg/mL. To use this carrier-free antibody for conjugation experiment, we strongly recommend performing another round of desalting process. (OriGene recommends Zeba Spin Desalting Columns, 7KMWCO from Thermo Scientific) |
| Purification:          | Purified from mouse ascites fluids or tissue culture supernatant by affinity chromatography (protein A/G)  |
| Conjugation:           | Unconjugated   |
| Storage:               | Store at -20°C as received.  |
| Stability:             | Stable for 12 months from date of receipt.   |
| Gene Name:             | platelet derived growth factor receptor beta   |
| Database Link:         | <a href="#">NP_002600</a><br><a href="#">Entrez Gene 18596 Mouse</a> <a href="#">Entrez Gene 24629 Rat</a> <a href="#">Entrez Gene 5159 Human</a><br><a href="#">P09619</a>  |



[View online »](#)

**Background:**

This gene encodes a cell surface tyrosine kinase receptor for members of the platelet-derived growth factor family. These growth factors are mitogens for cells of mesenchymal origin. The identity of the growth factor bound to a receptor monomer determines whether the functional receptor is a homodimer or a heterodimer, composed of both platelet-derived growth factor receptor alpha and beta polypeptides. This gene is flanked on chromosome 5 by the genes for granulocyte-macrophage colony-stimulating factor and macrophage-colony stimulating factor receptor; all three genes may be implicated in the 5-q syndrome. A translocation between chromosomes 5 and 12, that fuses this gene to that of the translocation, ETV6, leukemia gene, results in chronic myeloproliferative disorder with eosinophilia. [provided by RefSeq, Jul 2008]

**Synonyms:**

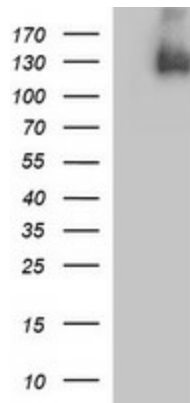
CD140B; IBGC4; IMF1; JTK12; PDGFR; PDGFR-1; PDGFR1

**Protein Families:**

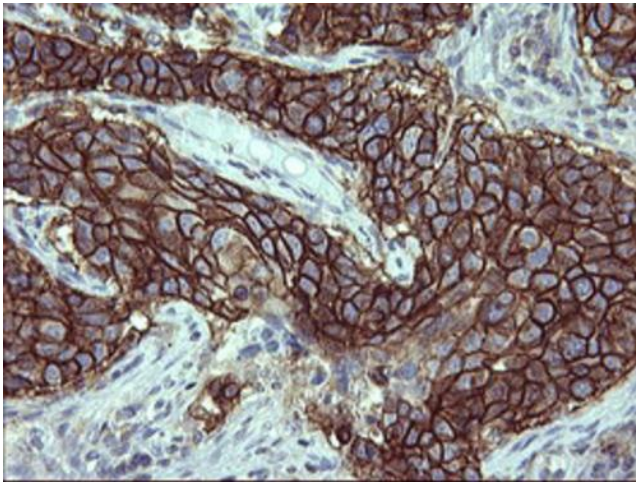
Druggable Genome, ES Cell Differentiation/IPS, Protein Kinase, Transmembrane

**Protein Pathways:**

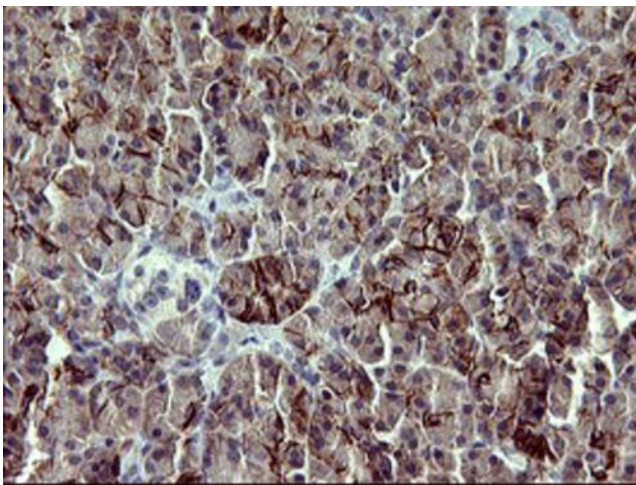
Calcium signaling pathway, Colorectal cancer, Cytokine-cytokine receptor interaction, Focal adhesion, Gap junction, Glioma, MAPK signaling pathway, Melanoma, Pathways in cancer, Prostate cancer, Regulation of actin cytoskeleton

**Product images:**

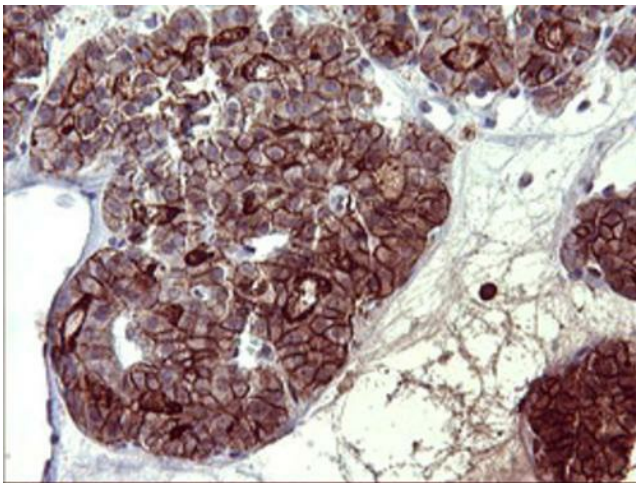
HEK293T cells were transfected with the pCMV6-ENTRY control (Cat# [PS100001], Left lane) or pCMV6-ENTRY PDGFRB (Cat# [RC206377], Right lane) cDNA for 48 hrs and lysed. Equivalent amounts of cell lysates (5 ug per lane) were separated by SDS-PAGE and immunoblotted with anti-PDGFRB (Cat# [TA506230]). Positive lysates [LY400921] (100ug) and [LC400921] (20ug) can be purchased separately from OriGene.



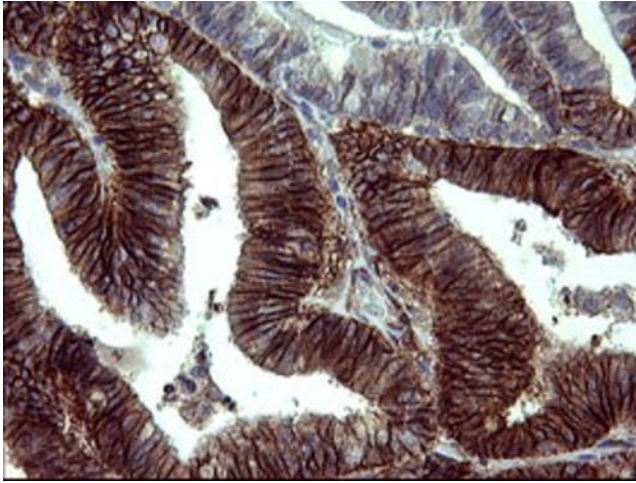
Immunohistochemical staining of paraffin-embedded Carcinoma of Human lung tissue using anti-PDGFRB mouse monoclonal antibody. Heat-induced epitope retrieval by EDTA solution buffer pH 8.0 at 120°C for 3 min.



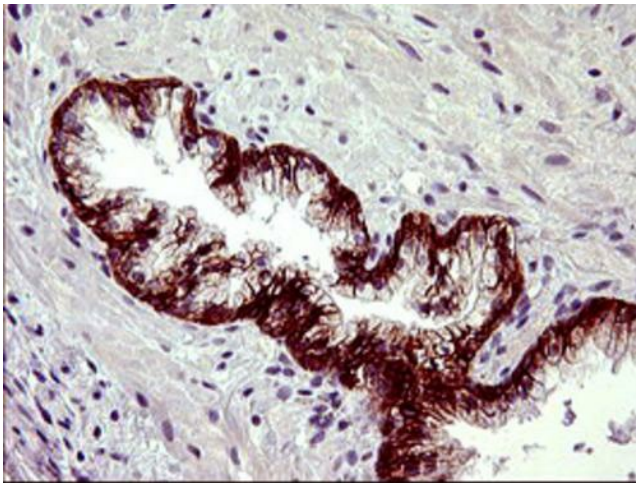
Immunohistochemical staining of paraffin-embedded Human pancreas tissue within the normal limits using anti-PDGFRB mouse monoclonal antibody. Heat-induced epitope retrieval by EDTA solution buffer pH 8.0 at 120°C for 3 min.



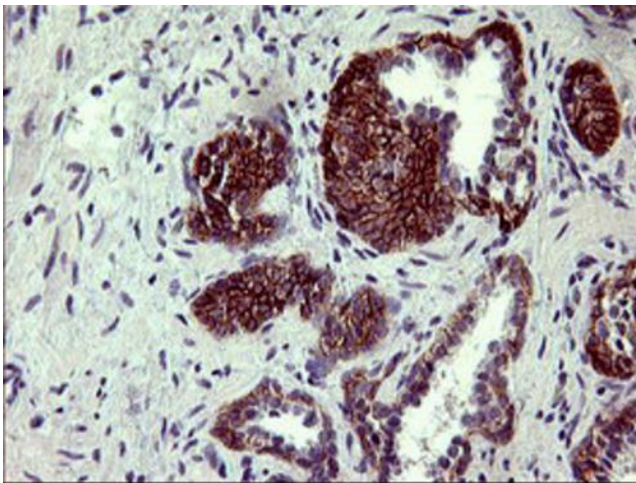
Immunohistochemical staining of paraffin-embedded Carcinoma of Human thyroid tissue using anti-PDGFRB mouse monoclonal antibody. Heat-induced epitope retrieval by EDTA solution buffer pH 8.0 at 120°C for 3 min.



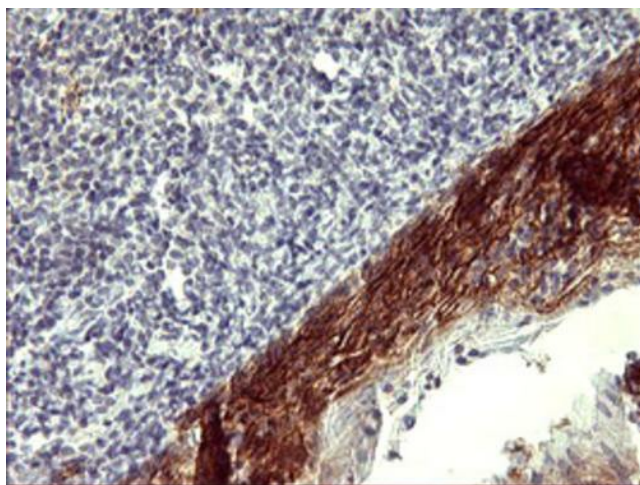
Immunohistochemical staining of paraffin-embedded Adenocarcinoma of Human endometrium tissue using anti-PDGFRB mouse monoclonal antibody. Heat-induced epitope retrieval by EDTA solution buffer pH 8.0 at 120°C for 3 min.



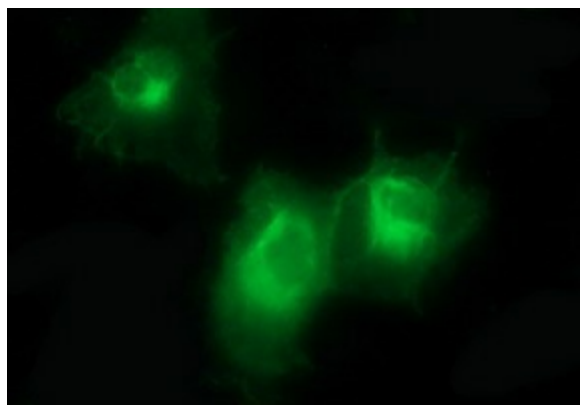
Immunohistochemical staining of paraffin-embedded Human prostate tissue within the normal limits using anti-PDGFRB mouse monoclonal antibody. Heat-induced epitope retrieval by EDTA solution buffer pH 8.0 at 120°C for 3 min.



Immunohistochemical staining of paraffin-embedded Carcinoma of Human prostate tissue using anti-PDGFRB mouse monoclonal antibody. Heat-induced epitope retrieval by EDTA solution buffer pH 8.0 at 120°C for 3 min.



Immunohistochemical staining of paraffin-embedded Human lymph node tissue within the normal limits using anti-PDGFRB mouse monoclonal antibody. Heat-induced epitope retrieval by EDTA solution buffer pH 8.0 at 120°C for 3 min.



Anti-PDGFRB mouse monoclonal antibody ([TA506230]) immunofluorescent staining of COS7 cells transiently transfected by pCMV6-ENTRY PDGFRB ([RC206377]).