

## Product datasheet for **CF506196**

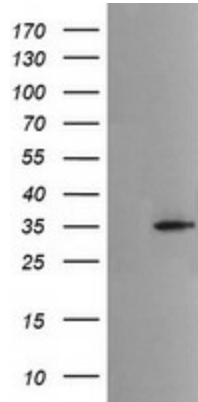
### MSI2 Mouse Monoclonal Antibody [Clone ID: OTI2F10]

#### Product data:

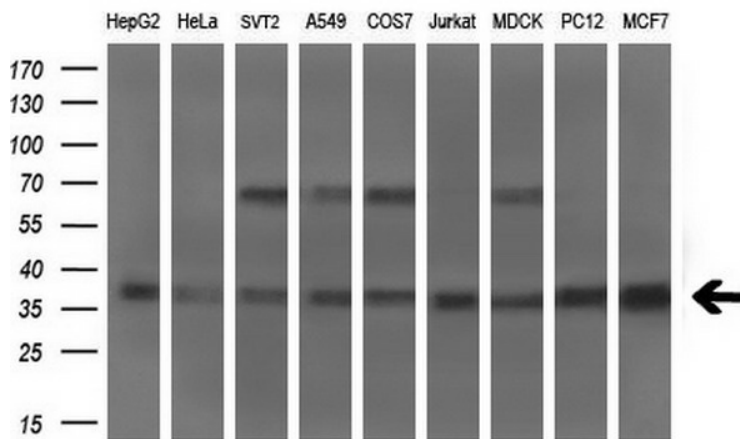
Product Type:	Primary Antibodies
Clone Name:	OTI2F10
Applications:	IF, IHC, WB
Recommended Dilution:	WB: 1:200 - 1:1000, IHC 1:150, IF 1:100
Reactivity:	Human, Mouse, Rat
Host:	Mouse
Isotype:	IgG1
Clonality:	Monoclonal
Immunogen:	Full length human recombinant protein of human MSI2(NP_620412) produced in HEK293T cell.
Formulation:	Lyophilized powder (original buffer 1X PBS, pH 7.3, 8% trehalose)
Reconstitution Method:	For reconstitution, we recommend adding 100uL distilled water to a final antibody concentration of about 1 mg/mL. To use this carrier-free antibody for conjugation experiment, we strongly recommend performing another round of desalting process. (OriGene recommends Zeba Spin Desalting Columns, 7KMWCO from Thermo Scientific)
Purification:	Purified from mouse ascites fluids or tissue culture supernatant by affinity chromatography (protein A/G)
Conjugation:	Unconjugated
Storage:	Store at -20°C as received.
Stability:	Stable for 12 months from date of receipt.
Predicted Protein Size:	35 kDa
Gene Name:	musashi RNA binding protein 2
Database Link:	<a href="#">NP_620412</a> <a href="#">Entrez Gene 76626 Mouse</a> <a href="#">Entrez Gene 360596 Rat</a> <a href="#">Entrez Gene 124540 Human</a> <a href="#">Q96DH6</a>
Synonyms:	MSI2H



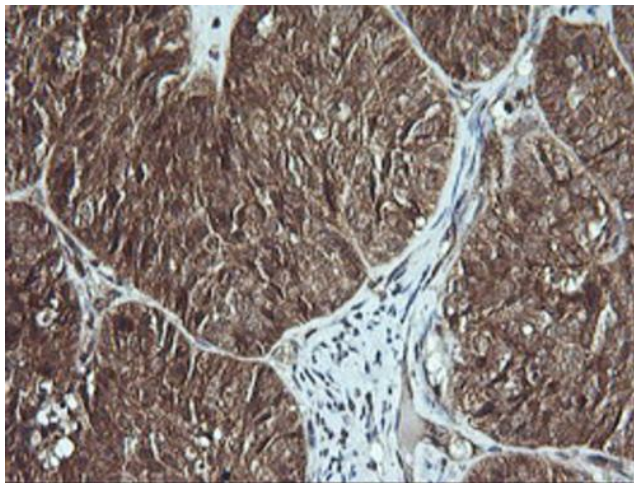
[View online »](#)

**Product images:**


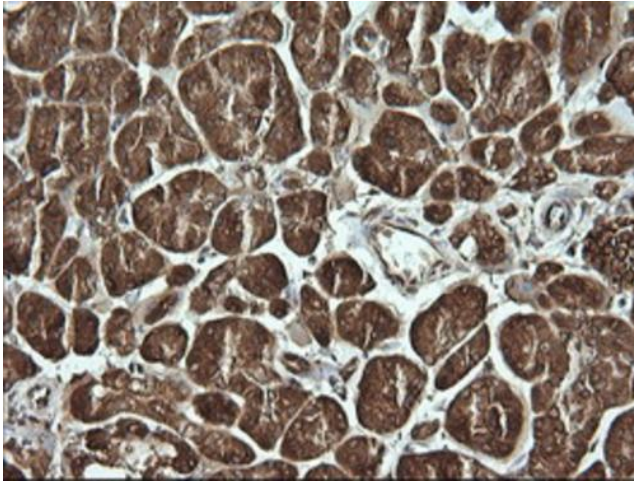
HEK293T cells were transfected with the pCMV6-ENTRY control (Cat# [PS100001], Left lane) or pCMV6-ENTRY MSI2 (Cat# [RC201003], Right lane) cDNA for 48 hrs and lysed. Equivalent amounts of cell lysates (5 ug per lane) were separated by SDS-PAGE and immunoblotted with anti-MSI2 (Cat# [TA506196]). Positive lysates [LY403371] (100ug) and [LC403371] (20ug) can be purchased separately from OriGene.



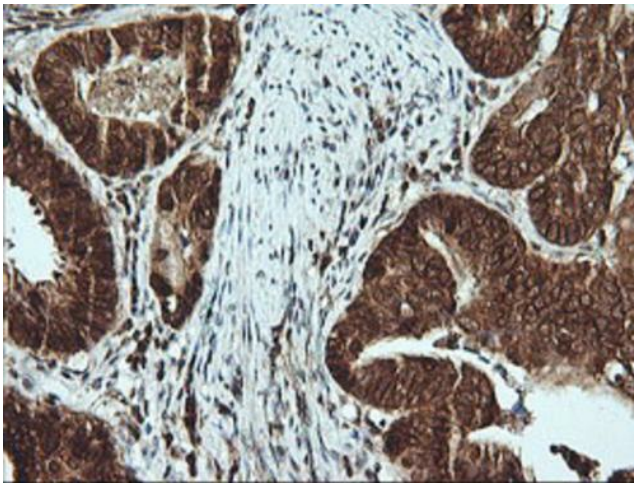
Western blot analysis of extracts (35ug) from 9 different cell lines by using anti-MSI2 monoclonal antibody (HepG2: human; HeLa: human; SVT2: mouse; A549: human; COS7: monkey; Jurkat: human; MDCK: canine; PC12: rat; MCF7: human) (1:200).



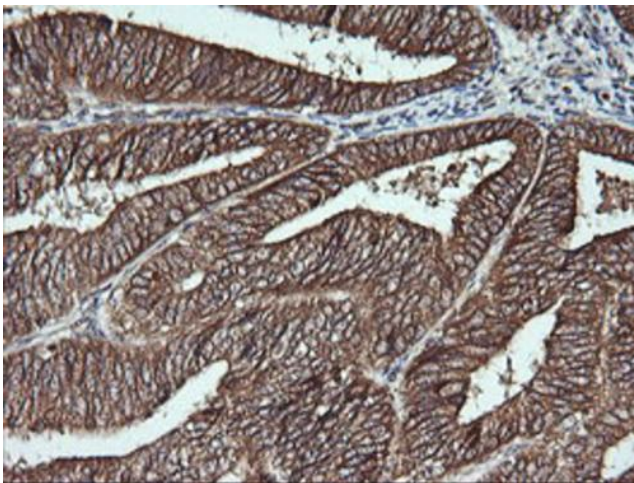
Immunohistochemical staining of paraffin-embedded Adenocarcinoma of Human ovary tissue using anti-MSI2 mouse monoclonal antibody. (Heat-induced epitope retrieval by 10mM citric buffer, pH6.0, 120°C for 3min, [TA506196])



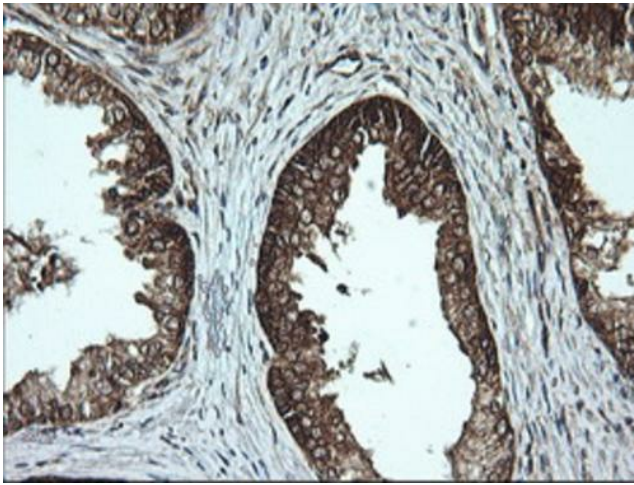
Immunohistochemical staining of paraffin-embedded Human pancreas tissue within the normal limits using anti-MSI2 mouse monoclonal antibody. (Heat-induced epitope retrieval by 10mM citric buffer, pH6.0, 120°C for 3min, [TA506196])



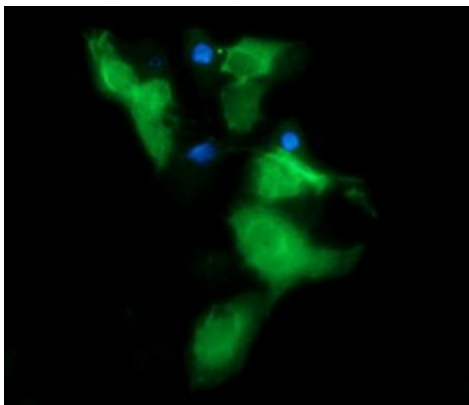
Immunohistochemical staining of paraffin-embedded Carcinoma of Human pancreas tissue using anti-MSI2 mouse monoclonal antibody. (Heat-induced epitope retrieval by 10mM citric buffer, pH6.0, 120°C for 3min, [TA506196])



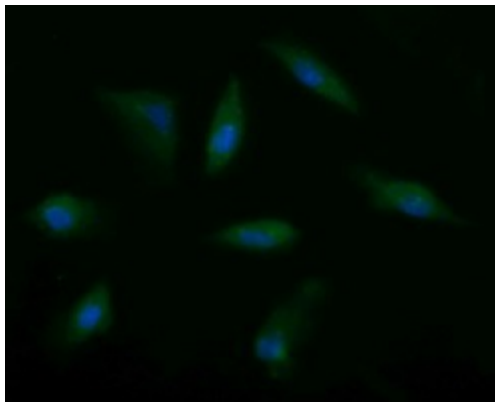
Immunohistochemical staining of paraffin-embedded Adenocarcinoma of Human endometrium tissue using anti-MSI2 mouse monoclonal antibody. (Heat-induced epitope retrieval by 10mM citric buffer, pH6.0, 120°C for 3min, [TA506196])



Immunohistochemical staining of paraffin-embedded Human prostate tissue within the normal limits using anti-MSI2 mouse monoclonal antibody. (Heat-induced epitope retrieval by 10mM citric buffer, pH6.0, 120°C for 3min, [TA506196])



Anti-MSI2 mouse monoclonal antibody ([TA506196]) immunofluorescent staining of COS7 cells transiently transfected by pCMV6-ENTRY MSI2 ([RC201003]).



Immunofluorescent staining of HeLa cells using anti-MSI2 mouse monoclonal antibody ([TA506196]).