

Product datasheet for **CF506171**

Kallikrein 8 (KLK8) Mouse Monoclonal Antibody [Clone ID: OTI2C6]

Product data:

Product Type:	Primary Antibodies
Clone Name:	OTI2C6
Applications:	IF, IHC, WB
Recommended Dilution:	WB 1:200~4000, IHC 1:150, IF 1:100
Reactivity:	Human, Dog, Monkey
Host:	Mouse
Isotype:	IgG2a
Clonality:	Monoclonal
Immunogen:	Full length human recombinant protein of human KLK8(NP_009127) produced in HEK293T cell.
Formulation:	Lyophilized powder (original buffer 1X PBS, pH 7.3, 8% trehalose)
Reconstitution Method:	For reconstitution, we recommend adding 100uL distilled water to a final antibody concentration of about 1 mg/mL. To use this carrier-free antibody for conjugation experiment, we strongly recommend performing another round of desalting process. (OriGene recommends Zeba Spin Desalting Columns, 7KMWCO from Thermo Scientific)
Purification:	Purified from mouse ascites fluids or tissue culture supernatant by affinity chromatography (protein A/G)
Conjugation:	Unconjugated
Storage:	Store at -20°C as received.
Stability:	Stable for 12 months from date of receipt.
Predicted Protein Size:	27.9 kDa
Gene Name:	kallikrein related peptidase 8
Database Link:	NP_009127 Entrez Gene 484352 Dog Entrez Gene 719488 Monkey Entrez Gene 11202 Human O60259



[View online »](#)

Background:

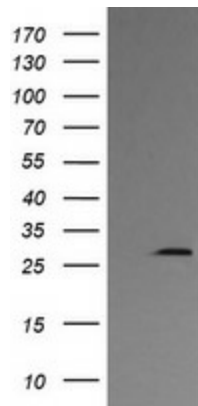
Kallikreins are a subgroup of serine proteases having diverse physiological functions. Growing evidence suggests that many kallikreins are implicated in carcinogenesis and some have potential as novel cancer and other disease biomarkers. This gene is one of the fifteen kallikrein subfamily members located in a cluster on chromosome 19. Alternate splicing of this gene results in four transcript variants encoding four different isoforms. The isoforms exhibit distinct patterns of expression that suggest roles in brain plasticity and ovarian cancer. [provided by RefSeq, Jul

Synonyms:

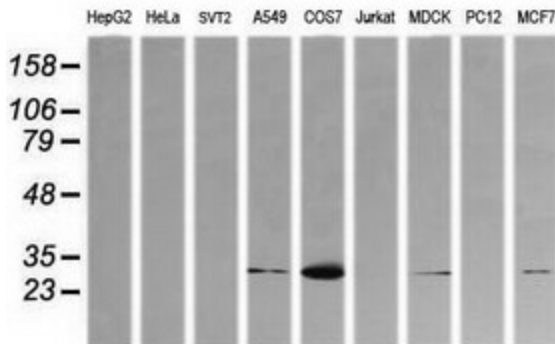
HNP; NP; NRPN; PRSS19; TADG14

Protein Families:

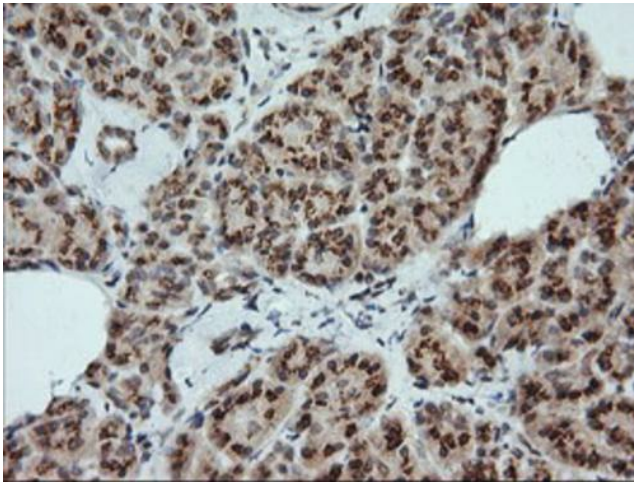
Druggable Genome, Secreted Protein, Transmembrane

Product images:


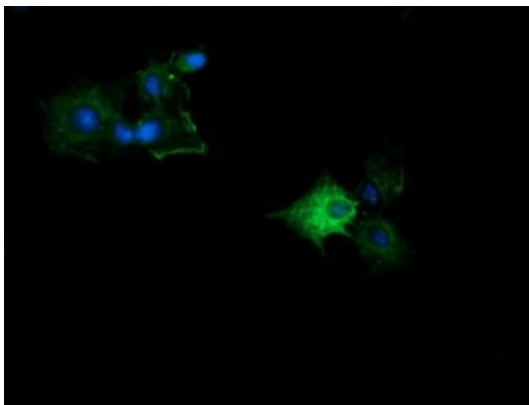
HEK293T cells were transfected with the pCMV6-ENTRY control (Left lane) or pCMV6-ENTRY KLK8 ([RC208152], Right lane) cDNA for 48 hrs and lysed. Equivalent amounts of cell lysates (5 ug per lane) were separated by SDS-PAGE and immunoblotted with anti-KLK8. Positive lysates [LY416130] (100ug) and [LC416130] (20ug) can be purchased separately from OriGene.



Western blot analysis of extracts (35ug) from 9 different cell lines by using anti-KLK8 monoclonal antibody (HepG2: human; HeLa: human; SVT2: mouse; A549: human; COS7: monkey; Jurkat: human; MDCK: canine; PC12: rat; MCF7: human).



Immunohistochemical staining of paraffin-embedded Human pancreas tissue within the normal limits using anti-KLK8 mouse monoclonal antibody. (Heat-induced epitope retrieval by 10mM citric buffer, pH6.0, 120°C for 3min, [TA506171])



Anti-KLK8 mouse monoclonal antibody ([TA506171]) immunofluorescent staining of COS7 cells transiently transfected by pCMV6-ENTRY KLK8 ([RC208152]).