

## Product datasheet for **CF506017**

### Junctional Adhesion Molecule 1 (F11R) Mouse Monoclonal Antibody [Clone ID: OTI3H3]

#### Product data:

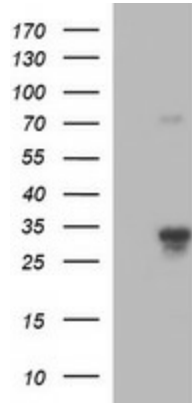
Product Type:	Primary Antibodies
Clone Name:	OTI3H3
Applications:	IF, IHC, WB
Recommended Dilution:	WB 1:4000, IHC 1:150, IF 1:100
Reactivity:	Human
Host:	Mouse
Isotype:	IgG2b
Clonality:	Monoclonal
Immunogen:	Full length human recombinant protein of human F11R(NP_653087) produced in HEK293T cell.
Formulation:	Lyophilized powder (original buffer 1X PBS, pH 7.3, 8% trehalose)
Reconstitution Method:	For reconstitution, we recommend adding 100uL distilled water to a final antibody concentration of about 1 mg/mL. To use this carrier-free antibody for conjugation experiment, we strongly recommend performing another round of desalting process. (OriGene recommends Zeba Spin Desalting Columns, 7KMWCO from Thermo Scientific)
Purification:	Purified from mouse ascites fluids or tissue culture supernatant by affinity chromatography (protein A/G)
Conjugation:	Unconjugated
Storage:	Store at -20°C as received.
Stability:	Stable for 12 months from date of receipt.
Predicted Protein Size:	29.8 kDa
Gene Name:	F11 receptor
Database Link:	<a href="#">NP_653087</a> <a href="#">Entrez Gene 50848 Human</a> <a href="#">Q9Y624</a>
Synonyms:	JAM, KAT, JAM1, JAMA, JCAM, CD321, JAM-1, JAM-A, PAM-1
Protein Families:	Druggable Genome, Transmembrane



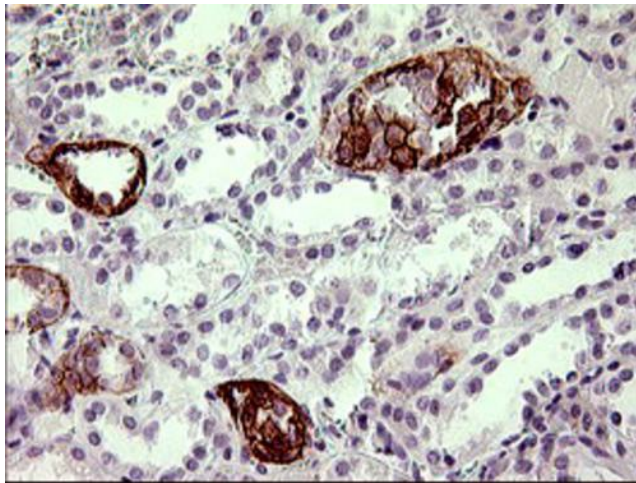
[View online »](#)

**Protein Pathways:** Cell adhesion molecules (CAMs), Epithelial cell signaling in Helicobacter pylori infection, Leukocyte transendothelial migration, Tight junction

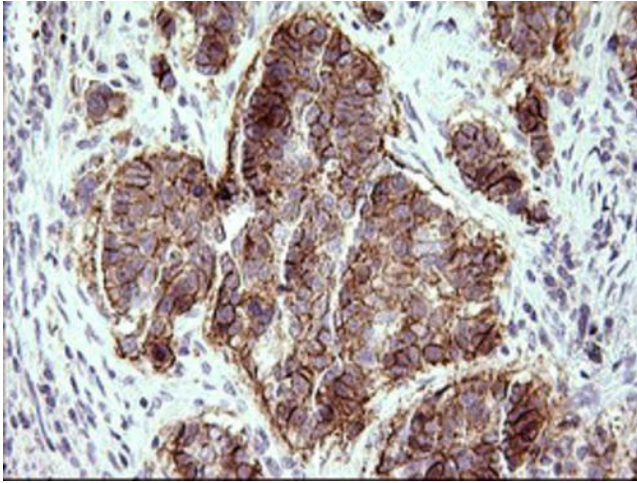
**Product images:**



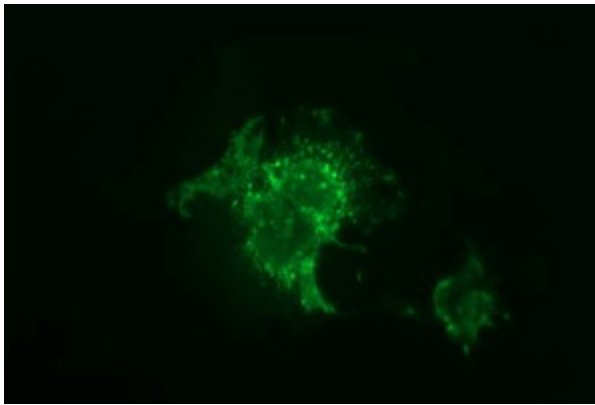
HEK293T cells were transfected with the pCMV6-ENTRY control (Cat# [PS100001], Left lane) or pCMV6-ENTRY F11R (Cat# [RC200004], Right lane) cDNA for 48 hrs and lysed. Equivalent amounts of cell lysates (5 ug per lane) were separated by SDS-PAGE and immunoblotted with anti-F11R antibody (Cat# [TA506017]). Positive lysates [LY403392] (100ug) and [LC403392] (20ug) can be purchased separately from OriGene.



Immunohistochemical staining of paraffin-embedded Human Kidney tissue within the normal limits using anti-F11R mouse monoclonal antibody. (Heat-induced epitope retrieval by 10mM citric buffer, pH6.0, 120°C for 3min, [TA506017])



Immunohistochemical staining of paraffin-embedded Carcinoma of Human lung tissue using anti-F11R mouse monoclonal antibody. (Heat-induced epitope retrieval by 10mM citric buffer, pH6.0, 120°C for 3min, [TA506017])



Anti-F11R mouse monoclonal antibody ([TA506017]) immunofluorescent staining of COS7 cells transiently transfected by pCMV6-ENTRY F11R ([RC200004]).