

## Product datasheet for **CF505976**

### TRIM38 Mouse Monoclonal Antibody [Clone ID: OTI15H4]

#### Product data:

Product Type:	Primary Antibodies
Clone Name:	OTI15H4
Applications:	IF, WB
Recommended Dilution:	WB 1:200, IF 1:100
Reactivity:	Human, Monkey, Mouse
Host:	Mouse
Isotype:	IgG1
Clonality:	Monoclonal
Immunogen:	Human recombinant protein fragment corresponding to amino acids 1-265 of human TRIM38(NP_006346) produced in E.coli.
Formulation:	Lyophilized powder (original buffer 1X PBS, pH 7.3, 8% trehalose)
Reconstitution Method:	For reconstitution, we recommend adding 100uL distilled water to a final antibody concentration of about 1 mg/mL. To use this carrier-free antibody for conjugation experiment, we strongly recommend performing another round of desalting process. (OriGene recommends Zeba Spin Desalting Columns, 7KMWCO from Thermo Scientific)
Purification:	Purified from mouse ascites fluids or tissue culture supernatant by affinity chromatography (protein A/G)
Conjugation:	Unconjugated
Storage:	Store at -20°C as received.
Stability:	Stable for 12 months from date of receipt.
Predicted Protein Size:	53.2 kDa
Gene Name:	tripartite motif containing 38
Database Link:	<a href="#">NP_006346</a> <a href="#">Entrez Gene 214158 Mouse</a> <a href="#">Entrez Gene 694861 Monkey</a> <a href="#">Entrez Gene 10475 Human</a> <a href="#">O00635</a>



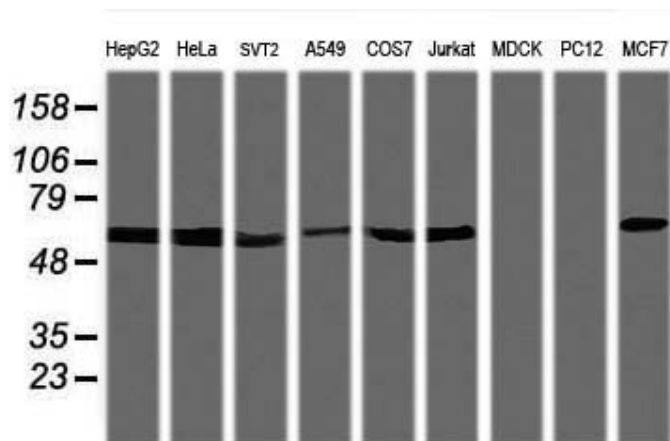
[View online »](#)

**Background:** This gene encodes a member of the tripartite motif (TRIM) family. The encoded protein contains a RING-type zinc finger, B box-type zinc finger and SPRY domain. The function of this protein has not been identified. A pseudogene of this gene is located on the long arm of chromosome 4. [provided by RefSeq, Jul 2012]

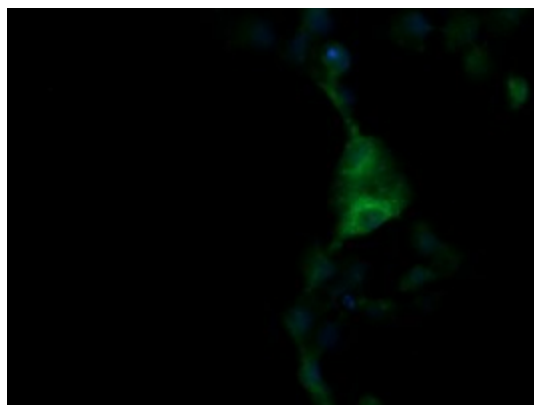
**Synonyms:** RNF15; RORET

**Protein Families:** Druggable Genome

**Product images:**



Western blot analysis of extracts (35ug) from 9 different cell lines by using anti-TRIM38 monoclonal antibody (HepG2: human; HeLa: human; SVT2: mouse; A549: human; COS7: monkey; Jurkat: human; MDCK: canine; PC12: rat; MCF7: human).



Anti-TRIM38 mouse monoclonal antibody ([TA505976]) immunofluorescent staining of COS7 cells transiently transfected by pCMV6-ENTRY TRIM38 ([RC201944]).