

## Product datasheet for **CF505975**

### **NY-ESO-1 (CTAG1B) Mouse Monoclonal Antibody [Clone ID: OTI9E7]**

#### **Product data:**

<b>Product Type:</b>	Primary Antibodies
<b>Clone Name:</b>	OTI9E7
<b>Applications:</b>	FC, IF, WB
<b>Recommended Dilution:</b>	WB 1:4000, IF 1:100
<b>Reactivity:</b>	Human
<b>Host:</b>	Mouse
<b>Isotype:</b>	IgG1
<b>Clonality:</b>	Monoclonal
<b>Immunogen:</b>	Full length human recombinant protein of human CTAG1B(NP_001318) produced in HEK293T cell.
<b>Formulation:</b>	Lyophilized powder (original buffer 1X PBS, pH 7.3, 8% trehalose)
<b>Reconstitution Method:</b>	For reconstitution, we recommend adding 100uL distilled water to a final antibody concentration of about 1 mg/mL. To use this carrier-free antibody for conjugation experiment, we strongly recommend performing another round of desalting process. (OriGene recommends Zeba Spin Desalting Columns, 7KMWCO from Thermo Scientific)
<b>Purification:</b>	Purified from mouse ascites fluids or tissue culture supernatant by affinity chromatography (protein A/G)
<b>Conjugation:</b>	Unconjugated
<b>Storage:</b>	Store at -20°C as received.
<b>Stability:</b>	Stable for 12 months from date of receipt.
<b>Predicted Protein Size:</b>	17.8 kDa
<b>Gene Name:</b>	cancer/testis antigen 1B
<b>Database Link:</b>	<a href="#">NP_001318</a> <a href="#">Entrez Gene 1485 Human</a> <a href="#">P78358</a>



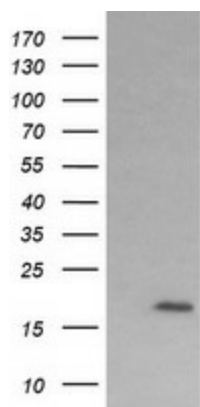
[View online »](#)

**Background:** The protein encoded by this gene is an antigen that is overexpressed in many cancers but that is also expressed in normal testis. This gene is found in a duplicated region of the X-chromosome and therefore has a neighboring gene of identical sequence. [provided by RefSeq, Jan 2012]

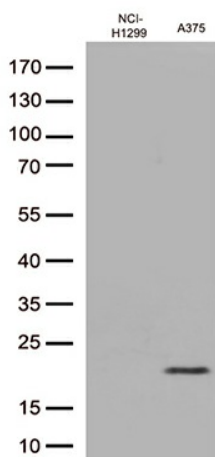
**Synonyms:** CT6.1; CTAG; CTAG1; ESO1; LAGE-2; LAGE2B; NY-ESO-1

**Protein Families:** Druggable Genome

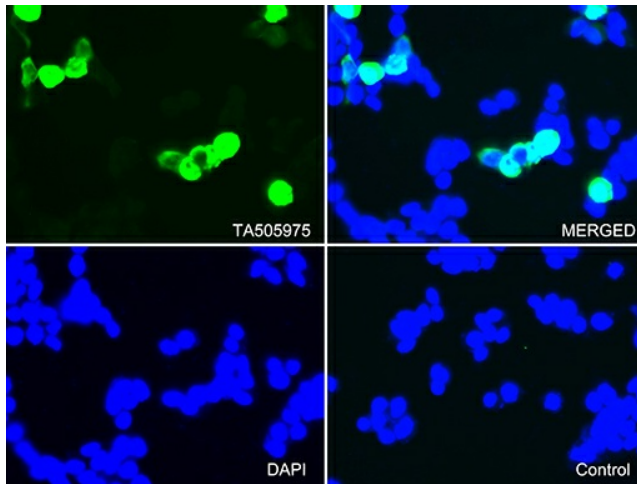
**Product images:**



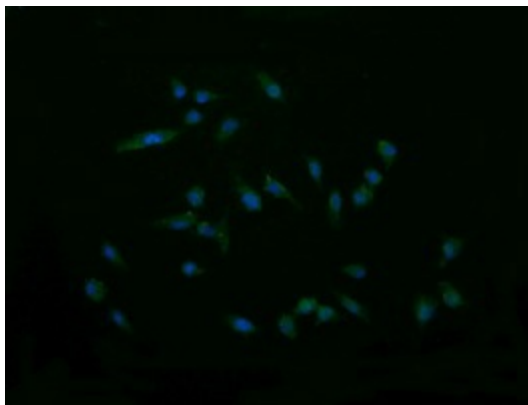
HEK293T cells were transfected with the pCMV6-ENTRY control (Left lane) or pCMV6-ENTRY CTAG1B ([RC213318], Right lane) cDNA for 48 hrs and lysed. Equivalent amounts of cell lysates (5 ug per lane) were separated by SDS-PAGE and immunoblotted with anti-CTAG1B. Positive lysates [LY400527] (100ug) and [LC400527] (20ug) can be purchased separately from OriGene.



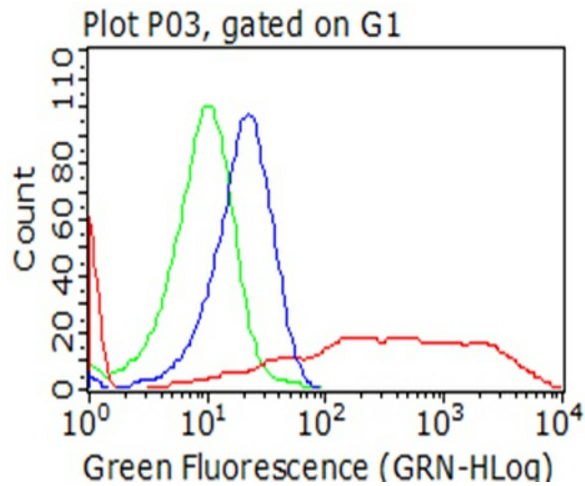
Western blot analysis of extracts (35ug) from 2 cell lines lysates by using anti-CTAG1B monoclonal antibody (1:500).



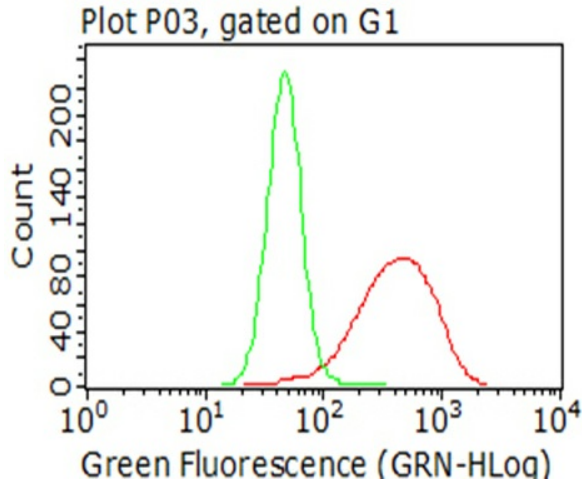
Immunofluorescent staining of 293T cells transfected by pCMV6-ENTRY CTAG1B ([RC213318]) using anti-CTAG1B antibody ([TA505975]/green, upper left; DAPI/blue, lower left; MERGED, upper right). 293T cells transfected with empty vector served as a negative control (MERGED, lower right) (1:100).



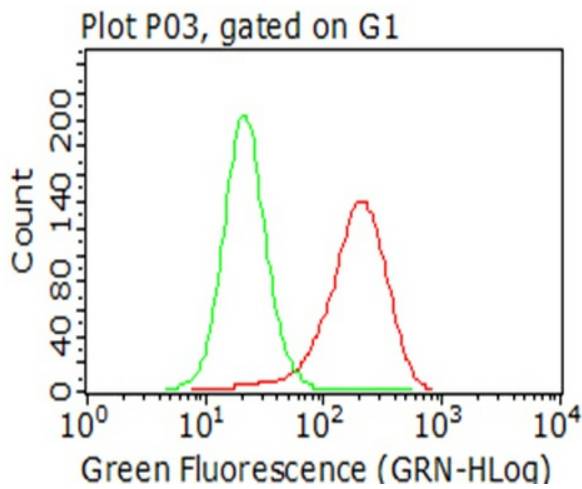
Immunofluorescent staining of HeLa cells using anti-CTAG1B mouse monoclonal antibody ([TA505975]).



Flow cytometric analysis of living 293T cells transfected with CTAG1B overexpression plasmid ([RC213318], Red)/empty vector ([PS100001], Blue) using anti-CTAG1B antibody ([TA505975]). Cells incubated with a non-specific antibody (Green) were used as isotype control (1:100).



Flow cytometric analysis of living NCI-H1299 cells, using anti-CTAG1B antibody ([TA505975], Red), compared to an isotype control (green) (1:100).



Flow cytometric analysis of living A375 cells, using anti-CTAG1B antibody ([TA505975], Red), compared to an isotype control (green) (1:100).