

## Product datasheet for **CF505929**

### Solo (SESTD1) Mouse Monoclonal Antibody [Clone ID: OTI7G4]

#### Product data:

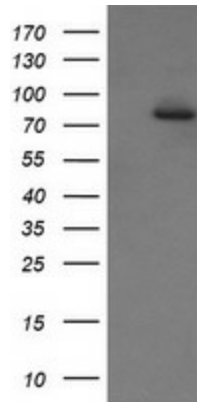
Product Type:	Primary Antibodies
Clone Name:	OTI7G4
Applications:	IF, IHC, WB
Recommended Dilution:	WB 1:200~2000, IHC 1:150, IF 1:100
Reactivity:	Human, Dog, Monkey, Mouse, Rat
Host:	Mouse
Isotype:	IgG2b
Clonality:	Monoclonal
Immunogen:	Full length human recombinant protein of human SESTD1(NP_835224) produced in HEK293T cell.
Formulation:	Lyophilized powder (original buffer 1X PBS, pH 7.3, 8% trehalose)
Reconstitution Method:	For reconstitution, we recommend adding 100uL distilled water to a final antibody concentration of about 1 mg/mL. To use this carrier-free antibody for conjugation experiment, we strongly recommend performing another round of desalting process. (OriGene recommends Zeba Spin Desalting Columns, 7KMWCO from Thermo Scientific)
Purification:	Purified from mouse ascites fluids or tissue culture supernatant by affinity chromatography (protein A/G)
Conjugation:	Unconjugated
Storage:	Store at -20°C as received.
Stability:	Stable for 12 months from date of receipt.
Predicted Protein Size:	79.2 kDa
Gene Name:	SEC14 and spectrin domain containing 1
Database Link:	<a href="#">NP_835224</a> <a href="#">Entrez Gene 228071</a> <a href="#">MouseEntrez Gene 295678</a> <a href="#">RatEntrez Gene 478823</a> <a href="#">DogEntrez Gene 703755</a> <a href="#">MonkeyEntrez Gene 91404</a> <a href="#">Human Q86VW0</a>
Synonyms:	SOLO



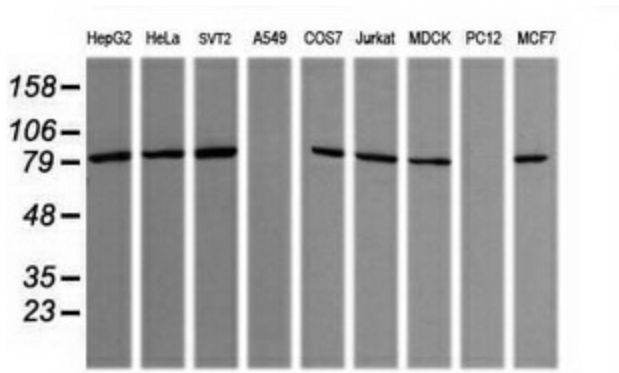
[View online »](#)

Protein Families: Druggable Genome

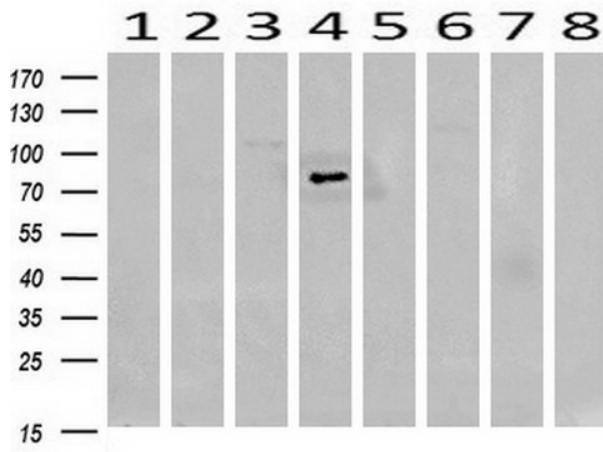
Product images:



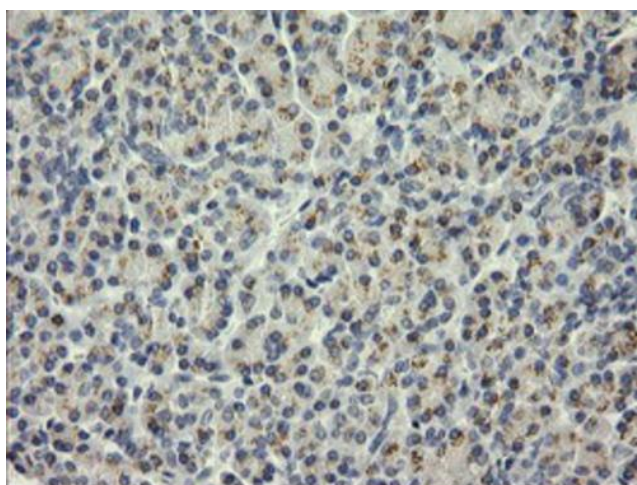
HEK293T cells were transfected with the pCMV6-ENTRY control (Left lane) or pCMV6-ENTRY SESTD1 ([RC207976], Right lane) cDNA for 48 hrs and lysed. Equivalent amounts of cell lysates (5 ug per lane) were separated by SDS-PAGE and immunoblotted with anti-SESTD1. Positive lysates [LY406035] (100ug) and [LC406035] (20ug) can be purchased separately from OriGene.



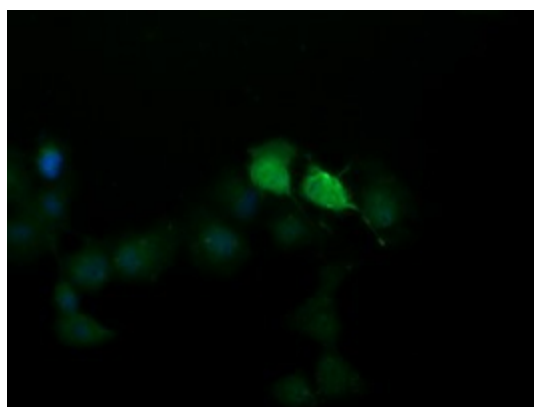
Western blot analysis of extracts (35ug) from 9 different cell lines by using anti-SESTD1 monoclonal antibody (HepG2: human; HeLa: human; SVT2: mouse; A549: human; COS7: monkey; Jurkat: human; MDCK: canine; PC12: rat; MCF7: human).



Western blot analysis of extracts (10ug) from 8 Human tissue by using anti-SESTD1 monoclonal antibody at 1:200 (1: Testis; 2: Uterus; 3: Breast; 4: Brain; 5: Liver; 6: Ovary; 7: Thyroid gland; 8: Colon).



Immunohistochemical staining of paraffin-embedded Human pancreas tissue within the normal limits using anti-SESTD1 mouse monoclonal antibody. Heat-induced epitope retrieval by EDTA solution buffer pH 8.0 at 120°C for 3 min.



Anti-SESTD1 mouse monoclonal antibody ([TA505929]) immunofluorescent staining of COS7 cells transiently transfected by pCMV6-ENTRY SESTD1 ([RC207976]).