

Product datasheet for **CF505871**

THUMPD1 Mouse Monoclonal Antibody [Clone ID: OT11H6]

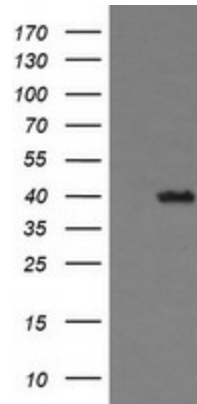
Product data:

Product Type:	Primary Antibodies
Clone Name:	OT11H6
Applications:	IF, IHC, WB
Recommended Dilution:	WB 1:200~4000, IHC 1:150, IF 1:100
Reactivity:	Human, Monkey, Mouse
Host:	Mouse
Isotype:	IgG1
Clonality:	Monoclonal
Immunogen:	Full length human recombinant protein of human THUMPD1(NP_060206) produced in HEK293T cell.
Formulation:	Lyophilized powder (original buffer 1X PBS, pH 7.3, 8% trehalose)
Reconstitution Method:	For reconstitution, we recommend adding 100uL distilled water to a final antibody concentration of about 1 mg/mL. To use this carrier-free antibody for conjugation experiment, we strongly recommend performing another round of desalting process. (OriGene recommends Zeba Spin Desalting Columns, 7KMWCO from Thermo Scientific)
Purification:	Purified from mouse ascites fluids or tissue culture supernatant by affinity chromatography (protein A/G)
Storage:	Store at -20°C as received.
Stability:	Stable for 12 months from date of receipt.
Predicted Protein Size:	39.1 kDa
Gene Name:	Homo sapiens THUMP domain containing 1 (THUMPD1), transcript variant 1, mRNA.
Database Link:	NP_060206 Entrez Gene 233802 MouseEntrez Gene 696746 MonkeyEntrez Gene 55623 Human
Synonyms:	Tan1

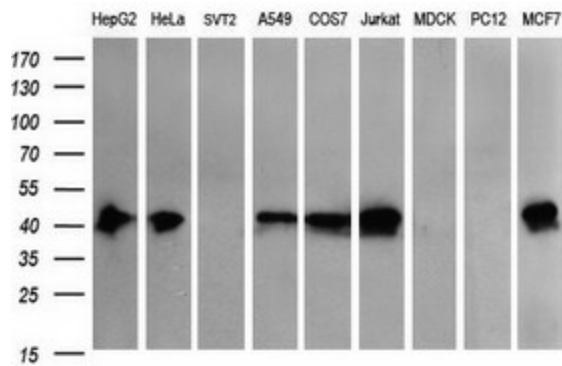


[View online »](#)

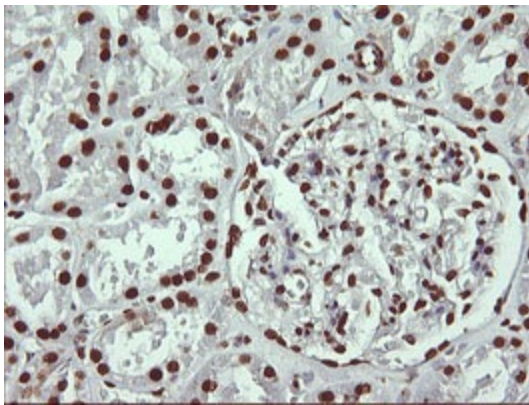
Product images:



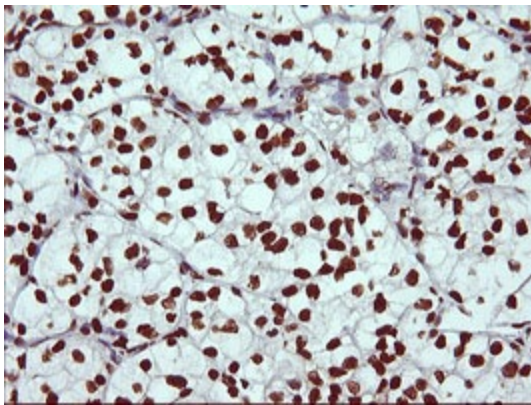
HEK293T cells were transfected with the pCMV6-ENTRY control (Left lane) or pCMV6-ENTRY THUMPD1 ([RC201773], Right lane) cDNA for 48 hrs and lysed. Equivalent amounts of cell lysates (5 ug per lane) were separated by SDS-PAGE and immunoblotted with anti-THUMPD1. Positive lysates [LY413587] (100ug) and [LC413587] (20ug) can be purchased separately from OriGene.



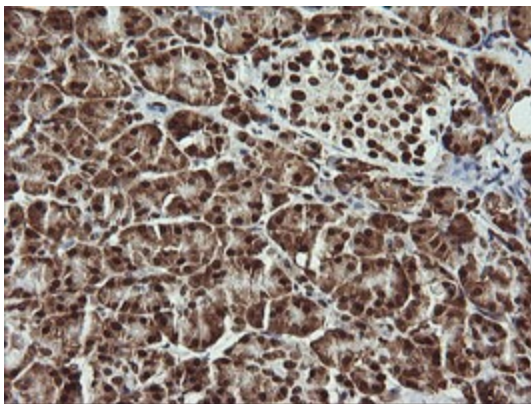
Western blot analysis of extracts (35ug) from 9 different cell lines by using anti-THUMPD1 monoclonal antibody (HepG2: human; HeLa: human; SVT2: mouse; A549: human; COS7: monkey; Jurkat: human; MDCK: canine; PC12: rat; MCF7: human).



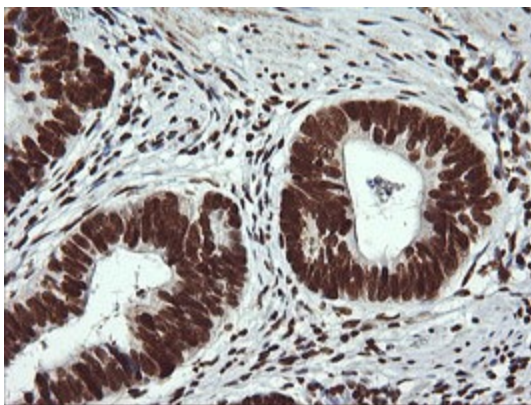
Immunohistochemical staining of paraffin-embedded Human Kidney tissue within the normal limits using anti-THUMPD1 mouse monoclonal antibody. (Heat-induced epitope retrieval by 10mM citric buffer, pH6.0, 120°C for 3min, [TA505871])



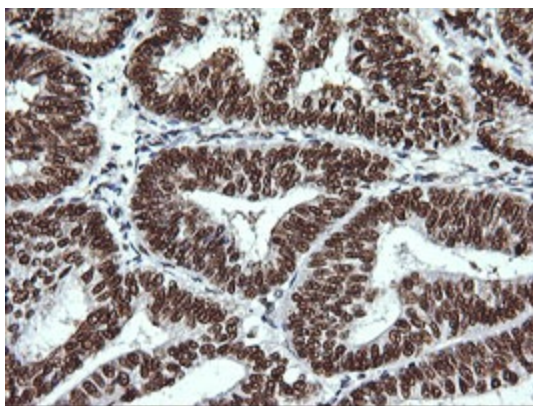
Immunohistochemical staining of paraffin-embedded Carcinoma of Human kidney tissue using anti-THUMPD1 mouse monoclonal antibody. (Heat-induced epitope retrieval by 10mM citric buffer, pH6.0, 120°C for 3min, [TA505871])



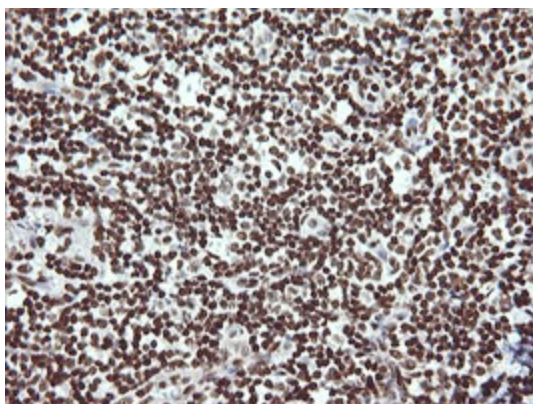
Immunohistochemical staining of paraffin-embedded Human pancreas tissue within the normal limits using anti-THUMPD1 mouse monoclonal antibody. (Heat-induced epitope retrieval by 10mM citric buffer, pH6.0, 120°C for 3min, [TA505871])



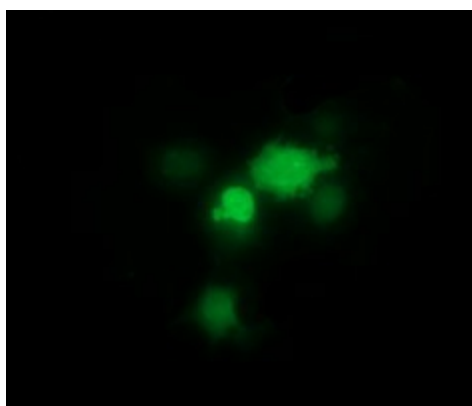
Immunohistochemical staining of paraffin-embedded Carcinoma of Human pancreas tissue using anti-THUMPD1 mouse monoclonal antibody. (Heat-induced epitope retrieval by 10mM citric buffer, pH6.0, 120°C for 3min, [TA505871])



Immunohistochemical staining of paraffin-embedded Adenocarcinoma of Human endometrium tissue using anti-THUMPD1 mouse monoclonal antibody. (Heat-induced epitope retrieval by 10mM citric buffer, pH6.0, 120°C for 3min, [TA505871])



Immunohistochemical staining of paraffin-embedded Human tonsil within the normal limits using anti-THUMPD1 mouse monoclonal antibody. (Heat-induced epitope retrieval by 10mM citric buffer, pH6.0, 120°C for 3min, [TA505871])



Anti-THUMPD1 mouse monoclonal antibody ([TA505871]) immunofluorescent staining of COS7 cells transiently transfected by pCMV6-ENTRY THUMPD1 ([RC201773]).



Immunofluorescent staining of HeLa cells using anti-THUMPD1 mouse monoclonal antibody ([TA505871]).