

## Product datasheet for **CF505809**

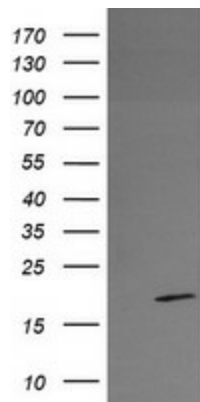
### RFESD Mouse Monoclonal Antibody [Clone ID: OTI2A7]

#### Product data:

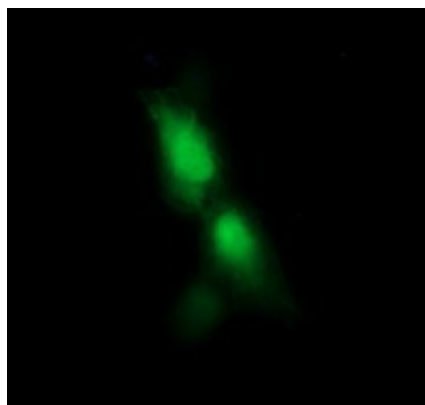
Product Type:	Primary Antibodies
Clone Name:	OTI2A7
Applications:	IF, WB
Recommended Dilution:	WB 1:4000, IF 1:100
Reactivity:	Human, Mouse
Host:	Mouse
Isotype:	IgG1
Clonality:	Monoclonal
Immunogen:	Full length human recombinant protein of human RFESD(NP_775498) produced in HEK293T cell.
Formulation:	Lyophilized powder (original buffer 1X PBS, pH 7.3, 8% trehalose)
Reconstitution Method:	For reconstitution, we recommend adding 100uL distilled water to a final antibody concentration of about 1 mg/mL. To use this carrier-free antibody for conjugation experiment, we strongly recommend performing another round of desalting process. (OriGene recommends Zeba Spin Desalting Columns, 7KMWCO from Thermo Scientific)
Purification:	Purified from mouse ascites fluids or tissue culture supernatant by affinity chromatography (protein A/G)
Conjugation:	Unconjugated
Storage:	Store at -20°C as received.
Stability:	Stable for 12 months from date of receipt.
Predicted Protein Size:	17.6 kDa
Gene Name:	Rieske Fe-S domain containing
Database Link:	<a href="#">NP_775498</a> <a href="#">Entrez Gene 218341 Mouse</a> <a href="#">Entrez Gene 317671 Human</a> <a href="#">Q8TAC1</a>
Synonyms:	Rieske (Fe-S) domain containing



[View online »](#)

**Product images:**

HEK293T cells were transfected with the pCMV6-ENTRY control (Cat# [PS100001], Left lane) or pCMV6-ENTRY RFESD (Cat# [RC207317], Right lane) cDNA for 48 hrs and lysed. Equivalent amounts of cell lysates (5 ug per lane) were separated by SDS-PAGE and immunoblotted with anti-RFESD (Cat# [TA505809]). Positive lysates [LY403551] (100ug) and [LC403551] (20ug) can be purchased separately from OriGene.



Anti-RFESD mouse monoclonal antibody ([TA505809]) immunofluorescent staining of COS7 cells transiently transfected by pCMV6-ENTRY RFESD ([RC207317]).