

## Product datasheet for **CF505808**

### MAPK4 Mouse Monoclonal Antibody [Clone ID: OTI2D7]

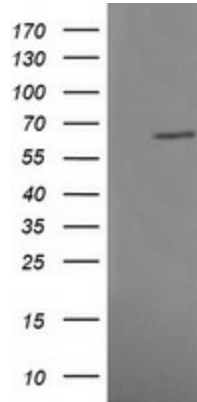
#### Product data:

Product Type:	Primary Antibodies
Clone Name:	OTI2D7
Applications:	IF, IHC, WB
Recommended Dilution:	WB 1:4000, IHC 1:150, IF 1:100
Reactivity:	Human, Mouse, Rat
Host:	Mouse
Isotype:	IgG2b
Clonality:	Monoclonal
Immunogen:	Full length human recombinant protein of human MAPK4(NP_002738) produced in HEK293T cell.
Formulation:	Lyophilized powder (original buffer 1X PBS, pH 7.3, 8% trehalose)
Reconstitution Method:	For reconstitution, we recommend adding 100uL distilled water to a final antibody concentration of about 1 mg/mL. To use this carrier-free antibody for conjugation experiment, we strongly recommend performing another round of desalting process. (OriGene recommends Zeba Spin Desalting Columns, 7KMWCO from Thermo Scientific)
Purification:	Purified from mouse ascites fluids or tissue culture supernatant by affinity chromatography (protein A/G)
Conjugation:	Unconjugated
Storage:	Store at -20°C as received.
Stability:	Stable for 12 months from date of receipt.
Predicted Protein Size:	65.7 kDa
Gene Name:	mitogen-activated protein kinase 4
Database Link:	<a href="#">NP_002738</a> <a href="#">Entrez Gene 54268 Rat</a> <a href="#">Entrez Gene 225724 Mouse</a> <a href="#">Entrez Gene 5596 Human</a> <a href="#">P31152</a>
Synonyms:	ERK-4; ERK4; p63-MAPK; p63MAPK; PRKM4
Protein Families:	Druggable Genome, Protein Kinase

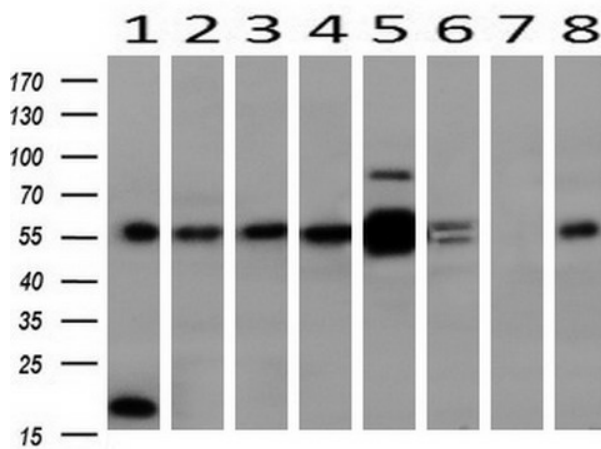


[View online »](#)

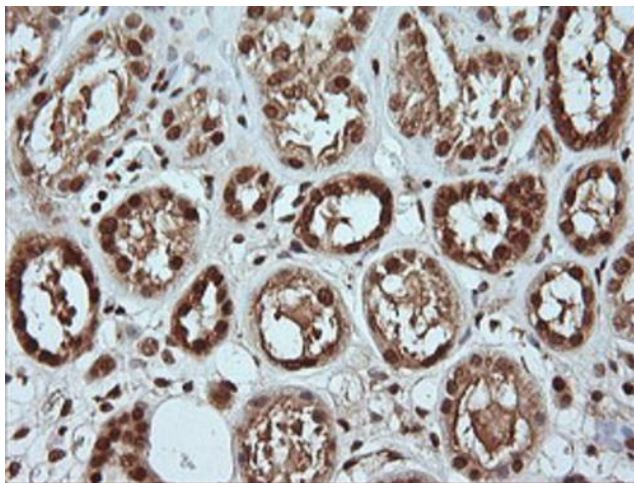
Product images:



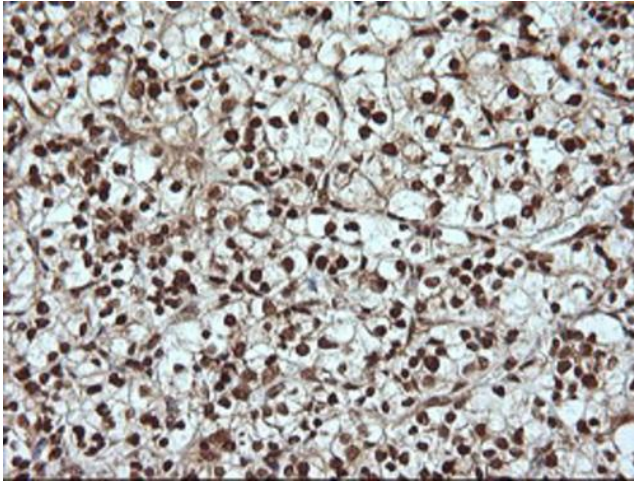
HEK293T cells were transfected with the pCMV6-ENTRY control (Cat# [PS100001], Left lane) or pCMV6-ENTRY MAPK4 (Cat# [RC207414], Right lane) cDNA for 48 hrs and lysed. Equivalent amounts of cell lysates (5 ug per lane) were separated by SDS-PAGE and immunoblotted with anti-MAPK4(Cat# [TA505808]). Positive lysates [LY419131] (100ug) and [LC419131] (20ug) can be purchased separately from OriGene.



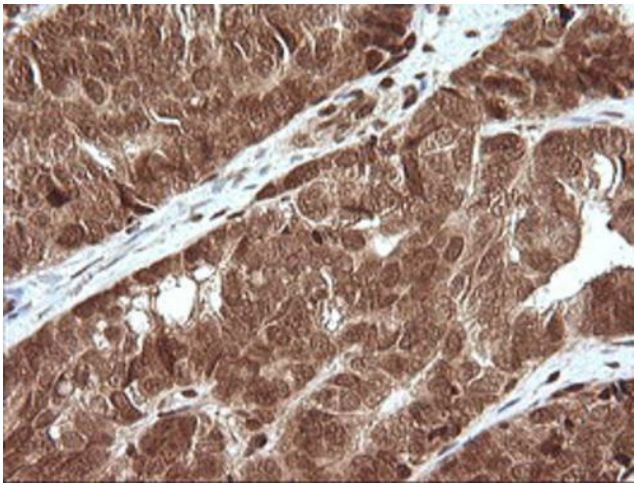
Western blot analysis of extracts (10ug) from 8 Human tissue by using anti-MAPK4 monoclonal antibody at 1:200 (1: Testis; 2: Uterus; 3: Breast; 4: Brain; 5: Liver; 6: Ovary; 7: Thyroid gland; 8: Colon).



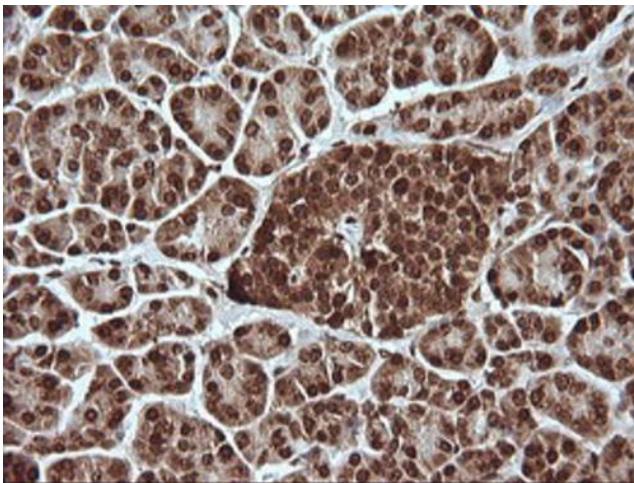
Immunohistochemical staining of paraffin-embedded Human Kidney tissue within the normal limits using anti-MAPK4 mouse monoclonal antibody. Heat-induced epitope retrieval by EDTA solution buffer pH 8.0 at 120°C for 3 min.



Immunohistochemical staining of paraffin-embedded Carcinoma of Human kidney tissue using anti-MAPK4 mouse monoclonal antibody. Heat-induced epitope retrieval by EDTA solution buffer pH 8.0 at 120°C for 3 min.

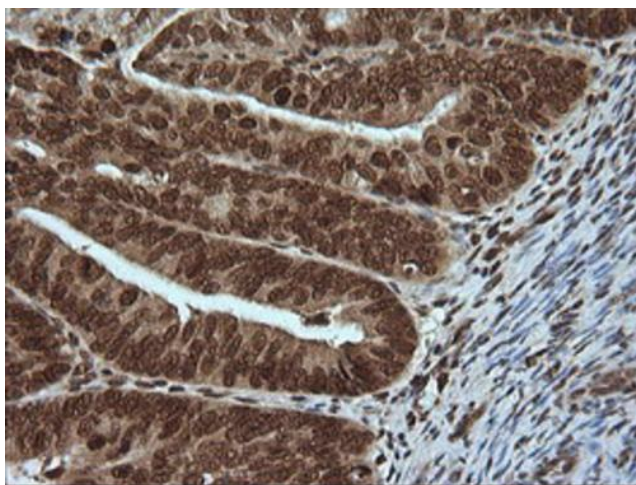


Immunohistochemical staining of paraffin-embedded Adenocarcinoma of Human ovary tissue using anti-MAPK4 mouse monoclonal antibody. Heat-induced epitope retrieval by EDTA solution buffer pH 8.0 at 120°C for 3 min.

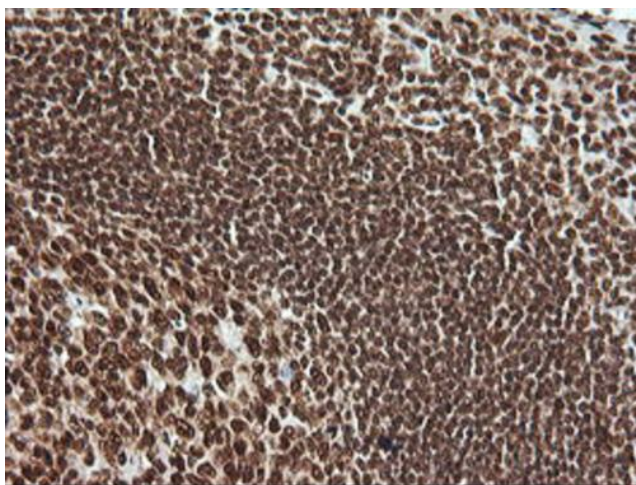


Immunohistochemical staining of paraffin-embedded Human pancreas tissue within the normal limits using anti-MAPK4 mouse monoclonal antibody. Heat-induced epitope retrieval by EDTA solution buffer pH 8.0 at 120°C for 3 min.

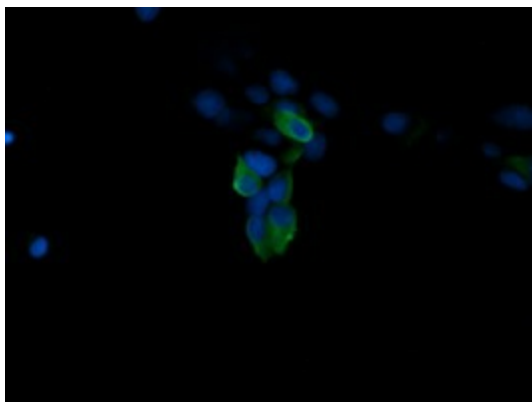




Immunohistochemical staining of paraffin-embedded Adenocarcinoma of Human endometrium tissue using anti-MAPK4 mouse monoclonal antibody. Heat-induced epitope retrieval by EDTA solution buffer pH 8.0 at 120°C for 3 min.



Immunohistochemical staining of paraffin-embedded Human tonsil within the normal limits using anti-MAPK4 mouse monoclonal antibody. Heat-induced epitope retrieval by EDTA solution buffer pH 8.0 at 120°C for 3 min.



Anti-MAPK4 mouse monoclonal antibody ([TA505808]) immunofluorescent staining of COS7 cells transiently transfected by pCMV6-ENTRY MAPK4 ([RC207414]).