

## Product datasheet for **CF505731**

### **BBOX1 Mouse Monoclonal Antibody [Clone ID: OTI1E11]**

#### **Product data:**

<b>Product Type:</b>	Primary Antibodies
<b>Clone Name:</b>	OTI1E11
<b>Applications:</b>	IF, IHC, WB
<b>Recommended Dilution:</b>	WB 1:4000, IHC 1:150, IF 1:100
<b>Reactivity:</b>	Human, Mouse, Rat
<b>Host:</b>	Mouse
<b>Isotype:</b>	IgG1
<b>Clonality:</b>	Monoclonal
<b>Immunogen:</b>	Full length human recombinant protein of human BBOX1(NP_003977) produced in HEK293T cell.
<b>Formulation:</b>	Lyophilized powder (original buffer 1X PBS, pH 7.3, 8% trehalose)
<b>Reconstitution Method:</b>	For reconstitution, we recommend adding 100uL distilled water to a final antibody concentration of about 1 mg/mL. To use this carrier-free antibody for conjugation experiment, we strongly recommend performing another round of desalting process. (OriGene recommends Zeba Spin Desalting Columns, 7KMWCO from Thermo Scientific)
<b>Purification:</b>	Purified from mouse ascites fluids or tissue culture supernatant by affinity chromatography (protein A/G)
<b>Conjugation:</b>	Unconjugated
<b>Storage:</b>	Store at -20°C as received.
<b>Stability:</b>	Stable for 12 months from date of receipt.
<b>Predicted Protein Size:</b>	44.5 kDa
<b>Gene Name:</b>	gamma-butyrobetaine hydroxylase 1
<b>Database Link:</b>	<a href="#">NP_003977</a> <a href="#">Entrez Gene 170442 Mouse</a> <a href="#">Entrez Gene 8424 Human</a> <a href="#">O75936</a>



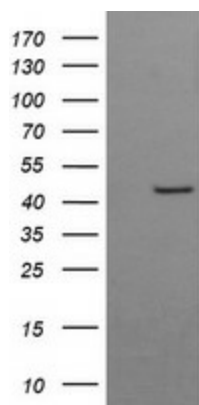
[View online »](#)

**Background:** This gene encodes gamma butyrobetaine hydroxylase which catalyzes the formation of L-carnitine from gamma-butyrobetaine, the last step in the L-carnitine biosynthetic pathway. Carnitine is essential for the transport of activated fatty acids across the mitochondrial membrane during mitochondrial beta-oxidation. [provided by RefSeq, Jul 2008]

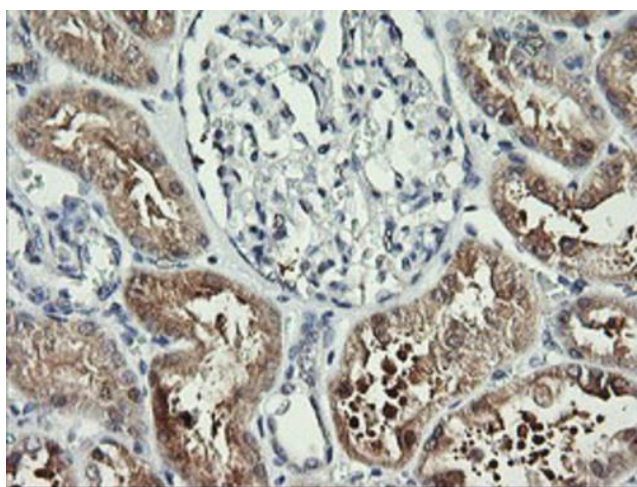
**Synonyms:** BBH; BBOX; G-BBH; gamma-BBH

**Protein Pathways:** Lysine degradation

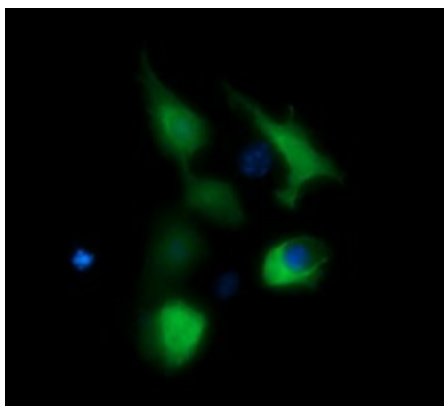
### Product images:



HEK293T cells were transfected with the pCMV6-ENTRY control (Left lane) or pCMV6-ENTRY BBOX1 ([RC203156], Right lane) cDNA for 48 hrs and lysed. Equivalent amounts of cell lysates (5 ug per lane) were separated by SDS-PAGE and immunoblotted with anti-BBOX1. Positive lysates [LY418299] (100ug) and [LC418299] (20ug) can be purchased separately from OriGene.



Immunohistochemical staining of paraffin-embedded Human Kidney tissue within the normal limits using anti-BBOX1 mouse monoclonal antibody. (Heat-induced epitope retrieval by 10mM citric buffer, pH6.0, 120°C for 3min, [TA505731])



Anti-BBOX1 mouse monoclonal antibody ([TA505731]) immunofluorescent staining of COS7 cells transiently transfected by pCMV6-ENTRY BBOX1 ([RC203156]).