

Product datasheet for **CF505697**

TRMT1 (TRMU) Mouse Monoclonal Antibody [Clone ID: OTI2B6]

Product data:

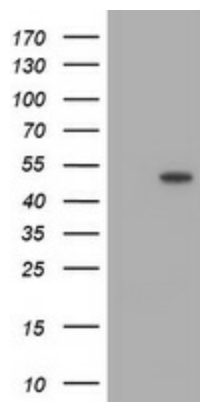
Product Type:	Primary Antibodies
Clone Name:	OTI2B6
Applications:	WB
Recommended Dilution:	WB 1:2000
Reactivity:	Human, Mouse, Rat
Host:	Mouse
Isotype:	IgG2a
Clonality:	Monoclonal
Immunogen:	Full length human recombinant protein of human TRMU (NP_060476) produced in HEK293T cell.
Formulation:	Lyophilized powder (original buffer 1X PBS, pH 7.3, 8% trehalose)
Reconstitution Method:	For reconstitution, we recommend adding 100uL distilled water to a final antibody concentration of about 1 mg/mL. To use this carrier-free antibody for conjugation experiment, we strongly recommend performing another round of desalting process. (OriGene recommends Zeba Spin Desalting Columns, 7KMWCO from Thermo Scientific)
Purification:	Purified from mouse ascites fluids or tissue culture supernatant by affinity chromatography (protein A/G)
Conjugation:	Unconjugated
Storage:	Store at -20°C as received.
Stability:	Stable for 12 months from date of receipt.
Predicted Protein Size:	47.6 kDa
Gene Name:	tRNA mitochondrial 2-thiouridylase
Database Link:	NP_060476 Entrez Gene 72026 Mouse Entrez Gene 362976 Rat Entrez Gene 55687 Human O75648
Background:	This gene is a member of the trmU family. It encodes a mitochondria-specific tRNA-modifying enzyme that is required for the 2-thio modification of 5-taurinomethyl-2-thiouridine tRNA-Lys on the wobble position of the anticodon. [provided by RefSeq, Jul



[View online »](#)

Synonyms: LCAL3; MTO2; MTU1; TRMT; TRMT1; TRNT1

Product images:



HEK293T cells were transfected with the pCMV6-ENTRY control (Left lane) or pCMV6-ENTRY TRMU ([RC219032], Right lane) cDNA for 48 hrs and lysed. Equivalent amounts of cell lysates (5 ug per lane) were separated by SDS-PAGE and immunoblotted with anti-TRMU. Positive lysates [LY402642] (100ug) and [LC402642] (20ug) can be purchased separately from OriGene.