

Product datasheet for CF505652

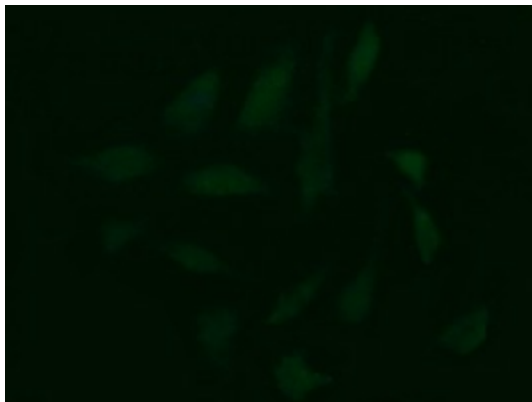
C10orf7 (CDC123) Mouse Monoclonal Antibody [Clone ID: OTI1F8]

Product data:

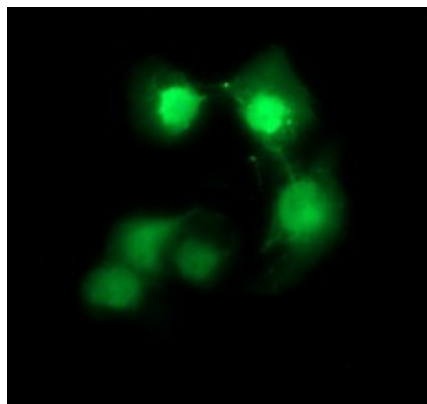
| | |
|-------------------------|--|
| Product Type: | Primary Antibodies |
| Clone Name: | OTI1F8 |
| Applications: | IF, IHC, WB |
| Recommended Dilution: | WB 1:200~4000, IHC 1:150, IF 1:100 |
| Reactivity: | Human, Monkey, Mouse, Rat, Dog |
| Host: | Mouse |
| Isotype: | IgG2a |
| Clonality: | Monoclonal |
| Immunogen: | Full length human recombinant protein of human CDC123(NP_006014) produced in HEK293T cell. |
| Formulation: | Lyophilized powder (original buffer 1X PBS, pH 7.3, 8% trehalose) |
| Reconstitution Method: | For reconstitution, we recommend adding 100uL distilled water to a final antibody concentration of about 1 mg/mL. To use this carrier-free antibody for conjugation experiment, we strongly recommend performing another round of desalting process. (OriGene recommends Zeba Spin Desalting Columns, 7KMWCO from Thermo Scientific) |
| Purification: | Purified from mouse ascites fluids or tissue culture supernatant by affinity chromatography (protein A/G) |
| Storage: | Store at -20°C as received. |
| Stability: | Stable for 12 months from date of receipt. |
| Predicted Protein Size: | 39 kDa |
| Gene Name: | Homo sapiens cell division cycle 123 (CDC123), mRNA. |
| Database Link: | NP_006014 Entrez Gene 98828 MouseEntrez Gene 116656 RatEntrez Gene 478005 DogEntrez Gene 694239 MonkeyEntrez Gene 8872 Human |
| Synonyms: | C10orf7; D123 |



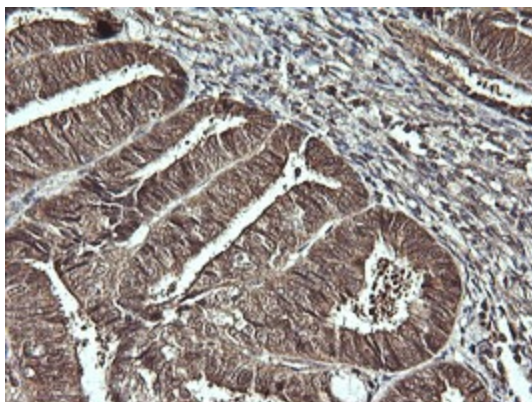
[View online »](#)

Product images:

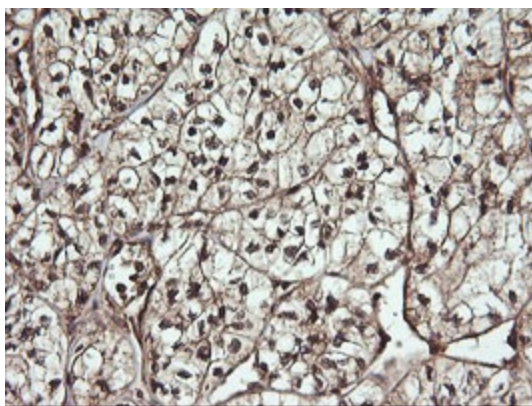
Immunofluorescent staining of HeLa cells using anti-CDC123 mouse monoclonal antibody (TA505652).



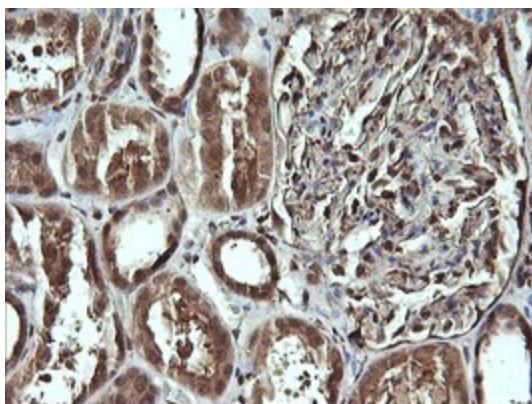
Anti-CDC123 mouse monoclonal antibody (TA505652) immunofluorescent staining of COS7 cells transiently transfected by pCMV6-ENTRY CDC123 (RC203311).



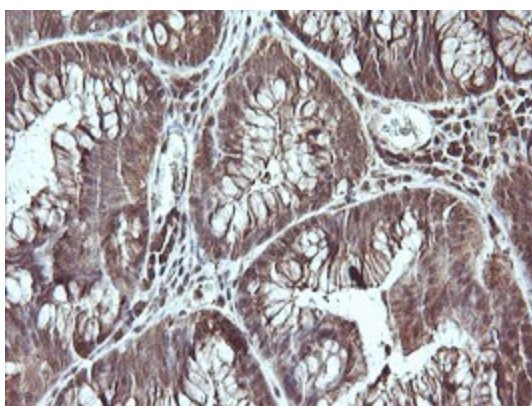
Immunohistochemical staining of paraffin-embedded Adenocarcinoma of Human endometrium tissue using anti-CDC123 mouse monoclonal antibody. (Heat-induced epitope retrieval by 10mM citric buffer, pH6.0, 120°C for 3min, [TA505652])



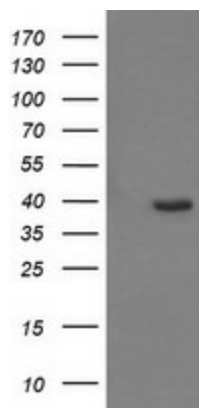
Immunohistochemical staining of paraffin-embedded Carcinoma of Human kidney tissue using anti-CDC123 mouse monoclonal antibody. (Heat-induced epitope retrieval by 10mM citric buffer, pH6.0, 120°C for 3min, [TA505652])



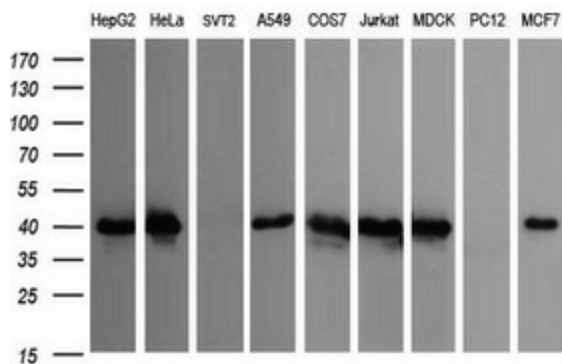
Immunohistochemical staining of paraffin-embedded Human Kidney tissue within the normal limits using anti-CDC123 mouse monoclonal antibody. (Heat-induced epitope retrieval by 10mM citric buffer, pH6.0, 120°C for 3min, [TA505652])



Immunohistochemical staining of paraffin-embedded Adenocarcinoma of Human colon tissue using anti-CDC123 mouse monoclonal antibody. (Heat-induced epitope retrieval by 10mM citric buffer, pH6.0, 120°C for 3min, [TA505652])



HEK293T cells were transfected with the pCMV6-ENTRY control (Left lane) or pCMV6-ENTRY CDC123 ([RC203311], Right lane) cDNA for 48 hrs and lysed. Equivalent amounts of cell lysates (5 ug per lane) were separated by SDS-PAGE and immunoblotted with anti-CDC123. Positive lysates [LY416883] (100ug) and [LC416883] (20ug) can be purchased separately from OriGene.



Western blot analysis of extracts (35ug) from 9 different cell lines by using anti-CDC123 monoclonal antibody (HepG2: human; HeLa: human; SVT2: mouse; A549: human; COS7: monkey; Jurkat: human; MDCK: canine; PC12: rat; MCF7: human).