

## Product datasheet for **CF505587**

### **NIPSNAP2 Mouse Monoclonal Antibody [Clone ID: OTI1B2]**

#### **Product data:**

<b>Product Type:</b>	Primary Antibodies
<b>Clone Name:</b>	OTI1B2
<b>Applications:</b>	FC, IF, WB
<b>Recommended Dilution:</b>	WB: 1:200-1:1000, IF: 1:100, FLOW: 1:100
<b>Reactivity:</b>	Human
<b>Host:</b>	Mouse
<b>Isotype:</b>	IgG1
<b>Clonality:</b>	Monoclonal
<b>Immunogen:</b>	Full length human recombinant protein of human GBAS(NP_001474) produced in E.coli.
<b>Formulation:</b>	Lyophilized powder (original buffer 1X PBS, pH 7.3, 8% trehalose)
<b>Reconstitution Method:</b>	For reconstitution, we recommend adding 100uL distilled water to a final antibody concentration of about 1 mg/mL. To use this carrier-free antibody for conjugation experiment, we strongly recommend performing another round of desalting process. (OriGene recommends Zeba Spin Desalting Columns, 7KMWCO from Thermo Scientific)
<b>Purification:</b>	Purified from mouse ascites fluids or tissue culture supernatant by affinity chromatography (protein A/G)
<b>Conjugation:</b>	Unconjugated
<b>Storage:</b>	Store at -20°C as received.
<b>Stability:</b>	Stable for 12 months from date of receipt.
<b>Predicted Protein Size:</b>	33.6 kDa
<b>Gene Name:</b>	nipsnap homolog 2
<b>Database Link:</b>	<a href="#">NP_001474</a> <a href="#">Entrez Gene 2631 Human</a> <a href="#">O75323</a>



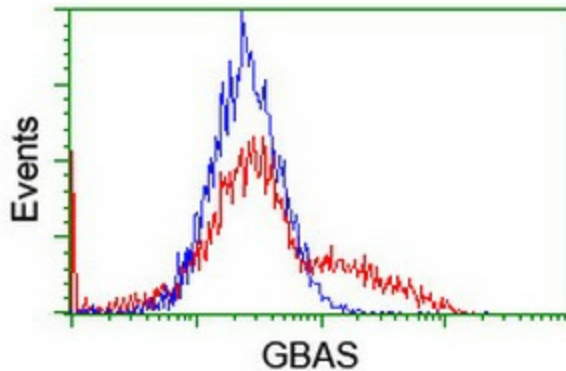
[View online »](#)

**Background:**

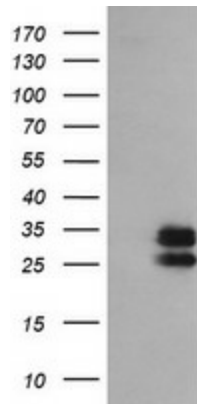
This gene encodes a member of the NipSnap family of proteins that may be involved in vesicular transport. The encoded protein is localized to mitochondria and plays a role in oxidative phosphorylation. A pseudogene of this gene is located on the long arm of chromosome 2. Alternatively spliced transcript variants encoding multiple isoforms have been observed for this gene. [provided by RefSeq, Feb 2011]

**Synonyms:**

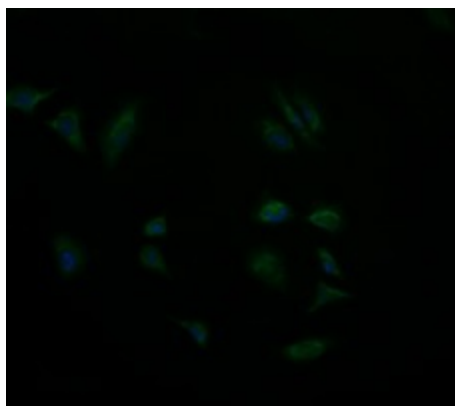
NIPSNAP2

**Product images:**


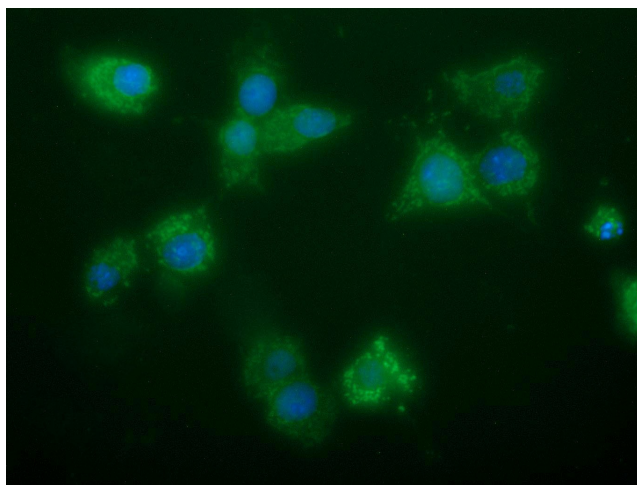
HEK293T cells transfected with either [RC205027] overexpress plasmid (Red) or empty vector control plasmid (Blue) were immunostained by anti-GBAS antibody ([TA505587]), and then analyzed by flow cytometry.



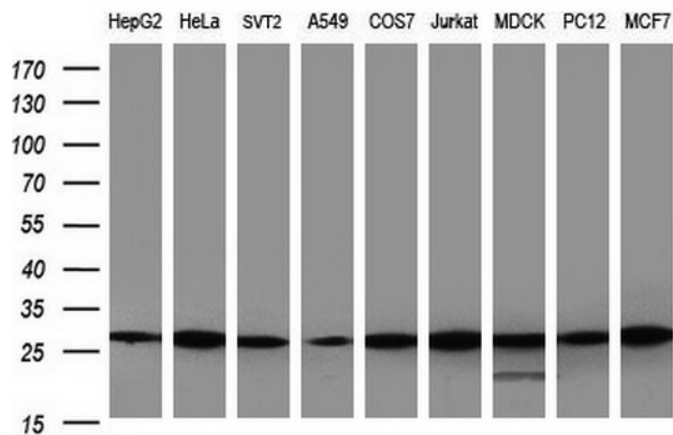
HEK293T cells were transfected with the pCMV6-ENTRY control (Left lane) or pCMV6-ENTRY GBAS ([RC205027], Right lane) cDNA for 48 hrs and lysed. Equivalent amounts of cell lysates (5 ug per lane) were separated by SDS-PAGE and immunoblotted with anti-GBAS. Positive lysates [LY400571] (100ug) and [LC400571] (20ug) can be purchased separately from OriGene.



Immunofluorescent staining of HeLa cells using anti-GBAS mouse monoclonal antibody (TA505587).



Anti-GBAS mouse monoclonal antibody (TA505587) immunofluorescent staining of COS7 cells transiently transfected by pCMV6-ENTRY GBAS (RC205027).



Western blot analysis of extracts (35ug) from 9 different cell lines by using anti-GBAS monoclonal antibody (HepG2: human; HeLa: human; SVT2: mouse; A549: human; COS7: monkey; Jurkat: human; MDCK: canine; PC12: rat; MCF7: human) (1:200).