

Product datasheet for **CF505585**

NIPSNAP2 Mouse Monoclonal Antibody [Clone ID: OTI1D6]

Product data:

Product Type:	Primary Antibodies
Clone Name:	OTI1D6
Applications:	FC, IF, WB
Recommended Dilution:	WB: 1:200-1:1000, IF: 1:100, FLOW: 1:100
Reactivity:	Human
Host:	Mouse
Isotype:	IgG1
Clonality:	Monoclonal
Immunogen:	Full length human recombinant protein of human GBAS(NP_001474) produced in E.coli.
Formulation:	Lyophilized powder (original buffer 1X PBS, pH 7.3, 8% trehalose)
Reconstitution Method:	For reconstitution, we recommend adding 100uL distilled water to a final antibody concentration of about 1 mg/mL. To use this carrier-free antibody for conjugation experiment, we strongly recommend performing another round of desalting process. (OriGene recommends Zeba Spin Desalting Columns, 7KMWCO from Thermo Scientific)
Purification:	Purified from mouse ascites fluids or tissue culture supernatant by affinity chromatography (protein A/G)
Conjugation:	Unconjugated
Storage:	Store at -20°C as received.
Stability:	Stable for 12 months from date of receipt.
Predicted Protein Size:	33.6 kDa
Gene Name:	nipsnap homolog 2
Database Link:	NP_001474 Entrez Gene 2631 Human O75323



[View online »](#)

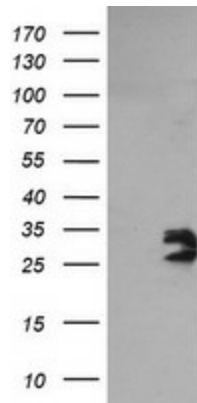
Background:

This gene encodes a member of the NipSnap family of proteins that may be involved in vesicular transport. The encoded protein is localized to mitochondria and plays a role in oxidative phosphorylation. A pseudogene of this gene is located on the long arm of chromosome 2. Alternatively spliced transcript variants encoding multiple isoforms have been observed for this gene. [provided by RefSeq, Feb 2011]

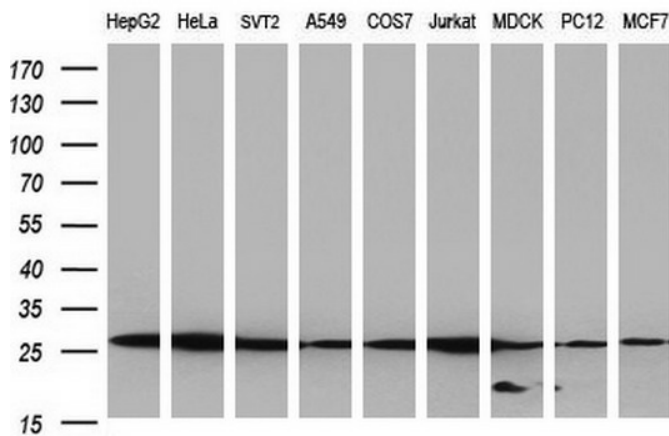
Synonyms:

NIPSNAP2

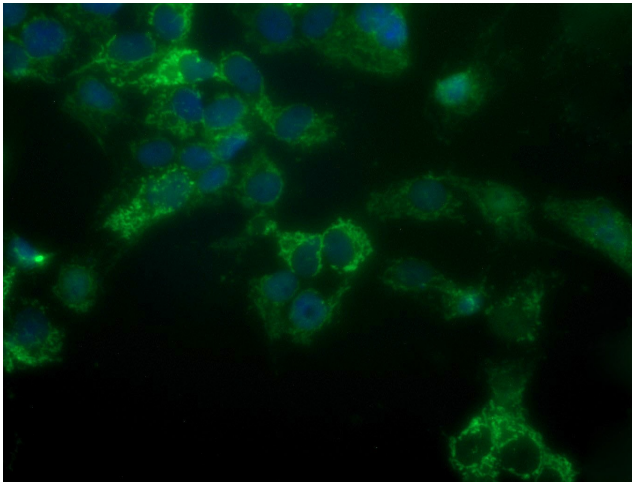
Product images:



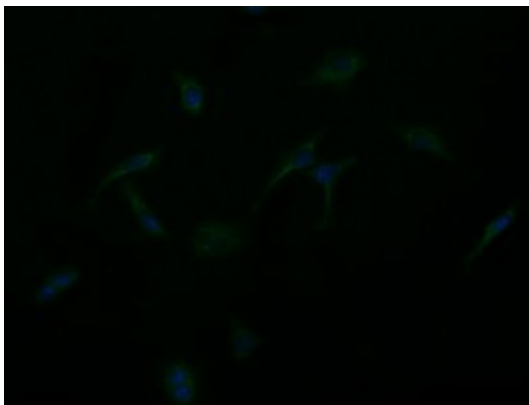
HEK293T cells were transfected with the pCMV6-ENTRY control (Left lane) or pCMV6-ENTRY GBAS ([RC205027], Right lane) cDNA for 48 hrs and lysed. Equivalent amounts of cell lysates (5 ug per lane) were separated by SDS-PAGE and immunoblotted with anti-GBAS. Positive lysates [LY400571] (100ug) and [LC400571] (20ug) can be purchased separately from OriGene.



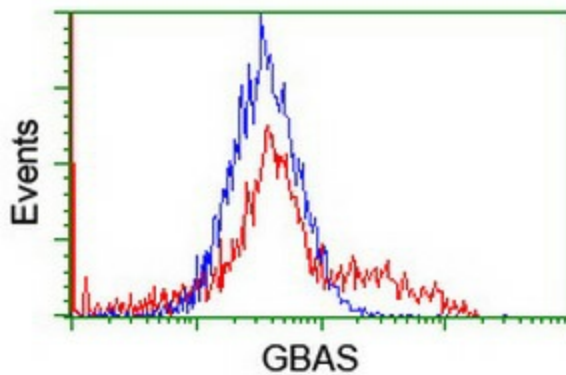
Western blot analysis of extracts (35ug) from 9 different cell lines by using anti-GBAS monoclonal antibody (HepG2: human; HeLa: human; SVT2: mouse; A549: human; COS7: monkey; Jurkat: human; MDCK: canine; PC12: rat; MCF7: human) (1:200).



Anti-GBAS mouse monoclonal antibody ([TA505585]) immunofluorescent staining of COS7 cells transiently transfected by pCMV6-ENTRY GBAS ([RC205027]).



Immunofluorescent staining of HeLa cells using anti-GBAS mouse monoclonal antibody ([TA505585]).



HEK293T cells transfected with either [RC205027] overexpress plasmid (Red) or empty vector control plasmid (Blue) were immunostained by anti-GBAS antibody ([TA505585]), and then analyzed by flow cytometry.