

Product datasheet for **CF505567**

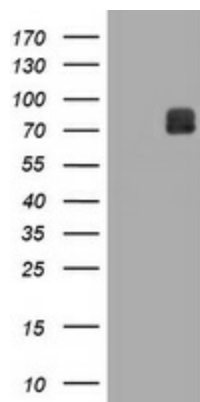
C16orf9 (FAM234A) Mouse Monoclonal Antibody [Clone ID: OTI3B3]

Product data:

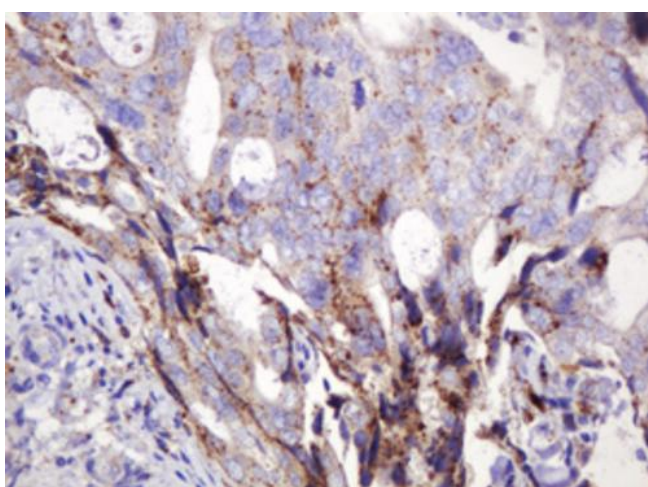
| | |
|--------------------------------|--|
| Product Type: | Primary Antibodies |
| Clone Name: | OTI3B3 |
| Applications: | IHC, WB |
| Recommended Dilution: | WB 1:2000, IHC 1:150 |
| Reactivity: | Human |
| Host: | Mouse |
| Isotype: | IgG1 |
| Clonality: | Monoclonal |
| Immunogen: | Full length human recombinant protein of human ITFG3 (NP_114428) produced in HEK293T cell. |
| Formulation: | Lyophilized powder (original buffer 1X PBS, pH 7.3, 8% trehalose) |
| Reconstitution Method: | For reconstitution, we recommend adding 100uL distilled water to a final antibody concentration of about 1 mg/mL. To use this carrier-free antibody for conjugation experiment, we strongly recommend performing another round of desalting process. (OriGene recommends Zeba Spin Desalting Columns, 7KMWCO from Thermo Scientific) |
| Purification: | Purified from mouse ascites fluids or tissue culture supernatant by affinity chromatography (protein A/G) |
| Conjugation: | Unconjugated |
| Storage: | Store at -20°C as received. |
| Stability: | Stable for 12 months from date of receipt. |
| Predicted Protein Size: | 59.5 kDa |
| Gene Name: | family with sequence similarity 234 member A |
| Database Link: | NP_114428 Entrez Gene 83986 Human Q9H0X4 |
| Synonyms: | C16orf9; gs19; ITFG3 |
| Protein Families: | Transmembrane |



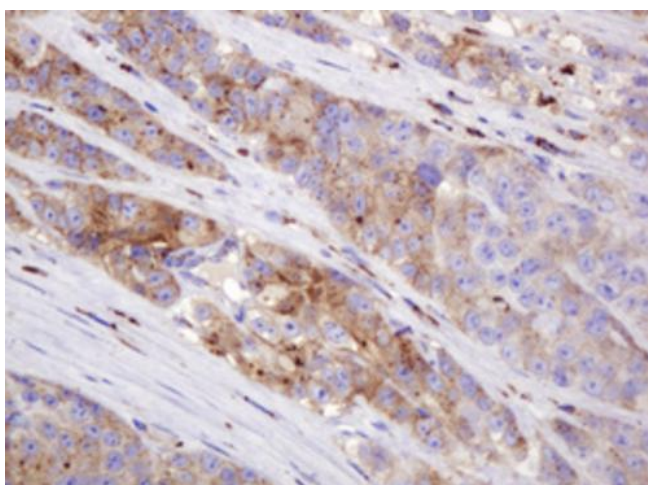
[View online »](#)

Product images:

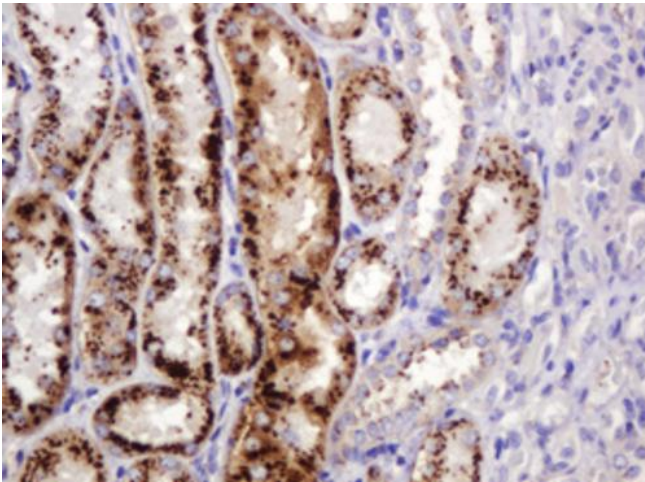
HEK293T cells were transfected with the pCMV6-ENTRY control (Cat# [PS100001], Left lane) or pCMV6-ENTRY ITFG3 (Cat# [RC202291], Right lane) cDNA for 48 hrs and lysed. Equivalent amounts of cell lysates (5 ug per lane) were separated by SDS-PAGE and immunoblotted with anti-ITFG3 (Cat# [TA505567]). Positive lysates [LY410348] (100ug) and [LC410348] (20ug) can be purchased separately from OriGene.



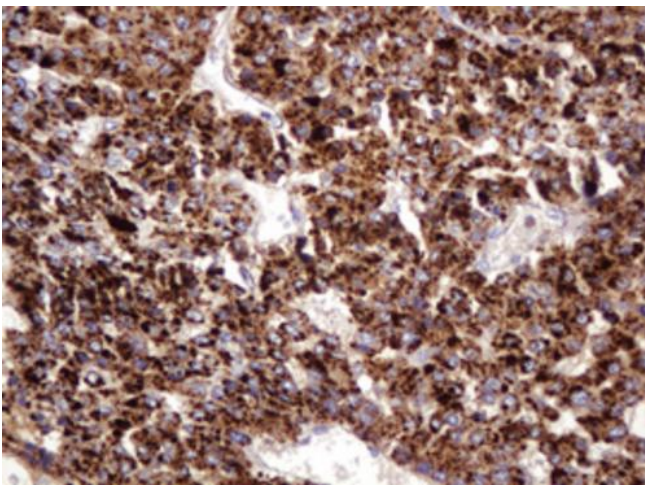
Immunohistochemical staining of paraffin-embedded Adenocarcinoma of Human breast tissue using anti-ITFG3 mouse monoclonal antibody. (Heat-induced epitope retrieval by 10mM citric buffer, pH6.0, 120°C for 3min, [TA505567])



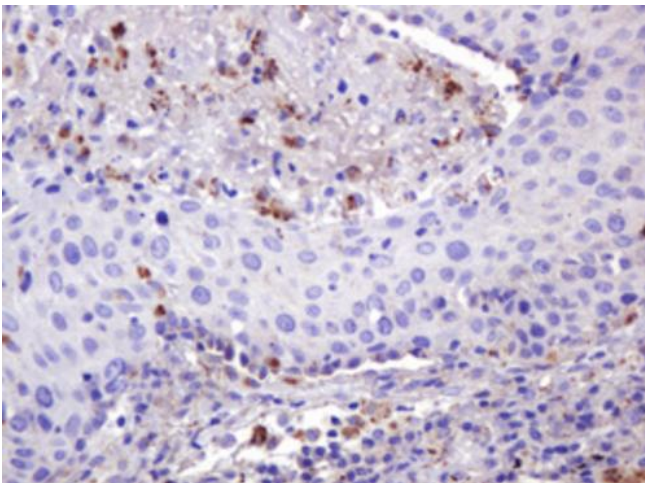
Immunohistochemical staining of paraffin-embedded Adenocarcinoma of Human colon tissue using anti-ITFG3 mouse monoclonal antibody. (Heat-induced epitope retrieval by 10mM citric buffer, pH6.0, 120°C for 3min, [TA505567])



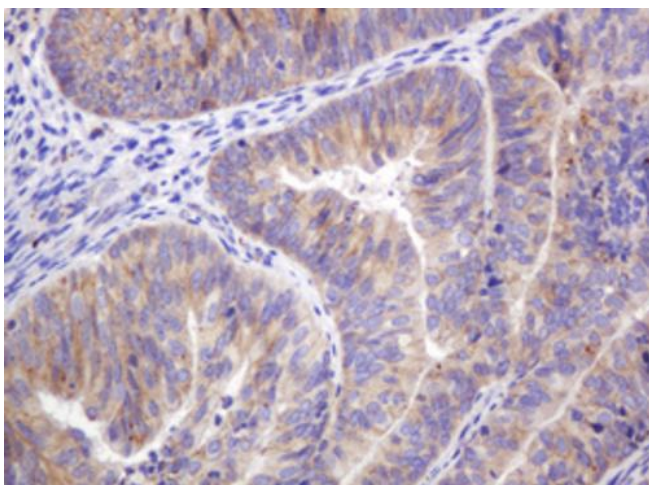
Immunohistochemical staining of paraffin-embedded Human Kidney tissue within the normal limits using anti-ITFG3 mouse monoclonal antibody. (Heat-induced epitope retrieval by 10mM citric buffer, pH6.0, 120°C for 3min, [TA505567])



Immunohistochemical staining of paraffin-embedded Carcinoma of Human liver tissue using anti-ITFG3 mouse monoclonal antibody. (Heat-induced epitope retrieval by 10mM citric buffer, pH6.0, 120°C for 3min, [TA505567])



Immunohistochemical staining of paraffin-embedded Carcinoma of Human lung tissue using anti-ITFG3 mouse monoclonal antibody. (Heat-induced epitope retrieval by 10mM citric buffer, pH6.0, 120°C for 3min, [TA505567])



Immunohistochemical staining of paraffin-embedded Adenocarcinoma of Human endometrium tissue using anti-ITFG3 mouse monoclonal antibody. (Heat-induced epitope retrieval by 10mM citric buffer, pH6.0, 120°C for 3min, [TA505567])