

## Product datasheet for **CF505537**

### PCDH7 Mouse Monoclonal Antibody [Clone ID: OTI1F7]

#### Product data:

Product Type:	Primary Antibodies
Clone Name:	OTI1F7
Applications:	IF, IHC, WB
Recommended Dilution:	WB 1:2000, IHC 1:150, IF 1:100
Reactivity:	Human, Mouse, Rat
Host:	Mouse
Isotype:	IgG2b
Clonality:	Monoclonal
Immunogen:	Full length human recombinant protein of human PCDH7(NP_115833) produced in HEK293T cell.
Formulation:	Lyophilized powder (original buffer 1X PBS, pH 7.3, 8% trehalose)
Reconstitution Method:	For reconstitution, we recommend adding 100uL distilled water to a final antibody concentration of about 1 mg/mL. To use this carrier-free antibody for conjugation experiment, we strongly recommend performing another round of desalting process. (OriGene recommends Zeba Spin Desalting Columns, 7KMWCO from Thermo Scientific)
Purification:	Purified from mouse ascites fluids or tissue culture supernatant by affinity chromatography (protein A/G)
Conjugation:	Unconjugated
Storage:	Store at -20°C as received.
Stability:	Stable for 12 months from date of receipt.
Predicted Protein Size:	132.4 kDa
Gene Name:	protocadherin 7
Database Link:	<a href="#">NP_115833</a> <a href="#">Entrez Gene 54216 Mouse</a> <a href="#">Entrez Gene 5099 Human</a> <a href="#">O60245</a>

[View online »](#)

**Background:** This gene belongs to the protocadherin gene family, a subfamily of the cadherin superfamily. The gene encodes a protein with an extracellular domain containing 7 cadherin repeats. The gene product is an integral membrane protein that is thought to function in cell-cell recognition and adhesion. Alternative splicing yields isoforms with unique cytoplasmic tails. [provided by RefSeq]

**Synonyms:** BH-Pcdh; BHPCDH; PPP1R120

**Protein Families:** Druggable Genome, Transmembrane

## Product images:

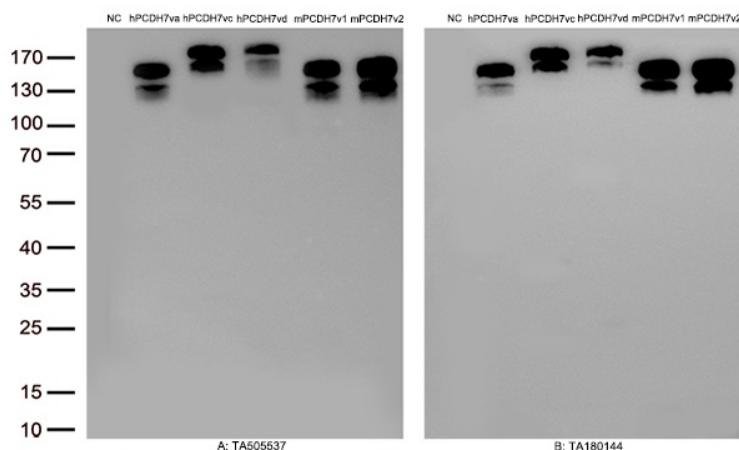
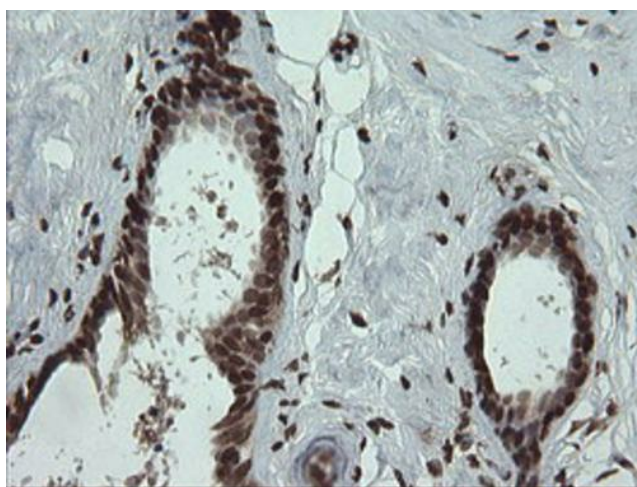
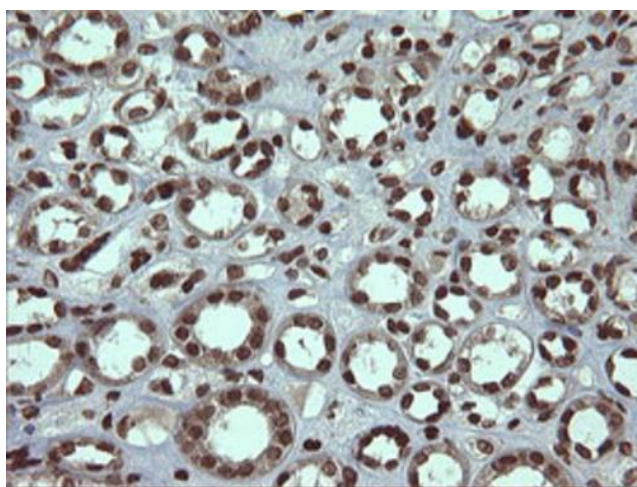


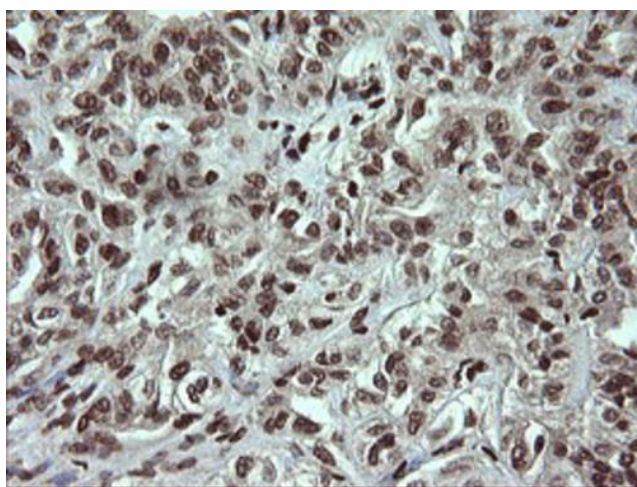
Figure A, Western blot analysis of overexpressed lysates (15ug per lane) from HEK293T cells transfected with empty plasmid ([PS100001], NC), human PCDH7 plasmid ([RC213200], hPCDH7 va), human PCDH7 plasmid ([RC223033], hPCDH7 vc), human PCDH7 plasmid ([RC230683], hPCDH7 vd), mouse PCDH7 plasmid ([MR214196], mPCDH7 v1), mouse PCDH7 plasmid ([MR214198], mPCDH7 v2) using anti-PCDH7 antibody [TA505537] (1:500). Figure B, Western blot analysis of the same samples as figure A with anti-DDK antibody ([TA180144], 1:1000)



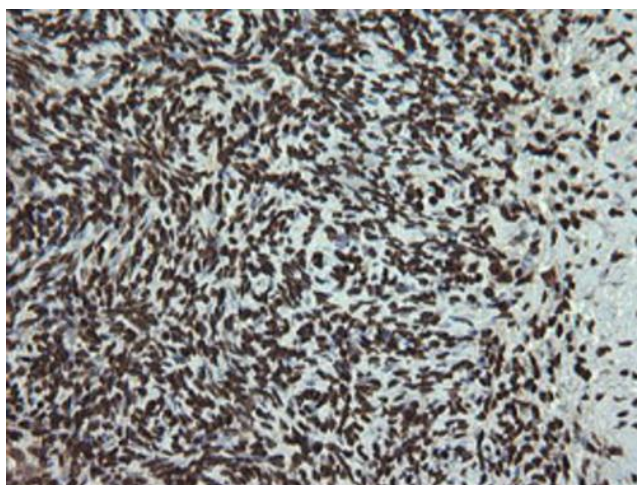
Immunohistochemical staining of paraffin-embedded Human breast tissue within the normal limits using anti-PCDH7 mouse monoclonal antibody. (Heat-induced epitope retrieval by 10mM citric buffer, pH6.0, 100°C for 10min, [TA505537])



Immunohistochemical staining of paraffin-embedded Human Kidney tissue within the normal limits using anti-PCDH7 mouse monoclonal antibody. (Heat-induced epitope retrieval by 10mM citric buffer, pH6.0, 100°C for 10min, [TA505537])

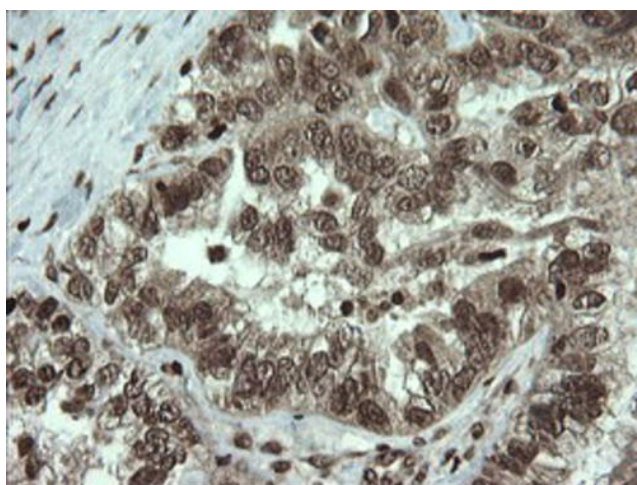


Immunohistochemical staining of paraffin-embedded Carcinoma of Human kidney tissue using anti-PCDH7 mouse monoclonal antibody. (Heat-induced epitope retrieval by 10mM citric buffer, pH6.0, 100°C for 10min, [TA505537])

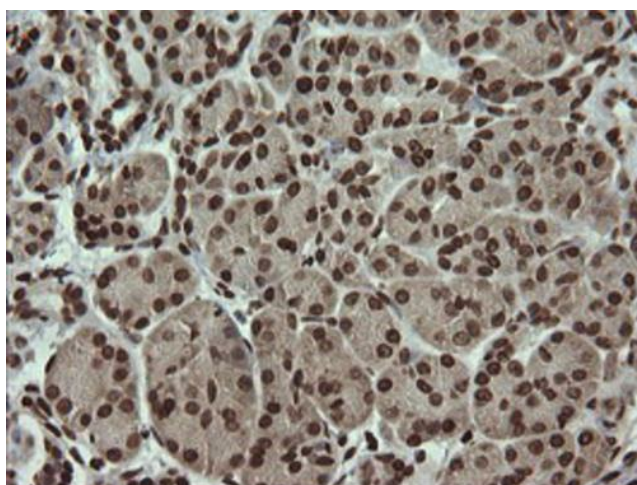


Immunohistochemical staining of paraffin-embedded Human Ovary tissue within the normal limits using anti-PCDH7 mouse monoclonal antibody. (Heat-induced epitope retrieval by 10mM citric buffer, pH6.0, 100°C for 10min, [TA505537])

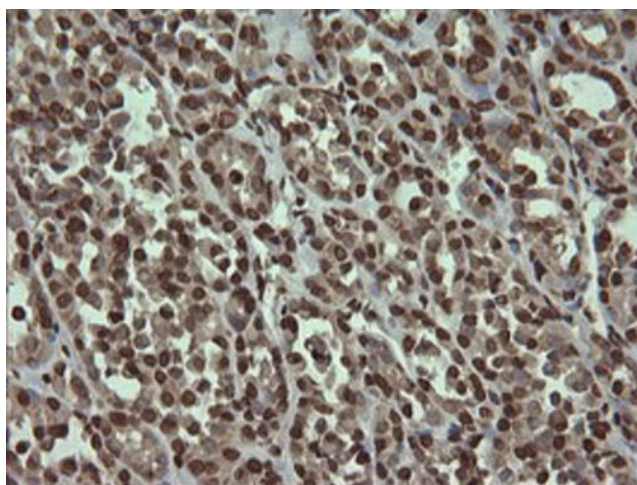




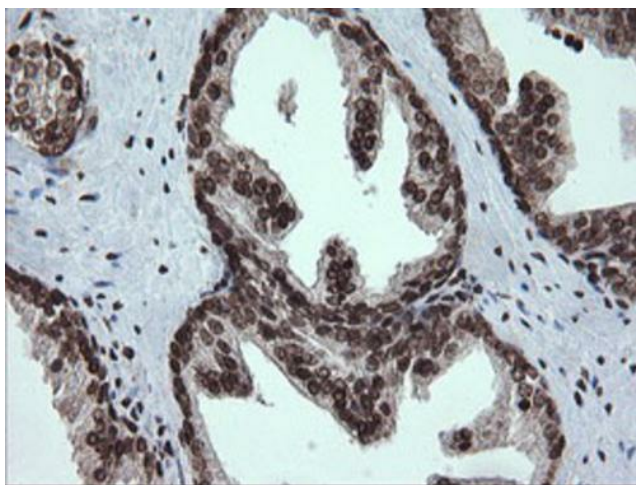
Immunohistochemical staining of paraffin-embedded Adenocarcinoma of Human ovary tissue using anti-PCDH7 mouse monoclonal antibody. (Heat-induced epitope retrieval by 10mM citric buffer, pH6.0, 100°C for 10min, [TA505537])



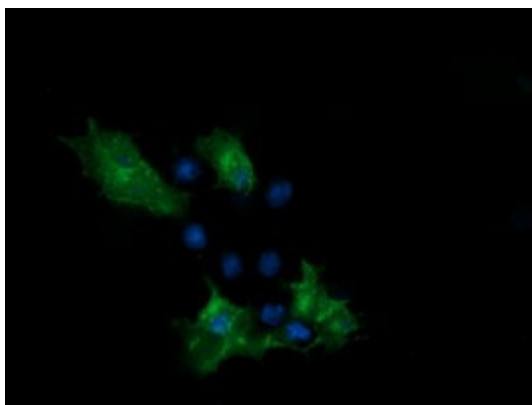
Immunohistochemical staining of paraffin-embedded Human pancreas tissue within the normal limits using anti-PCDH7 mouse monoclonal antibody. (Heat-induced epitope retrieval by 10mM citric buffer, pH6.0, 100°C for 10min, [TA505537])



Immunohistochemical staining of paraffin-embedded Carcinoma of Human thyroid tissue using anti-PCDH7 mouse monoclonal antibody. (Heat-induced epitope retrieval by 10mM citric buffer, pH6.0, 100°C for 10min, [TA505537])



Immunohistochemical staining of paraffin-embedded Human prostate tissue within the normal limits using anti-PCDH7 mouse monoclonal antibody. (Heat-induced epitope retrieval by 10mM citric buffer, pH6.0, 100°C for 10min, [TA505537])



Anti-PCDH7 mouse monoclonal antibody ([TA505537]) immunofluorescent staining of COS7 cells transiently transfected by pCMV6-ENTRY PCDH7 ([RC223033]).