

Product datasheet for **CF505452**

PCDH7 Mouse Monoclonal Antibody [Clone ID: OTI2G6]

Product data:

| | |
|-------------------------|--|
| Product Type: | Primary Antibodies |
| Clone Name: | OTI2G6 |
| Applications: | IF, IHC, WB |
| Recommended Dilution: | WB 1:200~2000, IHC 1:150, IF 1:100 |
| Reactivity: | Human, Mouse, Rat |
| Host: | Mouse |
| Isotype: | IgG1 |
| Clonality: | Monoclonal |
| Immunogen: | Full length human recombinant protein of human PCDH7(NP_115833) produced in HKE293T cell. |
| Formulation: | Lyophilized powder (original buffer 1X PBS, pH 7.3, 8% trehalose) |
| Reconstitution Method: | For reconstitution, we recommend adding 100uL distilled water to a final antibody concentration of about 1 mg/mL. To use this carrier-free antibody for conjugation experiment, we strongly recommend performing another round of desalting process. (OriGene recommends Zeba Spin Desalting Columns, 7KMWCO from Thermo Scientific) |
| Purification: | Purified from mouse ascites fluids or tissue culture supernatant by affinity chromatography (protein A/G) |
| Conjugation: | Unconjugated |
| Storage: | Store at -20°C as received. |
| Stability: | Stable for 12 months from date of receipt. |
| Predicted Protein Size: | 132.4 kDa |
| Gene Name: | protocadherin 7 |
| Database Link: | NP_115833 Entrez Gene 54216 Mouse Entrez Gene 5099 Human O60245 |



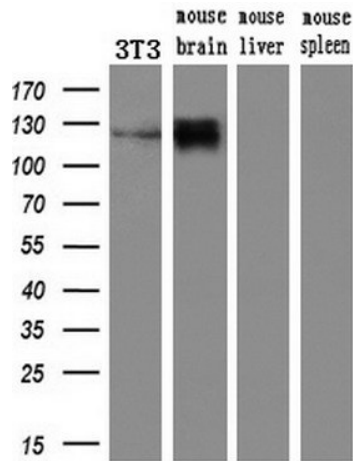
[View online »](#)

Background: This gene belongs to the protocadherin gene family, a subfamily of the cadherin superfamily. The gene encodes a protein with an extracellular domain containing 7 cadherin repeats. The gene product is an integral membrane protein that is thought to function in cell-cell recognition and adhesion. Alternative splicing yields isoforms with unique cytoplasmic tails. [provided by RefSeq, Jul 2008]

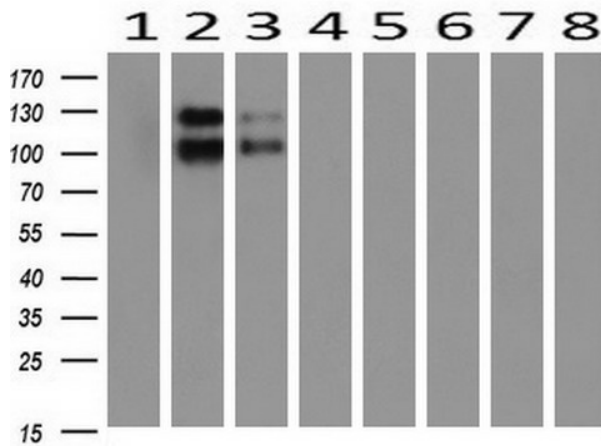
Synonyms: BH-Pcdh; BHPCDH; PPP1R120

Protein Families: Druggable Genome, Transmembrane

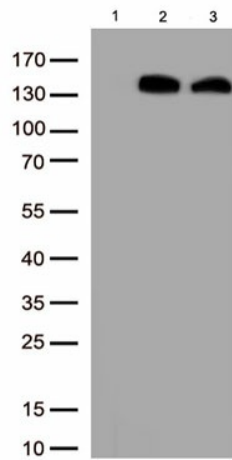
Product images:



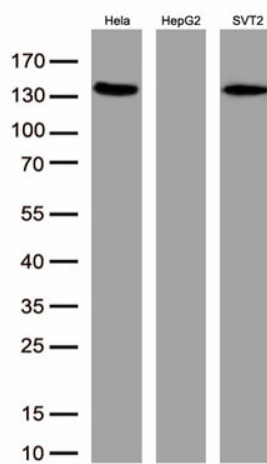
Western blot analysis of extracts (10ug) from a mouse cell line and 3 different mouse tissues by using anti-PCDH7 monoclonal antibody (1:200).



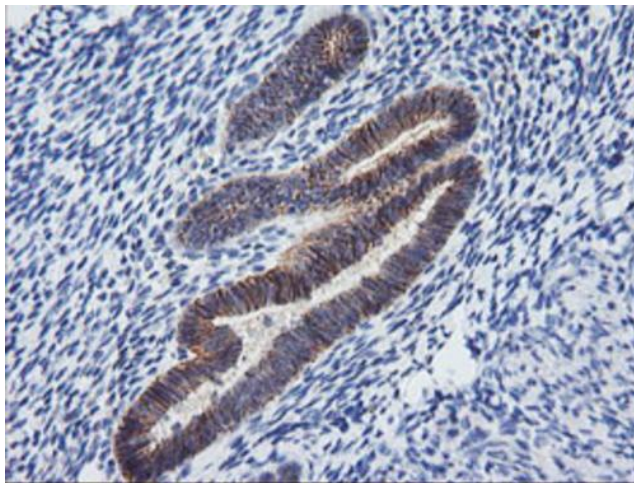
Western blot analysis of extracts (10ug) from 8 Human tissue by using anti-PCDH7 monoclonal antibody at 1:200 (1: Testis; 2: Uterus; 3: Breast; 4: Brain; 5: Liver; 6: Ovary; 7: Thyroid gland; 8: Colon).



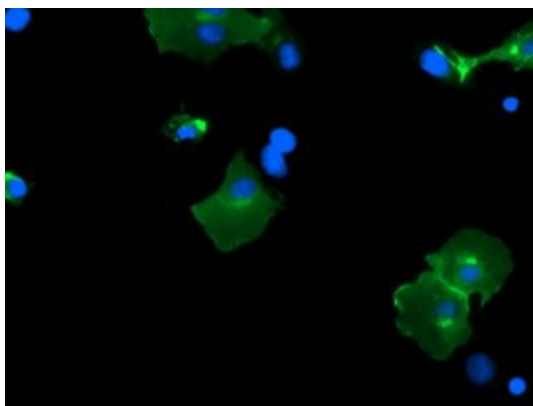
Western blot analysis of overexpressed lysates(15ug per lane) from HEK293T cells transfected with empty plasmid ([PS100001], lane 1) , human PCDH7 plasmid ([RC213200], lane 2), mouse PCDH7 plasmid ([MR214196], lane 3), , using anti-PCDH7 antibody [TA505452] (1:500).



Western blot analysis of extracts (50ug per lane) from 3 cell lines lysates by using anti-PCDH7 monoclonal antibody([TA505452], 1:500)



Immunohistochemical staining of paraffin-embedded Human endometrium tissue within the normal limits using anti-PCDH7 mouse monoclonal antibody. (Heat-induced epitope retrieval by 10mM citric buffer, pH6.0, 120°C for 3min, [TA505452])



Anti-PCDH7 mouse monoclonal antibody ([TA505452]) immunofluorescent staining of COS7 cells transiently transfected by pCMV6-ENTRY PCDH7 ([RC223033]).