

## Product datasheet for **CF505437**

### **GADD45G Mouse Monoclonal Antibody [Clone ID: OTI2F12]**

#### **Product data:**

<b>Product Type:</b>	Primary Antibodies
<b>Clone Name:</b>	OTI2F12
<b>Applications:</b>	IF, IHC, IP, WB
<b>Recommended Dilution:</b>	WB 1:4000, IHC 1:150, IF 1:100
<b>Reactivity:</b>	Human, Mouse, Rat
<b>Host:</b>	Mouse
<b>Isotype:</b>	IgG1
<b>Clonality:</b>	Monoclonal
<b>Immunogen:</b>	Full length human recombinant protein of human GADD45G(NP_006696) produced in HEK293T cell.
<b>Formulation:</b>	Lyophilized powder (original buffer 1X PBS, pH 7.3, 8% trehalose)
<b>Reconstitution Method:</b>	For reconstitution, we recommend adding 100uL distilled water to a final antibody concentration of about 1 mg/mL. To use this carrier-free antibody for conjugation experiment, we strongly recommend performing another round of desalting process. (OriGene recommends Zeba Spin Desalting Columns, 7KMWCO from Thermo Scientific)
<b>Purification:</b>	Purified from mouse ascites fluids or tissue culture supernatant by affinity chromatography (protein A/G)
<b>Conjugation:</b>	Unconjugated
<b>Storage:</b>	Store at -20°C as received.
<b>Stability:</b>	Stable for 12 months from date of receipt.
<b>Predicted Protein Size:</b>	16.9 kDa
<b>Gene Name:</b>	growth arrest and DNA damage inducible gamma
<b>Database Link:</b>	<a href="#">NP_006696</a> <a href="#">Entrez Gene 23882 Mouse</a> <a href="#">Entrez Gene 291005 Rat</a> <a href="#">Entrez Gene 10912 Human</a> <a href="#">O95257</a>



[View online »](#)

**Background:**

This gene is a member of a group of genes whose transcript levels are increased following stressful growth arrest conditions and treatment with DNA-damaging agents. The protein encoded by this gene responds to environmental stresses by mediating activation of the p38/JNK pathway via MTK1/MEKK4 kinase. The GADD45G is highly expressed in placenta. [provided by RefSeq, Jul 2008]

**Synonyms:**

CR6; DDIT2; GADD45gamma; GRP17

**Protein Pathways:**

Cell cycle, MAPK signaling pathway, p53 signaling pathway

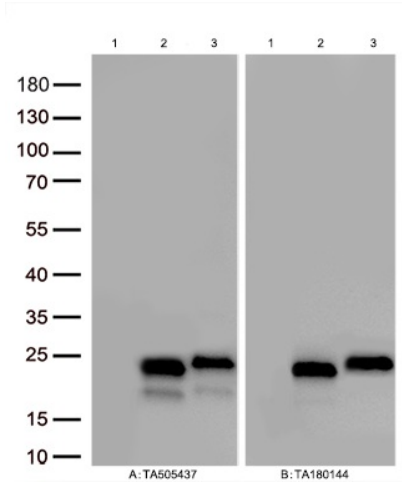
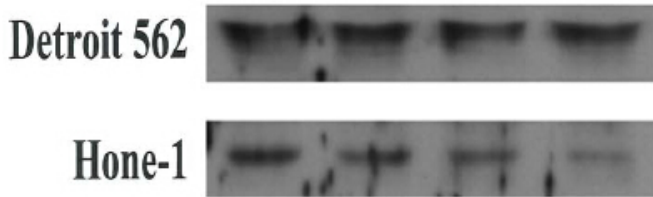
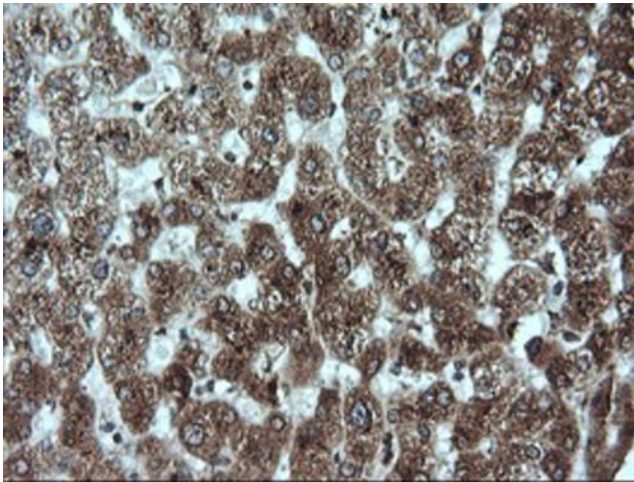
**Product images:**


Figure A, Western blot analysis of overexpressed lysates(15ug per lane) from HEK293T cells transfected with empty plasmid ([PS100001], lane 1) , human GADD45G plasmid ([RC201364], lane 2), mouse GADD45G plasmid ([MR201228], lane 3) using anti-GADD45G antibody [TA505437] (1:500). Figure B, Western blot analysis of the same samples as figure A with anti-DDK antibody ([TA180144], 1:1000)

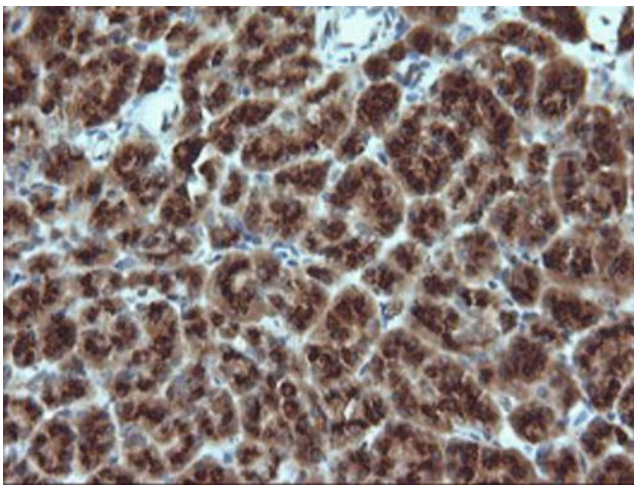


**WB:Gadd45  $\gamma$**

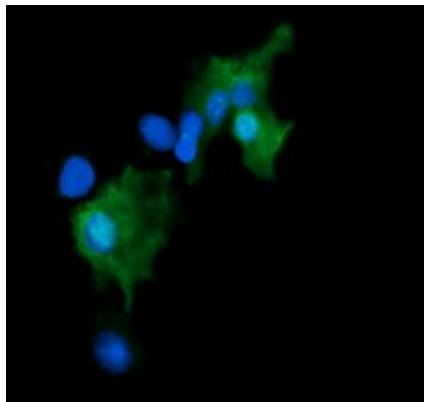
Figure from citation: Western Blot of GADD45G protein level by using anti-GADD45G antibody in human NPC cell lines. [View Citation](#)



Immunohistochemical staining of paraffin-embedded Human liver tissue within the normal limits using anti-GADD45G mouse monoclonal antibody. Heat-induced epitope retrieval by EDTA solution buffer pH 8.0 at 120°C for 3 min.



Immunohistochemical staining of paraffin-embedded Human pancreas tissue within the normal limits using anti-GADD45G mouse monoclonal antibody. Heat-induced epitope retrieval by EDTA solution buffer pH 8.0 at 120°C for 3 min.



Anti-GADD45G mouse monoclonal antibody ([TA505437]) immunofluorescent staining of COS7 cells transiently transfected by pCMV6-ENTRY GADD45G ([RC201364]).

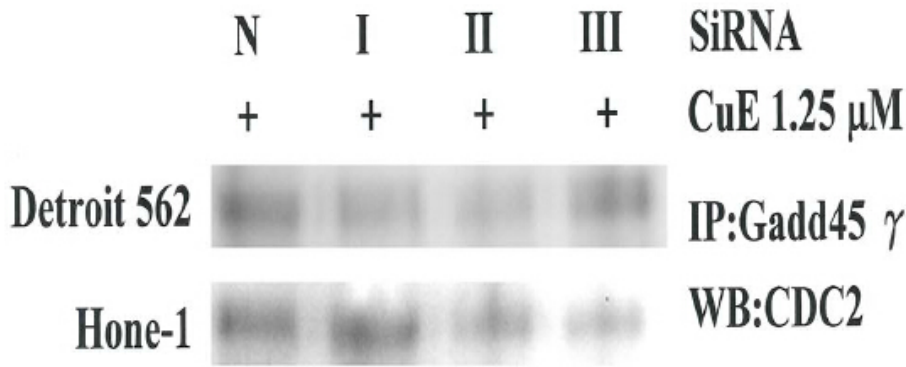


Figure from citation: Immunoprecipitation of GADD45G protein level by using anti-GADD45G antibody in human NPC cell lines. [View Citation](#)

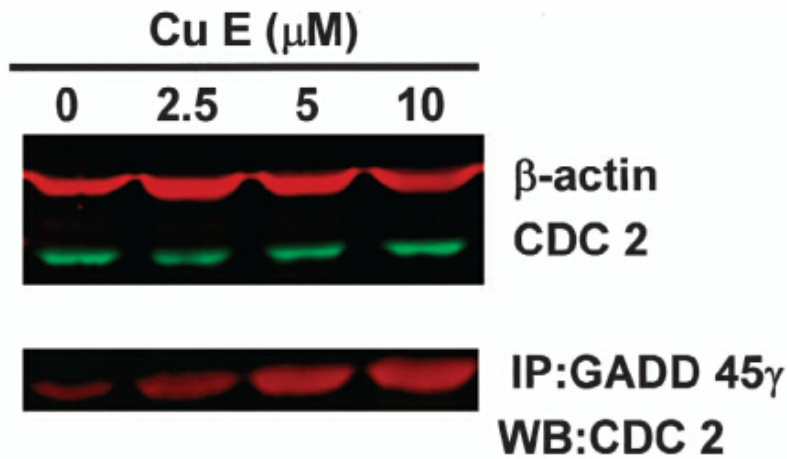


Figure from citation: Immunoprecipitation of GADD45G protein level by using anti-GADD45G antibody in human GBM8401 cells. [View Citation](#)

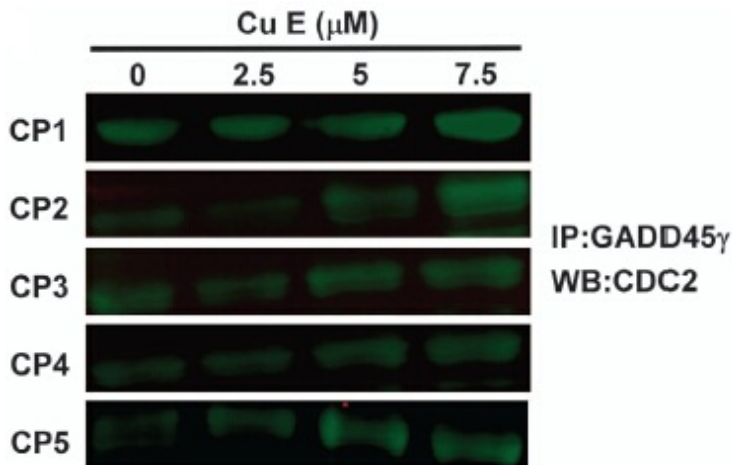


Figure from citation: Immunoprecipitation of GADD45G protein level by using anti-GADD45G antibody in human CRC cells. [View Citation](#)