

Product datasheet for **CF505434**

ETS2 Mouse Monoclonal Antibody [Clone ID: OTI3B9]

Product data:

Product Type:	Primary Antibodies
Clone Name:	OTI3B9
Applications:	WB
Recommended Dilution:	WB 1:2000
Reactivity:	Human, Mouse, Rat
Host:	Mouse
Isotype:	IgG1
Clonality:	Monoclonal
Immunogen:	Human recombinant protein fragment corresponding to amino acids 90-349 of human ETS2(NP_005230) produced in E.coli.
Formulation:	Lyophilized powder (original buffer 1X PBS, pH 7.3, 8% trehalose)
Reconstitution Method:	For reconstitution, we recommend adding 100uL distilled water to a final antibody concentration of about 1 mg/mL. To use this carrier-free antibody for conjugation experiment, we strongly recommend performing another round of desalting process. (OriGene recommends Zeba Spin Desalting Columns, 7KMWCO from Thermo Scientific)
Purification:	Purified from mouse ascites fluids or tissue culture supernatant by affinity chromatography (protein A/G)
Conjugation:	Unconjugated
Storage:	Store at -20°C as received.
Stability:	Stable for 12 months from date of receipt.
Predicted Protein Size:	52.8 kDa
Gene Name:	ETS proto-oncogene 2, transcription factor
Database Link:	NP_005230 Entrez Gene 23872 Mouse Entrez Gene 304063 Rat Entrez Gene 2114 Human P15036



[View online »](#)

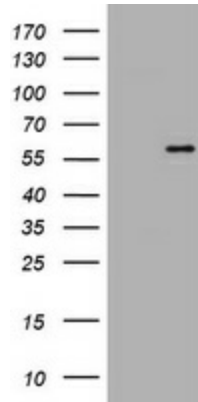
Background: This gene encodes a transcription factor which regulates genes involved in development and apoptosis. The encoded protein is also a protooncogene and shown to be involved in regulation of telomerase. A pseudogene of this gene is located on the X chromosome. Alternative splicing results in multiple transcript variants. [provided by RefSeq, Jan 2012]

Synonyms: ETS2IT1

Protein Families: Druggable Genome, Transcription Factors

Protein Pathways: Dorso-ventral axis formation

Product images:



HEK293T cells were transfected with the pCMV6-ENTRY control (Left lane) or pCMV6-ENTRY ETS2 ([RC207377], Right lane) cDNA for 48 hrs and lysed. Equivalent amounts of cell lysates (5 ug per lane) were separated by SDS-PAGE and immunoblotted with anti-ETS2. Positive lysates [LY401607] (100ug) and [LC401607] (20ug) can be purchased separately from OriGene.