

## Product datasheet for **CF505410**

### **CMPK1 Mouse Monoclonal Antibody [Clone ID: OT11D7]**

#### **Product data:**

<b>Product Type:</b>	Primary Antibodies
<b>Clone Name:</b>	OT11D7
<b>Applications:</b>	IF, IHC, WB
<b>Recommended Dilution:</b>	WB 1:2000, IHC 1:150, IF 1:100
<b>Reactivity:</b>	Human, Mouse, Rat
<b>Host:</b>	Mouse
<b>Isotype:</b>	IgG2a
<b>Clonality:</b>	Monoclonal
<b>Immunogen:</b>	Full length human recombinant protein of human CMPK1(NP_057392) produced in HEK293T cell.
<b>Formulation:</b>	Lyophilized powder (original buffer 1X PBS, pH 7.3, 8% trehalose)
<b>Reconstitution Method:</b>	For reconstitution, we recommend adding 100uL distilled water to a final antibody concentration of about 1 mg/mL. To use this carrier-free antibody for conjugation experiment, we strongly recommend performing another round of desalting process. (OriGene recommends Zeba Spin Desalting Columns, 7KMWCO from Thermo Scientific)
<b>Purification:</b>	Purified from mouse ascites fluids or tissue culture supernatant by affinity chromatography (protein A/G)
<b>Conjugation:</b>	Unconjugated
<b>Storage:</b>	Store at -20°C as received.
<b>Stability:</b>	Stable for 12 months from date of receipt.
<b>Predicted Protein Size:</b>	25.7 kDa
<b>Gene Name:</b>	cytidine/uridine monophosphate kinase 1
<b>Database Link:</b>	<a href="#">NP_057392</a> <a href="#">Entrez Gene 66588 Mouse</a> <a href="#">Entrez Gene 298410 Rat</a> <a href="#">Entrez Gene 51727 Human</a> <a href="#">P30085</a>



[View online »](#)

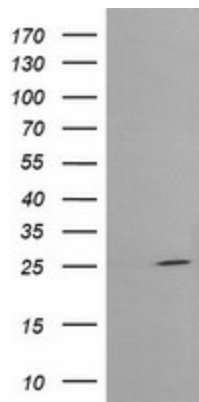
**Background:** This gene encodes one of the enzymes required for cellular nucleic acid biosynthesis. This enzyme catalyzes the transfer of a phosphate group from ATP to CMP, UMP, or dCMP, to form the corresponding diphosphate nucleotide. Alternate splicing results in both coding and non-coding transcript variants. [provided by RefSeq, Feb 2012]

**Synonyms:** CK; CMK; CMPK; UMK; UMP-CMPK; UMPK

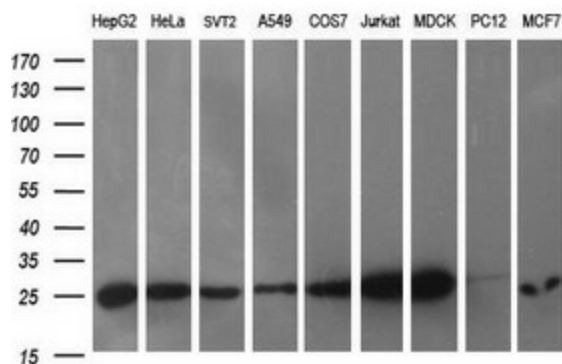
**Protein Families:** Druggable Genome

**Protein Pathways:** Metabolic pathways, Pyrimidine metabolism

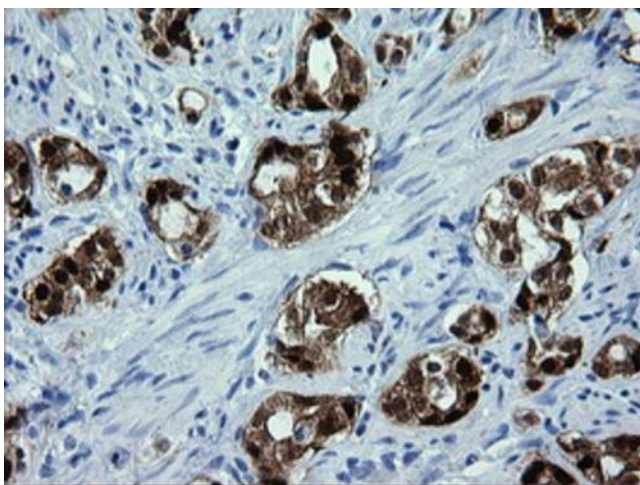
**Product images:**



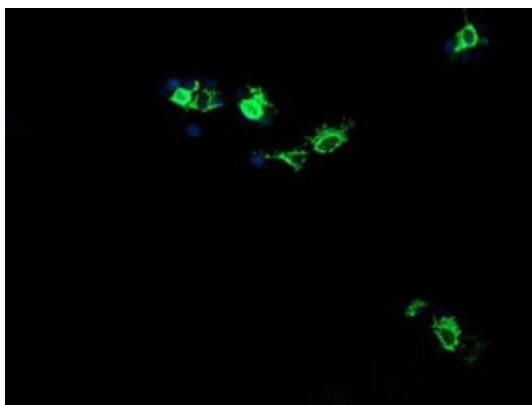
HEK293T cells were transfected with the pCMV6-ENTRY control (Left lane) or pCMV6-ENTRY CMPK1 ([RC204856], Right lane) cDNA for 48 hrs and lysed. Equivalent amounts of cell lysates (5 ug per lane) were separated by SDS-PAGE and immunoblotted with anti-CMPK1. Positive lysates [LY402539] (100ug) and [LC402539] (20ug) can be purchased separately from OriGene.



Western blot analysis of extracts (35ug) from 9 different cell lines by using anti-CMPK1 monoclonal antibody (HepG2: human; HeLa: human; SVT2: mouse; A549: human; COS7: rat; Jurkat: human; MDCK: canine; PC12: rat; MCF7: human).



Immunohistochemical staining of paraffin-embedded Carcinoma of Human prostate tissue using anti-CMPK1 mouse monoclonal antibody. Heat-induced epitope retrieval by EDTA solution buffer pH 8.0 at 120°C for 3 min.



Anti-CMPK1 mouse monoclonal antibody (TA505410) immunofluorescent staining of COS7 cells transiently transfected by pCMV6-ENTRY CMPK1 (RC204856).