

## Product datasheet for **CF505382**

### **EGR2 Mouse Monoclonal Antibody [Clone ID: OTI1B12]**

#### **Product data:**

<b>Product Type:</b>	Primary Antibodies
<b>Clone Name:</b>	OTI1B12
<b>Applications:</b>	IF, IHC, WB
<b>Recommended Dilution:</b>	WB: 1:500, IHC: 1:150, IF: 1:50-1:100
<b>Reactivity:</b>	Human, Mouse, Rat
<b>Host:</b>	Mouse
<b>Isotype:</b>	IgG1
<b>Clonality:</b>	Monoclonal
<b>Immunogen:</b>	Human recombinant protein fragment corresponding to amino acids 156-476 of human EGR2(NP_000390) produced in E.coli.
<b>Formulation:</b>	Lyophilized powder (original buffer 1X PBS, pH 7.3, 8% trehalose)
<b>Reconstitution Method:</b>	For reconstitution, we recommend adding 100uL distilled water to a final antibody concentration of about 1 mg/mL. To use this carrier-free antibody for conjugation experiment, we strongly recommend performing another round of desalting process. (OriGene recommends Zeba Spin Desalting Columns, 7KMWCO from Thermo Scientific)
<b>Purification:</b>	Purified from mouse ascites fluids or tissue culture supernatant by affinity chromatography (protein A/G)
<b>Conjugation:</b>	Unconjugated
<b>Storage:</b>	Store at -20°C as received.
<b>Stability:</b>	Stable for 12 months from date of receipt.
<b>Predicted Protein Size:</b>	50.1 kDa
<b>Gene Name:</b>	early growth response 2
<b>Database Link:</b>	<a href="#">NP_000390</a> <a href="#">Entrez Gene 13654 Mouse</a> <a href="#">Entrez Gene 114090 Rat</a> <a href="#">Entrez Gene 1959 Human</a> <a href="#">P11161</a>



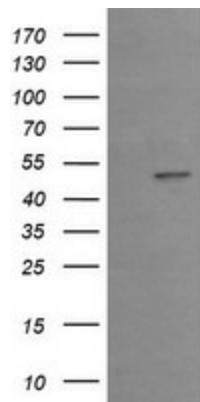
[View online »](#)

**Background:** The protein encoded by this gene is a transcription factor with three tandem C2H2-type zinc fingers. Defects in this gene are associated with Charcot-Marie-Tooth disease type 1D (CMT1D), Charcot-Marie-Tooth disease type 4E (CMT4E), and with Dejerine-Sottas syndrome (DSS). Multiple transcript variants encoding two different isoforms have been found for this gene. [provided by RefSeq, Oct 2008]

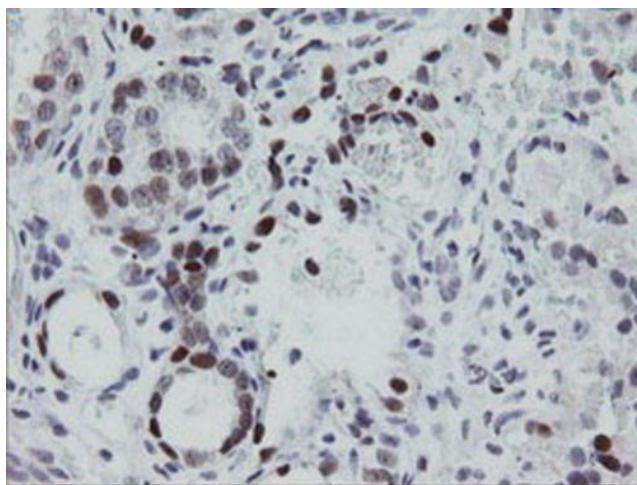
**Synonyms:** AT591; CMT1D; CMT4E; KROX20

**Protein Families:** Druggable Genome, Transcription Factors

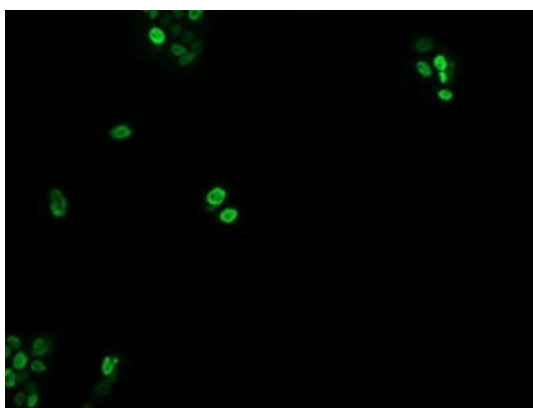
### Product images:



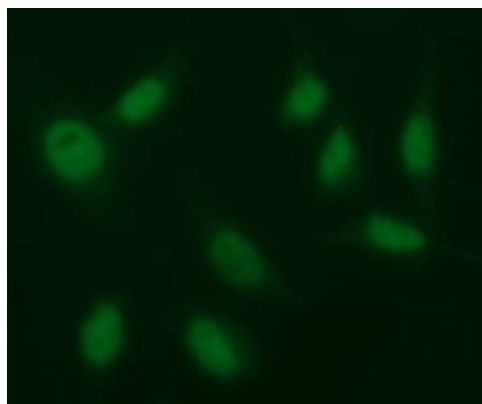
HEK293T cells were transfected with the pCMV6-ENTRY control (Cat# [PS100001], Left lane) or pCMV6-ENTRY EGR2 (Cat# [RC212183], Right lane) cDNA for 48 hrs and lysed. Equivalent amounts of cell lysates (5 ug per lane) were separated by SDS-PAGE and immunoblotted with anti-EGR2 (Cat# [TA505382]). Positive lysates [LY424742] (100ug) and [LC424742] (20ug) can be purchased separately from OriGene.



Immunohistochemical staining of paraffin-embedded Adenocarcinoma of Human ovary tissue using anti-EGR2 mouse monoclonal antibody. Heat-induced epitope retrieval by EDTA solution buffer pH 8.0 at 120°C for 3 min.



Anti-EGR2 mouse monoclonal antibody ([TA505382]) immunofluorescent staining of COS7 cells transiently transfected by pCMV6-ENTRY EGR2 ([RC212183]).



Immunofluorescent staining of HeLa cells using anti-EGR2 mouse monoclonal antibody ([TA505382]) at 1:100 (1:100)