

Product datasheet for **CF505361**

MAGEA4 Mouse Monoclonal Antibody [Clone ID: OTI2C1]

Product data:

Product Type:	Primary Antibodies
Clone Name:	OTI2C1
Applications:	IF, IHC, WB
Recommended Dilution:	WB 1:500, IHC 1:150, IF 1:100
Reactivity:	Human
Host:	Mouse
Isotype:	IgG1
Clonality:	Monoclonal
Immunogen:	Full length human recombinant protein of human MAGEA4(NP_001011550) produced in HEK293T cell.
Formulation:	Lyophilized powder (original buffer 1X PBS, pH 7.3, 8% trehalose)
Reconstitution Method:	For reconstitution, we recommend adding 100uL distilled water to a final antibody concentration of about 1 mg/mL. To use this carrier-free antibody for conjugation experiment, we strongly recommend performing another round of desalting process. (OriGene recommends Zeba Spin Desalting Columns, 7KMWCO from Thermo Scientific)
Purification:	Purified from mouse ascites fluids or tissue culture supernatant by affinity chromatography (protein A/G)
Conjugation:	Unconjugated
Storage:	Store at -20°C as received.
Stability:	Stable for 12 months from date of receipt.
Predicted Protein Size:	34.7 kDa
Gene Name:	MAGE family member A4
Database Link:	NP_001011550 Entrez Gene 4103 Human P43358

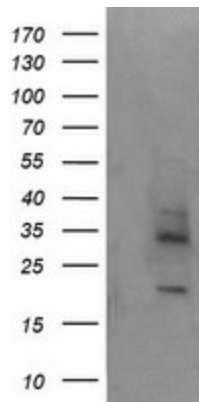
[View online »](#)

Background:

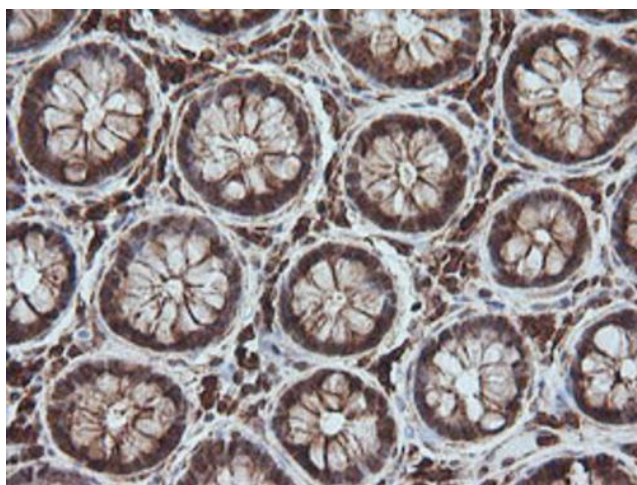
This gene is a member of the MAGEA gene family. The members of this family encode proteins with 50 to 80% sequence identity to each other. The promoters and first exons of the MAGEA genes show considerable variability, suggesting that the existence of this gene family enables the same function to be expressed under different transcriptional controls. The MAGEA genes are clustered at chromosomal location Xq28. They have been implicated in some hereditary disorders, such as dyskeratosis congenita. At least four variants encoding the same protein have been found for this gene. [provided by RefSeq]

Synonyms:

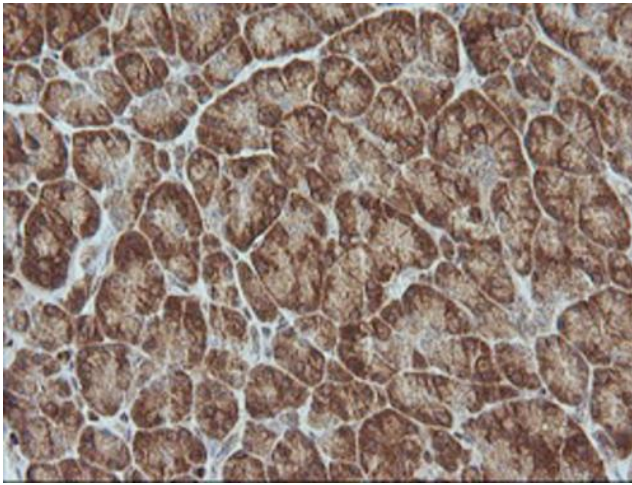
CT1.4; MAGE-41; MAGE-X2; MAGE4; MAGE4A; MAGE4B

Product images:


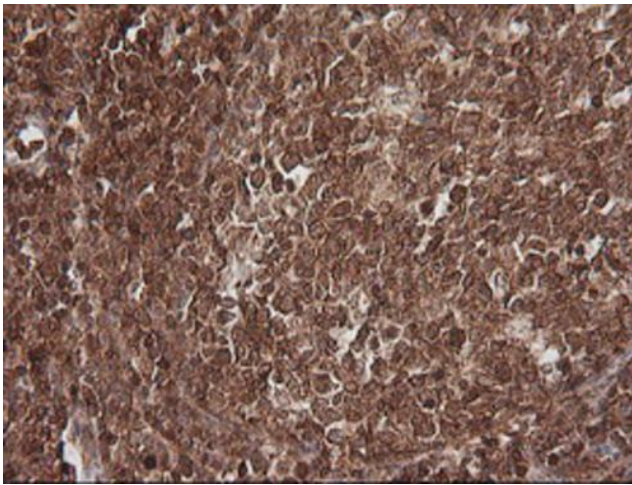
HEK293T cells were transfected with the pCMV6-ENTRY control (Left lane) or pCMV6-ENTRY MAGEA4 ([RC223991], Right lane) cDNA for 48 hrs and lysed. Equivalent amounts of cell lysates (5 ug per lane) were separated by SDS-PAGE and immunoblotted with anti-MAGEA4. Positive lysates [LY423276] (100ug) and [LC423276] (20ug) can be purchased separately from OriGene.



Immunohistochemical staining of paraffin-embedded Human colon tissue within the normal limits using anti-MAGEA4 mouse monoclonal antibody. Heat-induced epitope retrieval by EDTA solution buffer pH 8.0 at 120°C for 3 min.



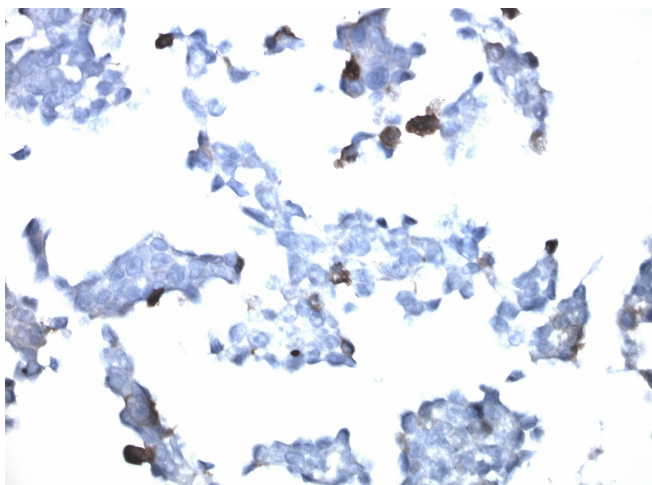
Immunohistochemical staining of paraffin-embedded Human pancreas tissue within the normal limits using anti-MAGEA4 mouse monoclonal antibody. Heat-induced epitope retrieval by EDTA solution buffer pH 8.0 at 120°C for 3 min.



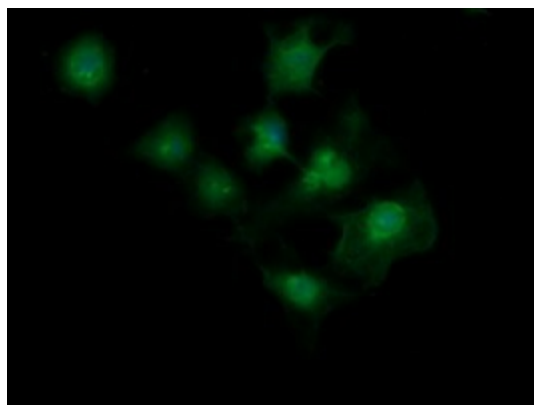
Immunohistochemical staining of paraffin-embedded Human lymph node tissue within the normal limits using anti-MAGEA4 mouse monoclonal antibody. Heat-induced epitope retrieval by EDTA solution buffer pH 8.0 at 120°C for 3 min.



Immunohistochemical staining of paraffin-embedded Human lymphoma tissue using anti-MAGEA4 mouse monoclonal antibody. Heat-induced epitope retrieval by EDTA solution buffer pH 8.0 at 120°C for 3 min.



Immunohistochemical staining of paraffin-embedded untransfected MAGEA4 CytoSections (TS418952P5) using anti-MAGEA4 antibody [TA505361] clone OTI2C1 mouse monoclonal antibody. HIER Citrate buffer pH6 ([B05C-100B]) at 110C for 10 min, anti-MAGEA4 was diluted to 1:1000. Detection was done with Polink1 Broad Mouse and Rabbit C/N [D11-18] with DAB Kit. Image 40x magnification.



Anti-MAGEA4 mouse monoclonal antibody ([TA505361]) immunofluorescent staining of COS7 cells transiently transfected by pCMV6-ENTRY MAGEA4 ([RC223991]).