

Product datasheet for **CF505346**

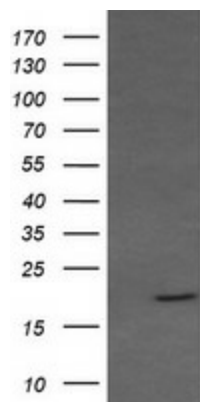
RAB30 Mouse Monoclonal Antibody [Clone ID: OTI1D3]

Product data:

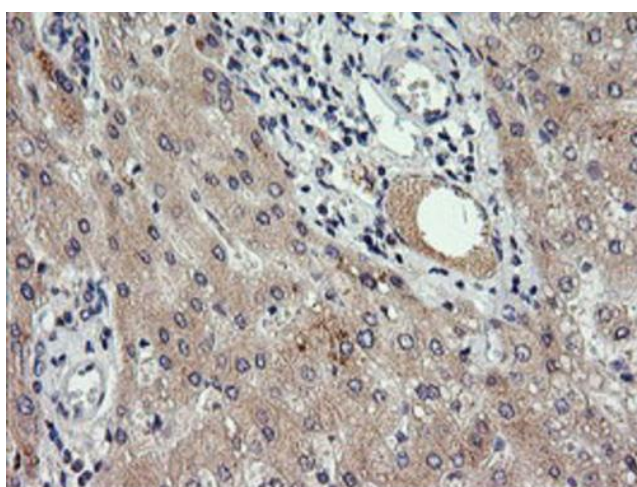
Product Type:	Primary Antibodies
Clone Name:	OTI1D3
Applications:	IF, IHC, WB
Recommended Dilution:	WB 1:2000, IHC 1:150, IF 1:100
Reactivity:	Human, Mouse, Rat
Host:	Mouse
Isotype:	IgG2a
Clonality:	Monoclonal
Immunogen:	Full length human recombinant protein of human RAB30(NP_055303) produced in HEK293T cell.
Formulation:	Lyophilized powder (original buffer 1X PBS, pH 7.3, 8% trehalose)
Reconstitution Method:	For reconstitution, we recommend adding 100uL distilled water to a final antibody concentration of about 1 mg/mL. To use this carrier-free antibody for conjugation experiment, we strongly recommend performing another round of desalting process. (OriGene recommends Zeba Spin Desalting Columns, 7KMWCO from Thermo Scientific)
Purification:	Purified from mouse ascites fluids or tissue culture supernatant by affinity chromatography (protein A/G)
Conjugation:	Unconjugated
Storage:	Store at -20°C as received.
Stability:	Stable for 12 months from date of receipt.
Predicted Protein Size:	22.9 kDa
Gene Name:	RAB30, member RAS oncogene family
Database Link:	NP_055303 Entrez Gene 75985 Mouse Entrez Gene 308821 Rat Entrez Gene 27314 Human Q15771
Synonyms:	member RAS oncogene family; RAB30
Protein Families:	Druggable Genome



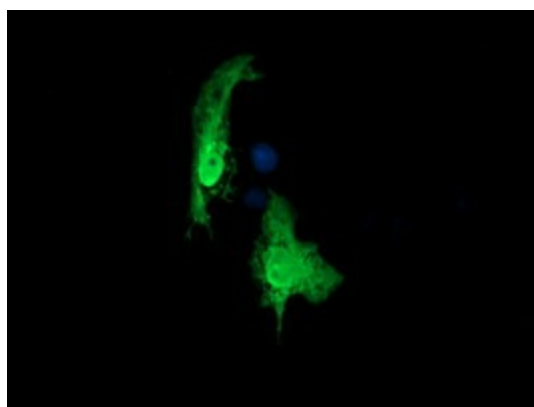
[View online »](#)

Product images:

HEK293T cells were transfected with the pCMV6-ENTRY control (Left lane) or pCMV6-ENTRY RAB30 ([RC204318], Right lane) cDNA for 48 hrs and lysed. Equivalent amounts of cell lysates (5 ug per lane) were separated by SDS-PAGE and immunoblotted with anti-RAB30. Positive lysates [LY415246] (100ug) and [LC415246] (20ug) can be purchased separately from OriGene.



Immunohistochemical staining of paraffin-embedded Human liver tissue within the normal limits using anti-RAB30 mouse monoclonal antibody. (Heat-induced epitope retrieval by 10mM citric buffer, pH6.0, 120°C for 3min, [TA505346])



Anti-RAB30 mouse monoclonal antibody ([TA505346]) immunofluorescent staining of COS7 cells transiently transfected by pCMV6-ENTRY RAB30 ([RC204318]).