

## Product datasheet for **CF505333**

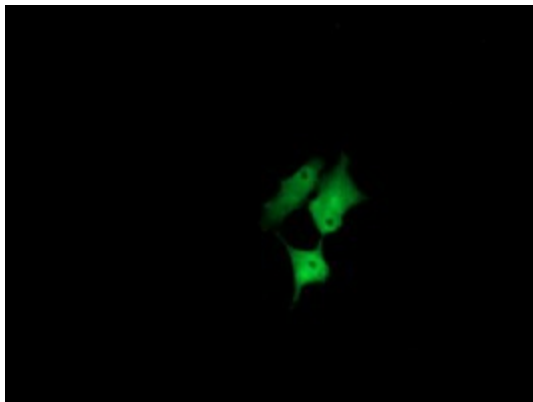
### **CESK1 (CCT8L2) Mouse Monoclonal Antibody [Clone ID: OTI4A4]**

#### **Product data:**

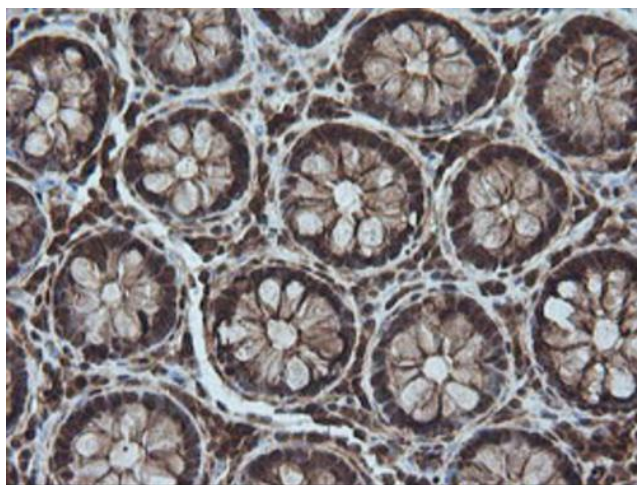
<b>Product Type:</b>	Primary Antibodies
<b>Clone Name:</b>	OTI4A4
<b>Applications:</b>	IF, IHC, WB
<b>Recommended Dilution:</b>	WB 1:250~1000, IHC 1:150, IF 1:100
<b>Reactivity:</b>	Human
<b>Host:</b>	Mouse
<b>Isotype:</b>	IgG1
<b>Clonality:</b>	Monoclonal
<b>Immunogen:</b>	Full length human recombinant protein of human CCT8L2(NP_055221) produced in HEK293T cell.
<b>Formulation:</b>	Lyophilized powder (original buffer 1X PBS, pH 7.3, 8% trehalose)
<b>Reconstitution Method:</b>	For reconstitution, we recommend adding 100uL distilled water to a final antibody concentration of about 1 mg/mL. To use this carrier-free antibody for conjugation experiment, we strongly recommend performing another round of desalting process. (OriGene recommends Zeba Spin Desalting Columns, 7KMWCO from Thermo Scientific)
<b>Purification:</b>	Purified from mouse ascites fluids or tissue culture supernatant by affinity chromatography (protein A/G)
<b>Conjugation:</b>	Unconjugated
<b>Storage:</b>	Store at -20°C as received.
<b>Stability:</b>	Stable for 12 months from date of receipt.
<b>Predicted Protein Size:</b>	59.2 kDa
<b>Gene Name:</b>	chaperonin containing TCP1 subunit 8 like 2
<b>Database Link:</b>	<a href="#">NP_055221</a> <a href="#">Entrez Gene 150160 Human</a> <a href="#">Q96SF2</a>
<b>Synonyms:</b>	CESK1



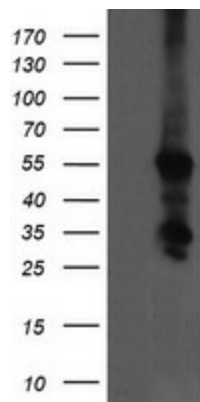
[View online »](#)

**Product images:**

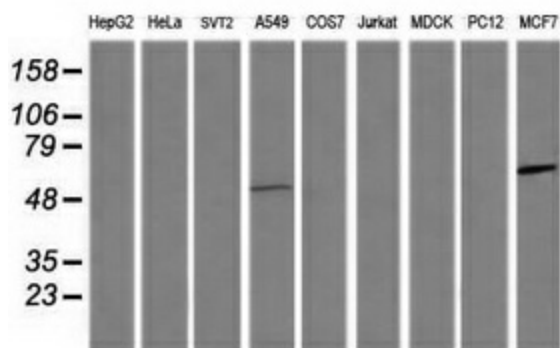
Anti-CCT8L2 mouse monoclonal antibody ([TA505333]) immunofluorescent staining of COS7 cells transiently transfected by pCMV6-ENTRY CCT8L2 ([RC207536]).



Immunohistochemical staining of paraffin-embedded Human colon tissue within the normal limits using anti-CCT8L2 mouse monoclonal antibody. Heat-induced epitope retrieval by EDTA solution buffer pH 8.0 at 120°C for 3 min.



HEK293T cells were transfected with the pCMV6-ENTRY control (Left lane) or pCMV6-ENTRY CCT8L2 ([RC207536], Right lane) cDNA for 48 hrs and lysed. Equivalent amounts of cell lysates (5 ug per lane) were separated by SDS-PAGE and immunoblotted with anti-CCT8L2. Positive lysates [LY415299] (100ug) and [LC415299] (20ug) can be purchased separately from OriGene.



Western blot analysis of extracts (35ug) from 9 different cell lines by using anti-CCT8L2 monoclonal antibody (HepG2: human; HeLa: human; SVT2: mouse; A549: human; COS7: monkey; Jurkat: human; MDCK: canine; PC12: rat; MCF7: human).