

## Product datasheet for **CF505321**

### DEF6 Mouse Monoclonal Antibody [Clone ID: OTI1E3]

#### Product data:

Product Type:	Primary Antibodies
Clone Name:	OTI1E3
Applications:	IF, IHC, WB
Recommended Dilution:	WB 1:500~2000, IHC 1:150, IF 1:100
Reactivity:	Human, Dog, Rat, Monkey, Mouse
Host:	Mouse
Isotype:	IgG1
Clonality:	Monoclonal
Immunogen:	Full length human recombinant protein of human DEF6(NP_071330) produced in HEK293T cell.
Formulation:	Lyophilized powder (original buffer 1X PBS, pH 7.3, 8% trehalose)
Reconstitution Method:	For reconstitution, we recommend adding 100uL distilled water to a final antibody concentration of about 1 mg/mL. To use this carrier-free antibody for conjugation experiment, we strongly recommend performing another round of desalting process. (OriGene recommends Zeba Spin Desalting Columns, 7KMWCO from Thermo Scientific)
Purification:	Purified from mouse ascites fluids or tissue culture supernatant by affinity chromatography (protein A/G)
Conjugation:	Unconjugated
Storage:	Store at -20°C as received.
Stability:	Stable for 12 months from date of receipt.
Predicted Protein Size:	73.7 kDa
Gene Name:	DEF6 guanine nucleotide exchange factor
Database Link:	<a href="#">NP_071330</a> <a href="#">Entrez Gene 23853 Mouse</a> <a href="#">Entrez Gene 309642 Rat</a> <a href="#">Entrez Gene 608163 Dog</a> <a href="#">Entrez Gene 718845 Monkey</a> <a href="#">Entrez Gene 50619 Human</a> <a href="#">Q9H4E7</a>



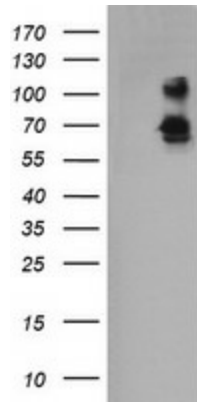
[View online »](#)

**Background:** DEF6, or IBP, is a guanine nucleotide exchange factor (GEF) for RAC (MIM 602048) and CDC42 (MIM 116952) that is highly expressed in B and T cells (Gupta et al., 2003 [PubMed 12923183]). [supplied by OMIM]

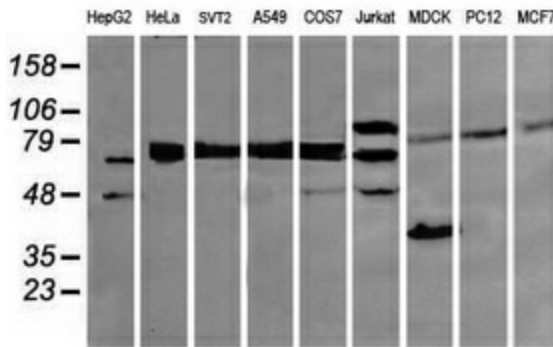
**Synonyms:** IBP; SLAT; SWAP70L

**Protein Families:** Druggable Genome

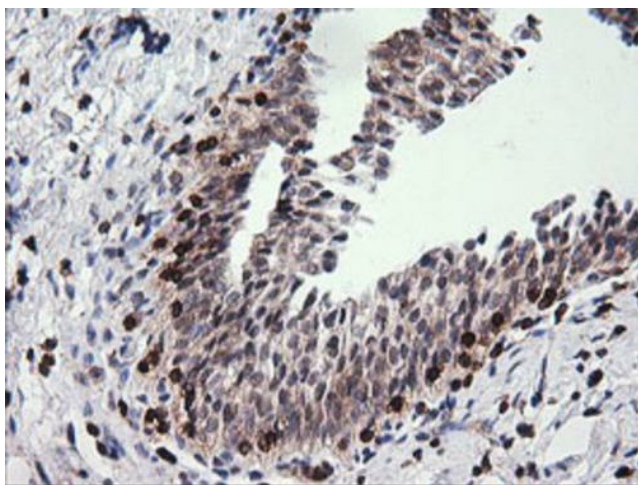
**Product images:**



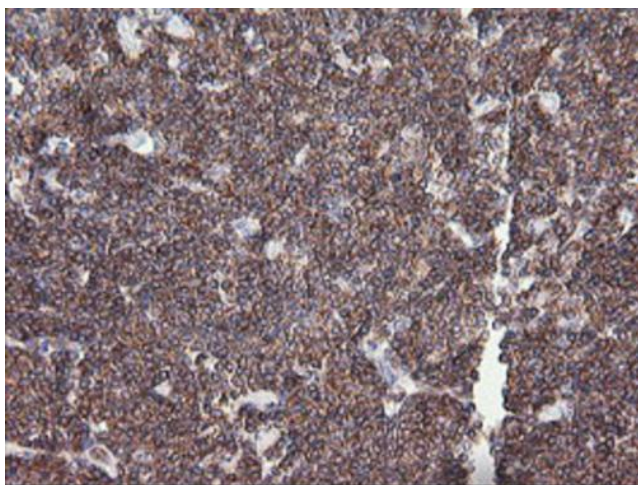
HEK293T cells were transfected with the pCMV6-ENTRY control (Left lane) or pCMV6-ENTRY DEF6 [RC217877], Right lane) cDNA for 48 hrs and lysed. Equivalent amounts of cell lysates (5 ug per lane) were separated by SDS-PAGE and immunoblotted with anti-DEF6. Positive lysates [LY411815] (100ug) and [LC411815] (20ug) can be purchased separately from OriGene.



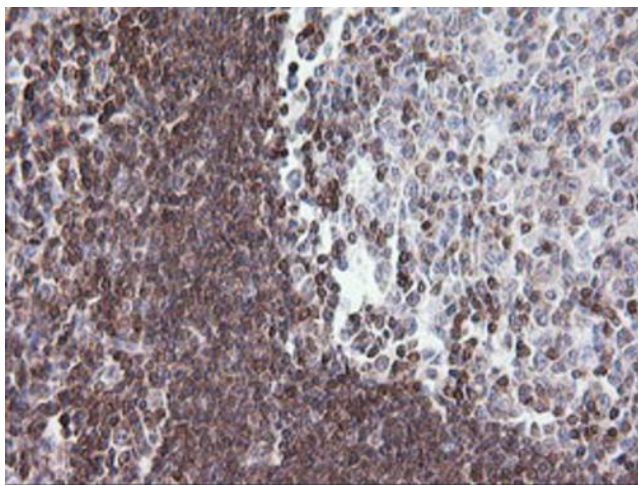
Western blot analysis of extracts (35ug) from 9 different cell lines by using anti-DEF6 monoclonal antibody (HepG2: human; HeLa: human; SVT2: mouse; A549: human; COS7: monkey; Jurkat: human; MDCK: canine; PC12: rat; MCF7: human).



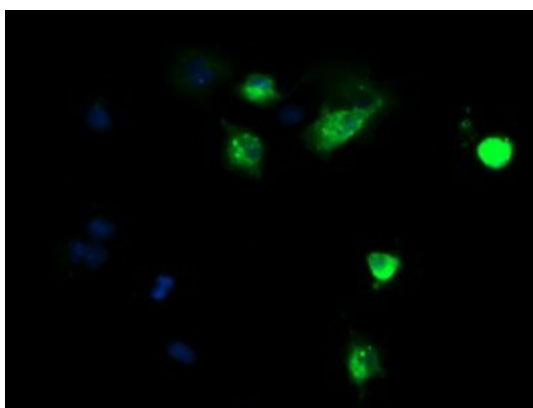
Immunohistochemical staining of paraffin-embedded Human bladder tissue within the normal limits using anti-DEF6 mouse monoclonal antibody. Heat-induced epitope retrieval by EDTA solution buffer pH 8.0 at 120°C for 3 min.



Immunohistochemical staining of paraffin-embedded Human lymphoma tissue using anti-DEF6 mouse monoclonal antibody. Heat-induced epitope retrieval by EDTA solution buffer pH 8.0 at 120°C for 3 min.



Immunohistochemical staining of paraffin-embedded Human tonsil within the normal limits using anti-DEF6 mouse monoclonal antibody. Heat-induced epitope retrieval by EDTA solution buffer pH 8.0 at 120°C for 3 min.



Anti-DEF6 mouse monoclonal antibody ([TA505321]) immunofluorescent staining of COS7 cells transiently transfected by pCMV6-ENTRY DEF6 ([RC217877]).